

Cecil County Community Health Advisory Committee Meeting July 20, 2023

Daniel Coulter, MPH
Director of Health Planning
Cecil County Health Department



Agenda

- Welcome and Introductions
- Workforce and Health Discussion
- Healthy Babies Equity Act
- Health Equity Assessment Findings
- Task Force Updates
- Community Updates & Public Comment



Workforce and Health Discussion



Healthy Babies Equity Act

Healthy Babies Equity Act

- Expands Medicaid coverage to noncitizen pregnant individuals in Maryland of any immigration status beginning July 1, 2023.
- Provides coverage during pregnancy and for 4 months after the baby is born.
- Up to 3 months of retroactive coverage before the individual's coverage start date is available.

Eligibility

- Individuals may qualify for this coverage if they meet the following criteria:
 - Noncitizen (e.g., undocumented) who does not qualify for Medicaid solely due to immigration status;
 - Maryland resident;
 - Currently or recently pregnant;
 - Income up to 250% federal poverty level (FPL).

Applying for Coverage

- In-person at the Cecil County Health Department
- By calling (410) 996-5126 or 1-855-642-8572
- Online at:
<https://www.marylandhealthconnection.gov>
- For more information, visit:
<https://health.maryland.gov/mmcp/medicaid-mch-initiatives/Pages/healthybabies.aspx>



Health Equity Assessment

What is Health Equity?

- Health equity is the state in which everyone has a fair and just opportunity to attain their highest level of health.
- CDC



Factors Affecting Health Equity

- Social and Community Context
- Healthcare Access & Use
- Neighborhood & Physical Environment
- Workplace Conditions
- Education
- Income & Wealth Gaps

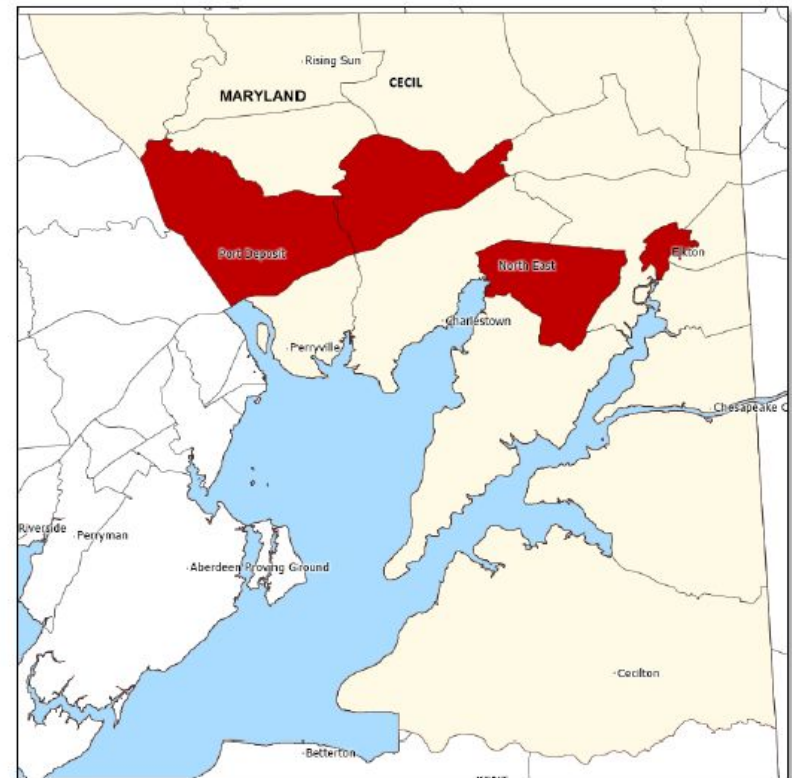
Social Vulnerability

- Social vulnerability refers to the potential negative effects on communities caused by external stresses on human health.
- The CDC's Social Vulnerability Index measures 15 variables in 4 themes, including:
 - Socioeconomic status;
 - Household composition;
 - Race, ethnicity, and language; and
 - Housing and transportation.

Socioeconomic Status Index

- Census tracts with the highest levels of socioeconomic vulnerability are located in Port Deposit, North East, and Elkton.

Exhibit 22: Socioeconomic Status Index – Bottom Quartile Census Tracts

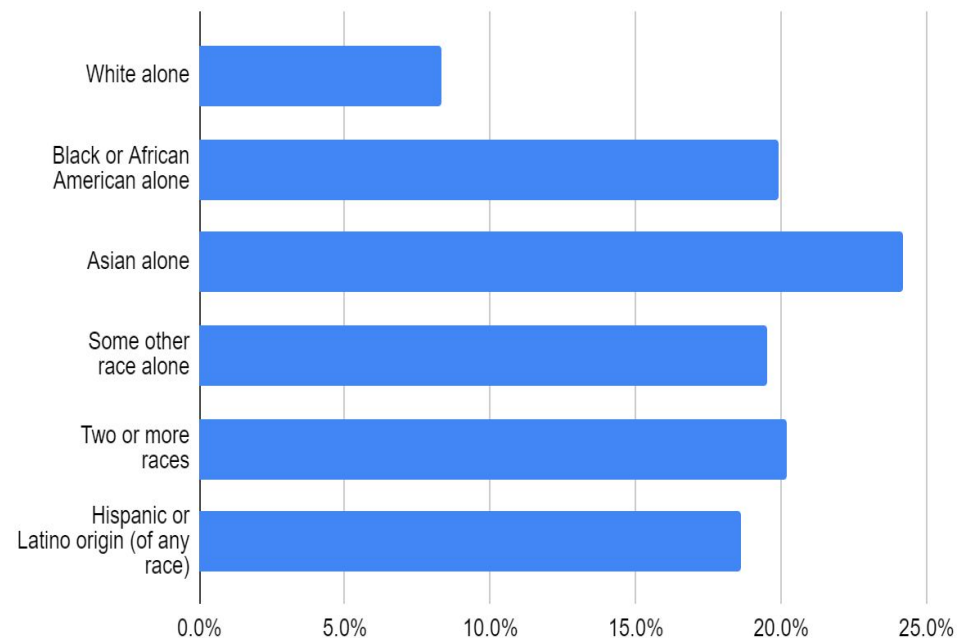


Source: Centers for Disease Control and Prevention, 2018, and Caliper Maptitude, 2021.

Poverty

- Minority racial and ethnic groups have a higher burden of poverty in Cecil County.
- In 2019, low-income census tracts were located in Elkton, North East, and Port Deposit.

Poverty Status in the Last 12 Months



Educational Attainment

- Among the three largest racial and ethnic groups in the county, those identifying as White are more likely to have graduated high school (91.4%) than those identifying as Black (87.7%) or Hispanic or Latino Origin (75.2%).
- Residents who did not graduate high school have higher rates of poverty (21.2%) than high school graduates (11.2%) and those with at least a Bachelor's degree (5.2%).

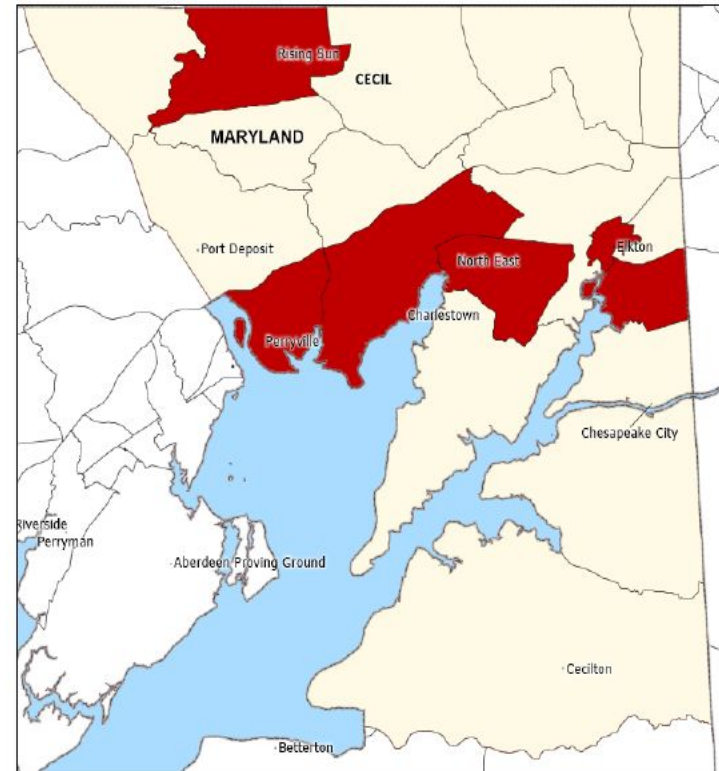
Health Insurance

- Among the three largest racial and ethnic groups in the county, those identifying as Hispanic or Latino are less likely to have health insurance (88.3%) than those identifying as White (96.1%) or Black (97.9%).

Household Composition & Disability Index

- Census tracts with the highest household composition and disability index are in Rising Sun, Perryville, North East, and Elkton.

Exhibit 23: Household Composition and Disability Index – Bottom Quartile Census Tracts

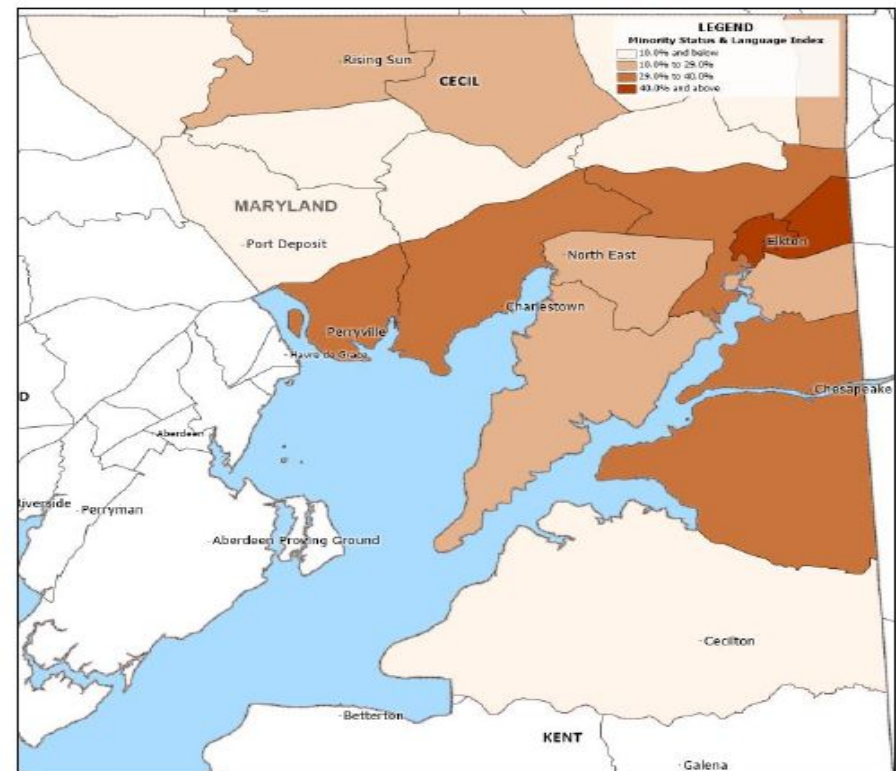


Source: Centers for Disease Control and Prevention, 2018, and Caliper Maptitude, 2021.

Minority Status and Language Index

- No census tracts in Cecil County are in the bottom quartile nationally for this measure.
- A census tract in Elkton had the highest percentage (50.2%) of minority population and individuals who report speaking English “less than well”.

Exhibit 24: Minority Status and Language Index



Source: Centers for Disease Control and Prevention, 2018, and Caliper Maptitude, 2021.

Housing & Transportation Index

- More than half of the census tracts in Cecil County are in the bottom quartile of counties for housing and transportation vulnerability.

Exhibit 25: Housing Type and Transportation Index – Bottom Quartile Census Tracts

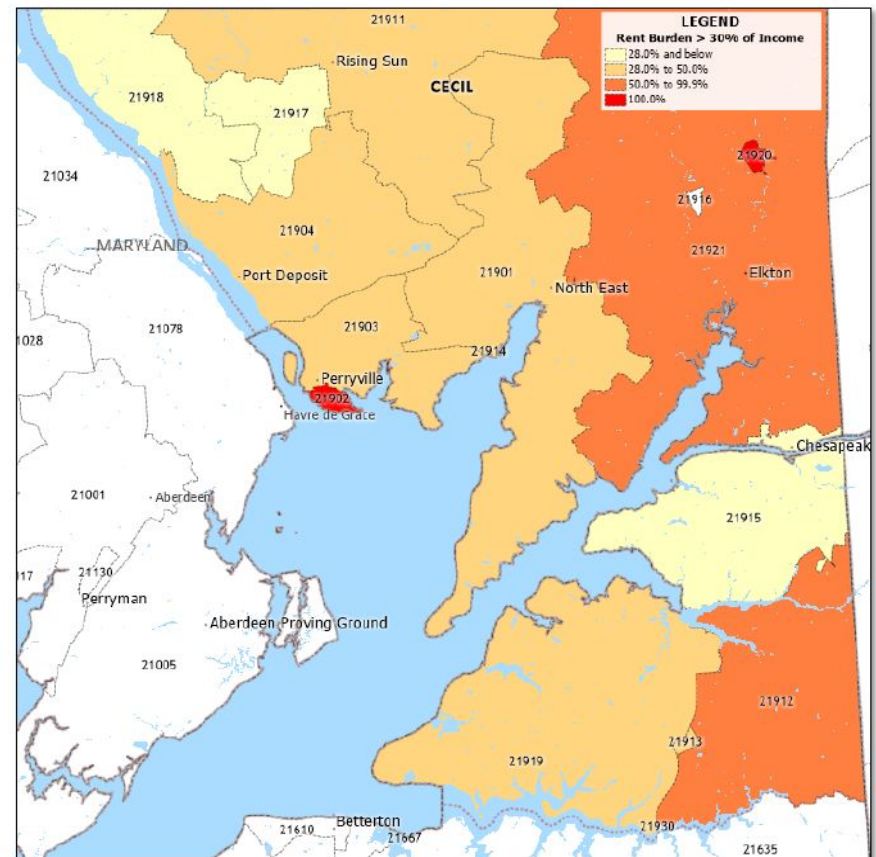


Source: Centers for Disease Control and Prevention, 2018, and Caliper Maptitude, 2021.

Rent Burdened Households

- Elk Mills and Perry Point reported 100% of households experiencing rent burden.
- Elkton (55.6% of households) and Warwick (66.7% of households) both exceeded the U.S. average.

Exhibit 19: Map of Percent of Rented Households Rent Burdened, 2016-2020

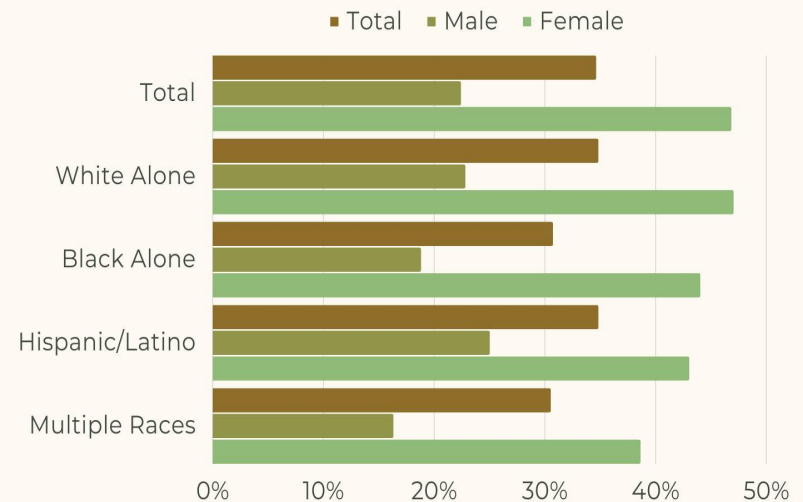


Source: U.S. Census, ACS 5-Year Estimates, 2020, and Caliper Maptitude, 2021.

Youth Mental Health

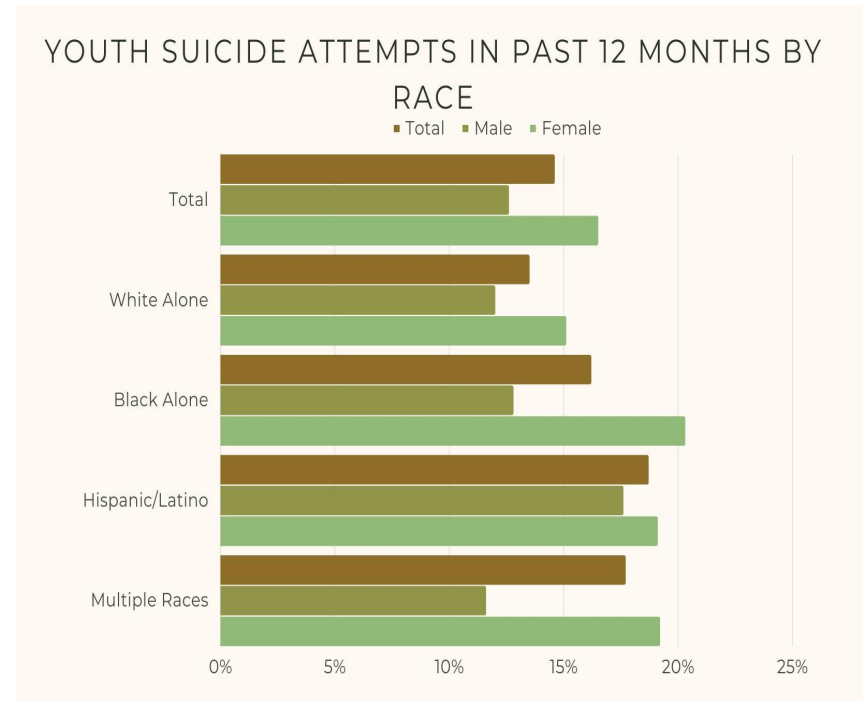
- Youth mental health is a significant public health concern.
- Higher proportion of females (46.8%) than males (34.6%) experiencing poor mental health.
- Significant disparities among LGBTQ+ youth.
 - 65.5% of of gay, lesbian, or bisexual students and 60.0% of those of a different sexual identity or questioning reporting poor mental health vs. 25.7% of heterosexual youth.

REPORTED MENTAL HEALTH AS "MOST OF TIME" OR "ALWAYS" NOT GOOD, 30 DAYS PRIOR TO SURVEY



Youth Suicide Attempts

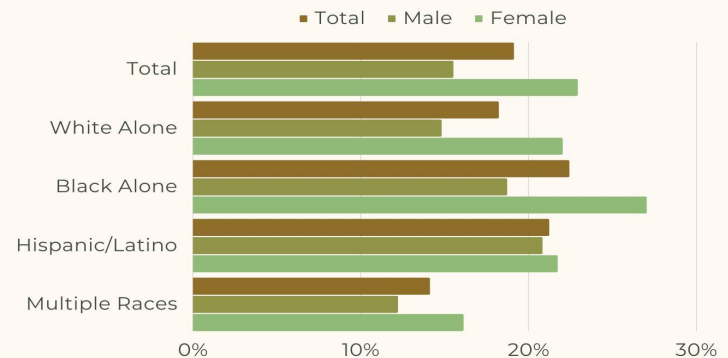
- The proportion of county high school aged youth reporting a suicide attempt was 14.6%.
- Rates were higher among certain racial/ethnic groups, including Hispanic/Latino respondents (17.7%), Black/African American respondents (16.2%), and respondents of multiple races (17.7%)



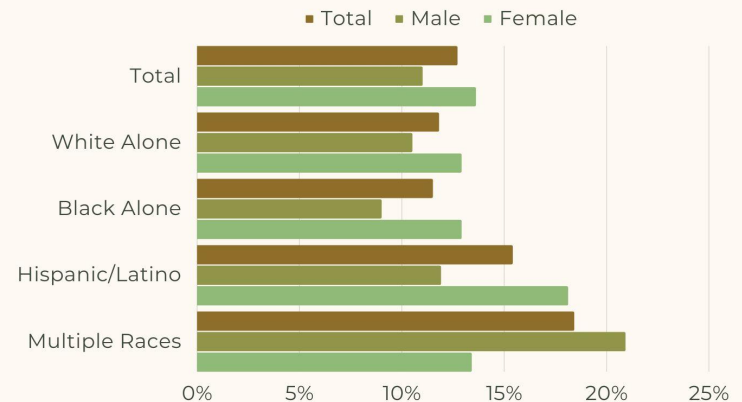
Youth Substance Use

- Marijuana use in the past 30 days was higher among females (22.9%) than males (15.5%).
- Black (22.4%) & Hispanic (21.2%) students reported a higher prevalence of marijuana use than White students (18.2%)
- Non-prescribed pain medicine use was highest among Hispanic/Latino respondents (15.4%) and respondents of multiple races (18.4%).

YOUTH MARIJUANA USE IN 30 DAYS BEFORE SURVEY



YOUTH NON-PRESCRIBED PAIN MEDICINE USE



Opioid Overdose Deaths

- From 2017 to 2021, non-hispanic white residents made up 91.5% percent of opioid overdose deaths, while non-hispanic black residents made up 5.5% percent and Hispanic residents made up 3.1%.
- Persons under 55 made up 83.9% percent of opioid-related deaths.

Data Sources

- U.S. Census Bureau. (2021). American Community Survey: 2017-2021 ACS 5-Year Estimates.
- Cecil County Community Health Needs Assessment 2022. Retrieved from <https://health.maryland.gov/pophealth/Documents/Resources/Cecil%20County%20CHNA-2022.pdf>
- Maryland Youth Risk Behavior Survey (2021). Retrieved from <https://health.maryland.gov/phpa/ccdpc/Reports/Documents/2021%20YRBS%20YTS%20Reports/2021-22%20YRBS-YTS%20Cecil/2021-22%20High%20School/2021MDHS9%20Summary%20Tables.pdf>
- Maryland OOCC. Review of Demographic Overdose Trends in Maryland by Local Jurisdiction. Retrieved from <https://beforeitstoolate.maryland.gov/wp-content/uploads/sites/34/2023/03/OOCC-Grants-Reference-Demographic-Information-pdf>
-



Task Force & Community Updates