

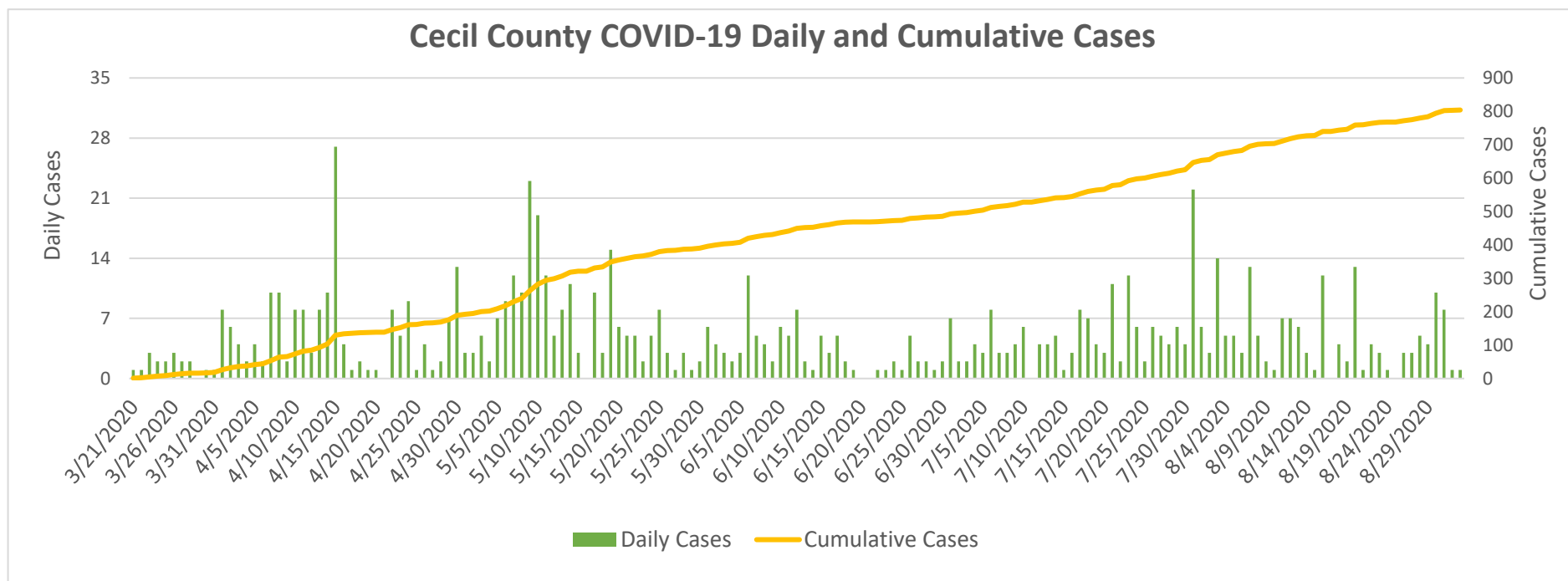


## Cecil County COVID-19 Weekly Reports

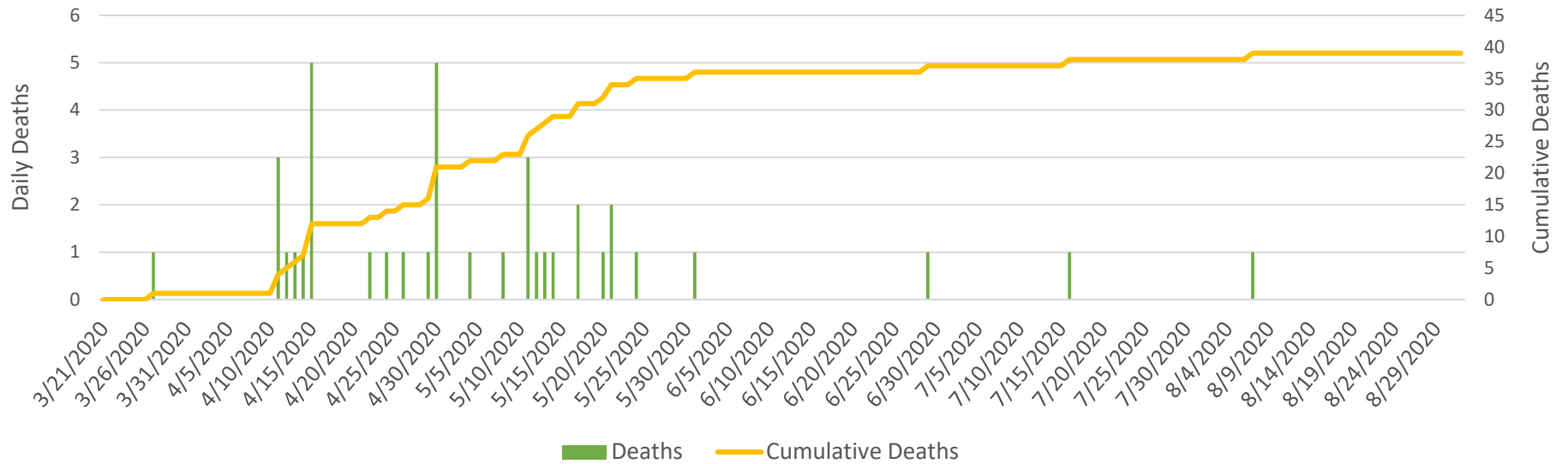
Number of Confirmed Cases	804
Number of Confirmed Deaths	39
Released from Isolation	655

Updated:

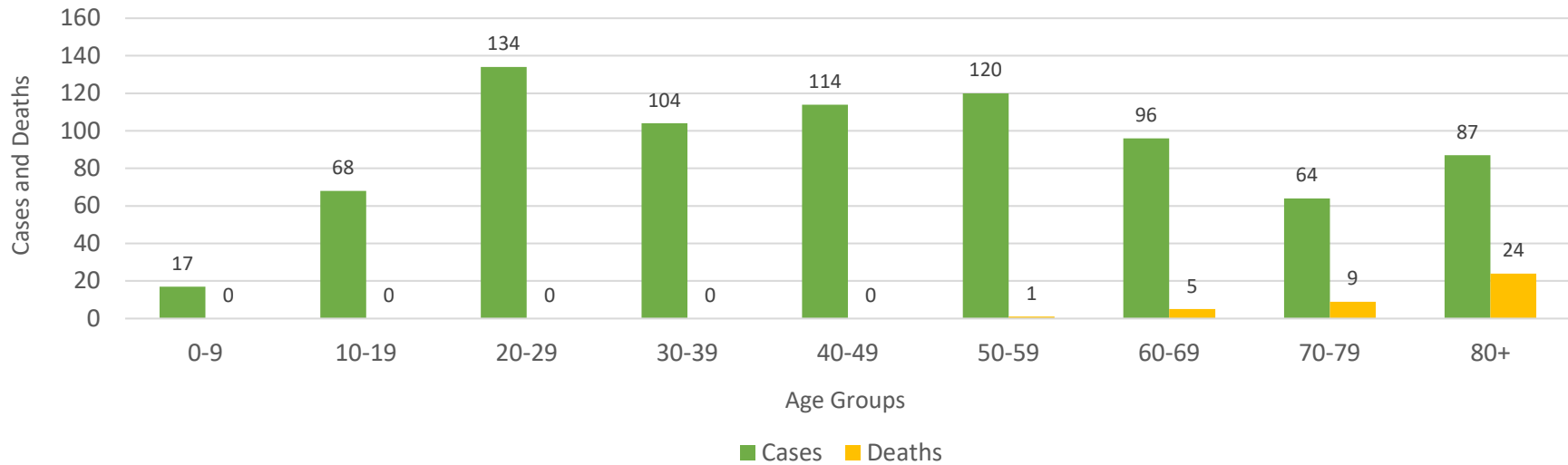
September 01, 2020



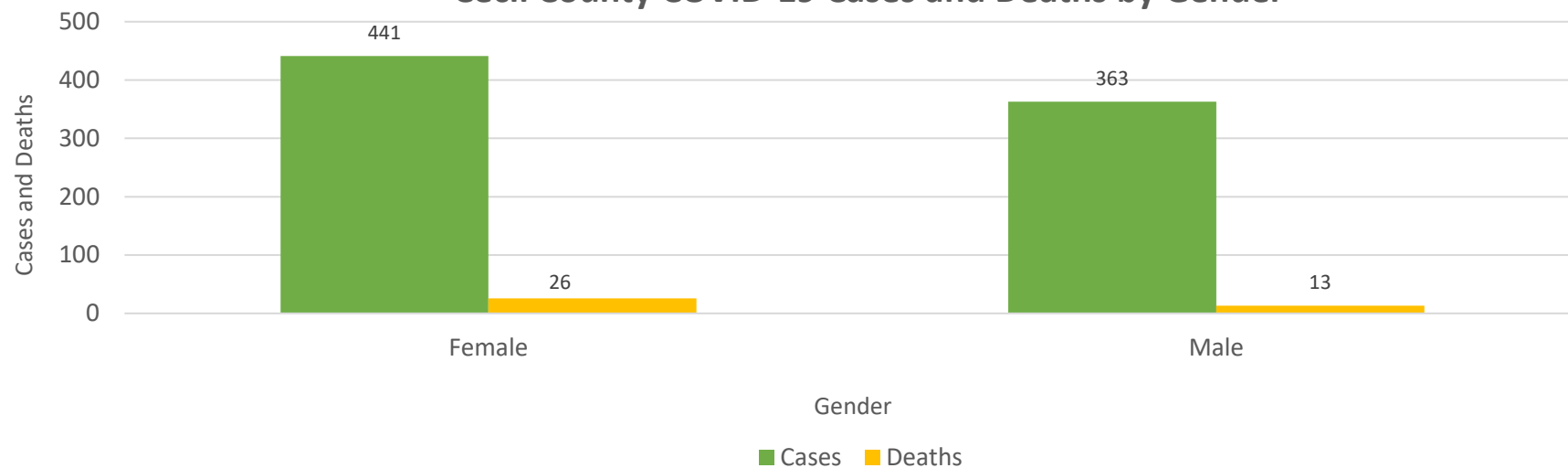
### Cecil County COVID-19 Daily and Cumulative Deaths



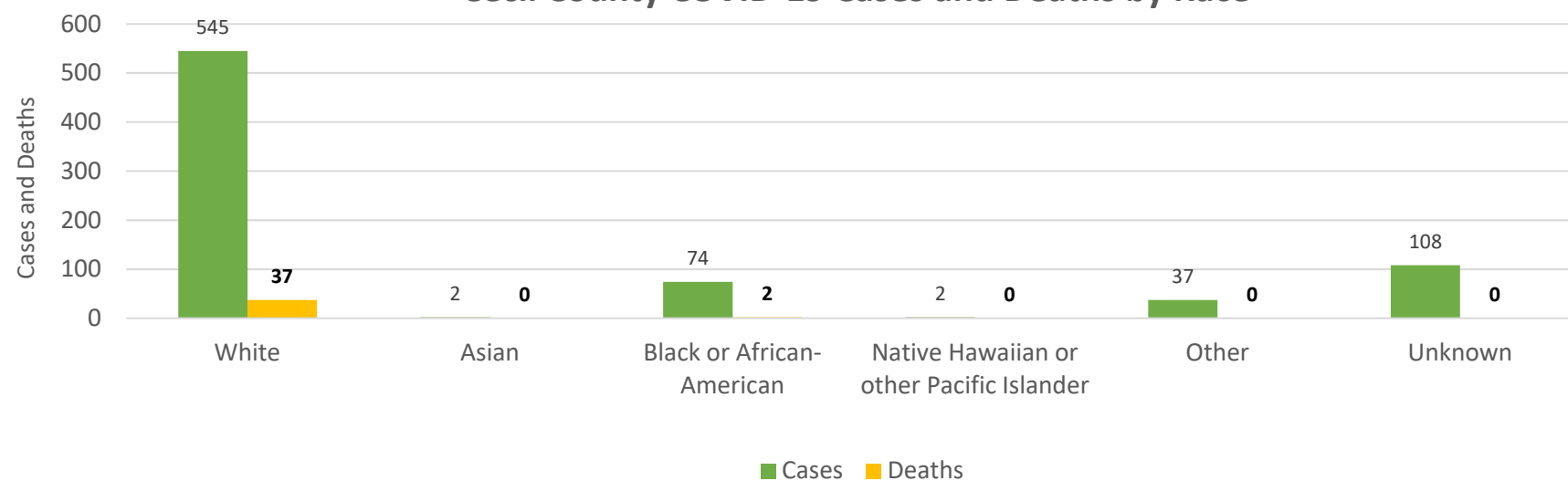
### Cecil County COVID-19 Cases and Deaths by Age Groups



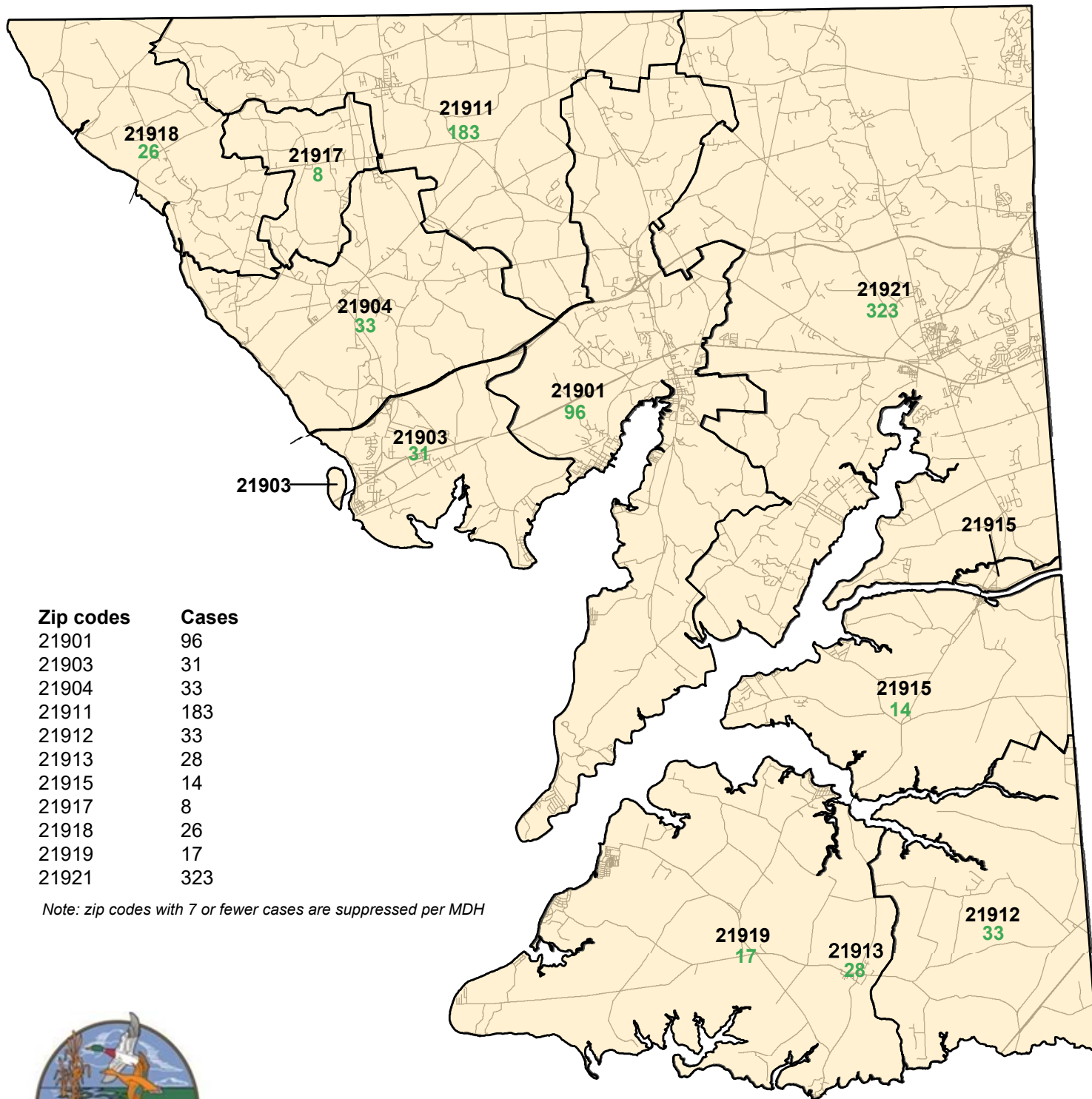
### Cecil County COVID-19 Cases and Deaths by Gender



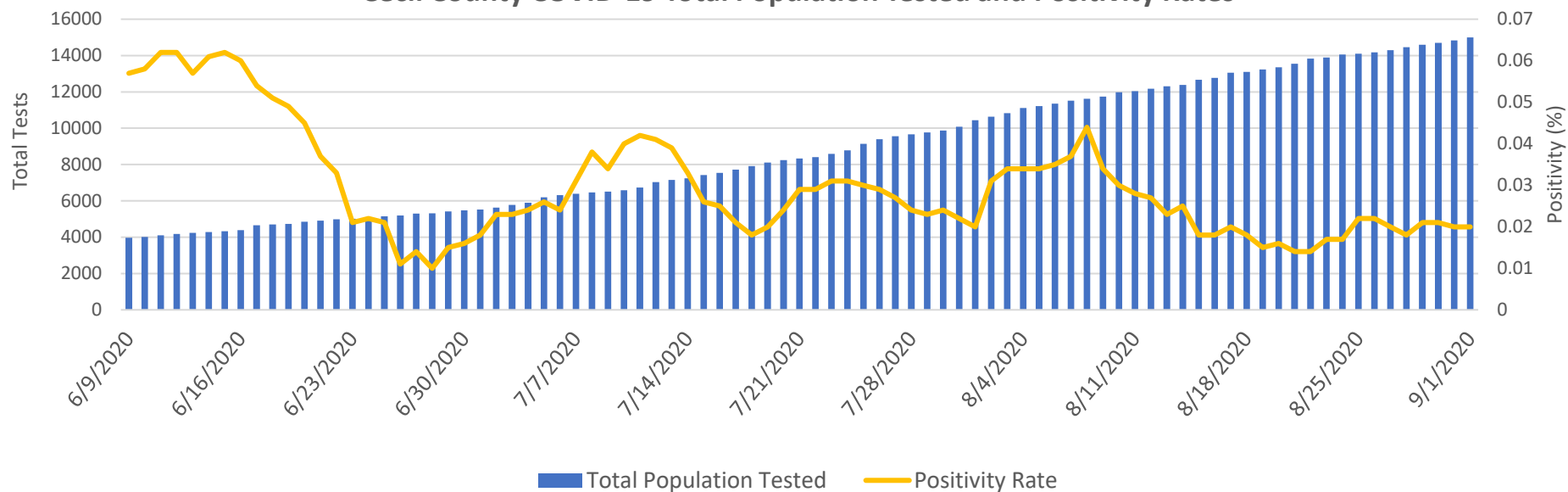
### Cecil County COVID-19 Cases and Deaths by Race



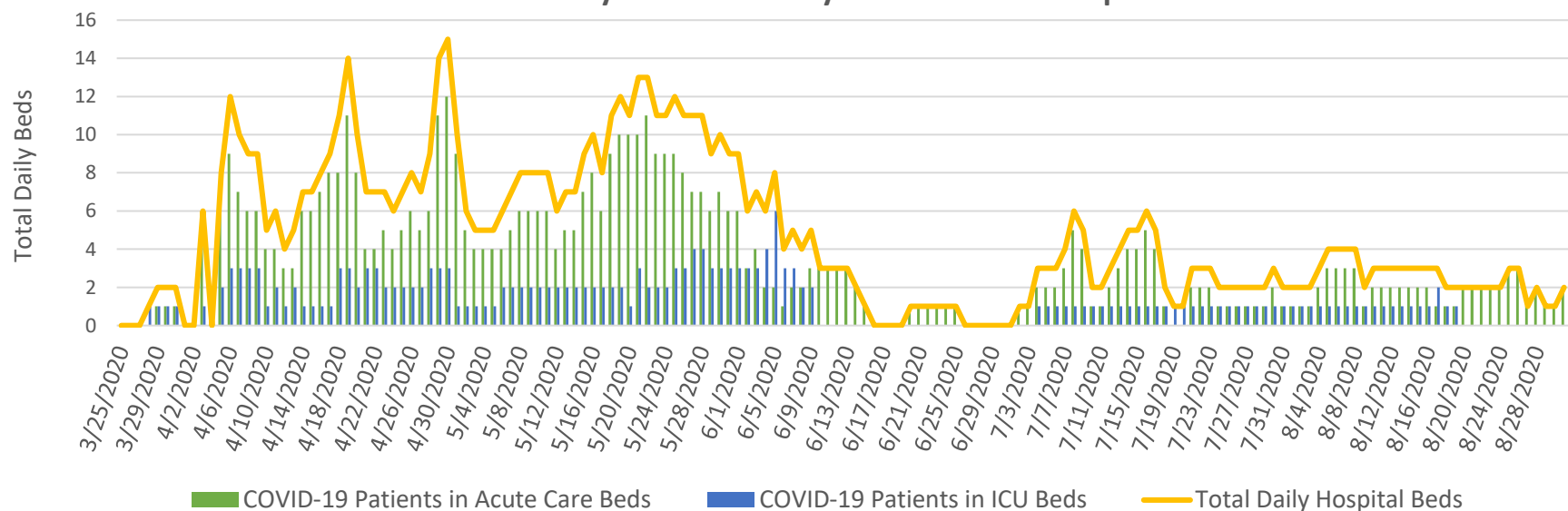
# Cecil County COVID-19 Cases by Zip Codes as of 09/01/2020



### Cecil County COVID-19 Total Population Tested and Positivity Rates



### Cecil County COVID-19 Daily ICU and Acute Hospital Beds



Jurisdiction Cecil--Reporting Facility	# of Unique ELRs	Turn Around Time (days)	Turn Around Time (days)	Turn Around Time (days)
		Median	25th Percentile	75th Percentile
Acutis Diagnostics	9	3.0	3.0	3.0
UNIVERSITY OF MD PATH ASSOC - MD GENOMICS	11	4.0	3.0	4.0
Johns Hopkins Medical Laboratories	24	1.0	0.0	1.0
BIOREFERENCE LABORATORIES INC	25	3.0	3.0	4.0
MDPHL	36	3.0	2.0	3.0
QUEST TETERBORO	51	4.0	3.0	4.0
Cian Diagnostics	150	2.0	2.0	4.0
Mako Medical Laboratories	192	2.0	2.0	3.0
Curative DC	205	2.0	2.0	3.0
LABCORP	395	2.0	2.0	3.0
<b>Total</b>	<b>1171</b>	<b>2.0</b>	<b>2.0</b>	<b>3.0</b>

From ELRs received: 8/24/2020-8/30/2020

Total is summary of all tests/labs - not just the high volume labs

Turn around time is the difference in reported date of collection and date reported to public health. Note that this includes time specimens are held at a collecting location and transit time to the lab. Therefore it is not solely a marker of capacity and response at a lab.

**Data sources:**

Cecil County Health Department COVID-19 Tracking Systems (CCHDC19TS)

Maryland Department of Health (MDH)

Maryland Department of Planning Services (MDPS)

Chesapeake Regional Information Systems for our Patients (CRISP)

CRISP-Maryland Institute for Emergency Medical Services Systems (MIEMSS)

**Notes: Data in these charts show:**

Confirmed cases by positive test result and result date on the daily basis since March 21, 2020;

Deaths by the last activity date with a last status of close-deceased from COVID-19;

Total daily beds as sums of daily ICU and acute beds for Union Hospital-Cecil County only;

Hospital data are self-reported by hospitals to MIEMSS that reflect point in time counts;

Zip codes with  $\leq 7$  cases will be suppressed according to MDH.