



HEALTHY *people*. HEALTHY *community*. HEALTHY *future*.

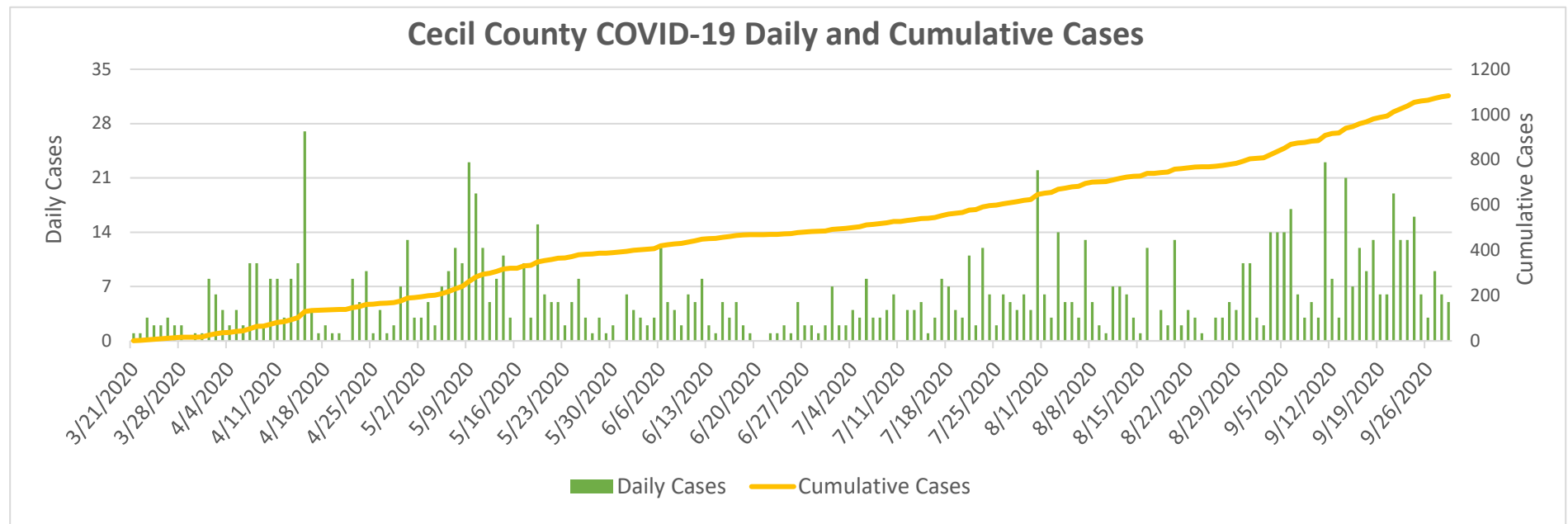
JOHN M. BYERS HEALTH CENTER
401 BOW ST., ELKTON, MD 21921
Tel.: 410-996-5550
www.cecilcountyhealth.org
info@cecilcountyhealth.org

Cecil County COVID-19 Weekly Reports

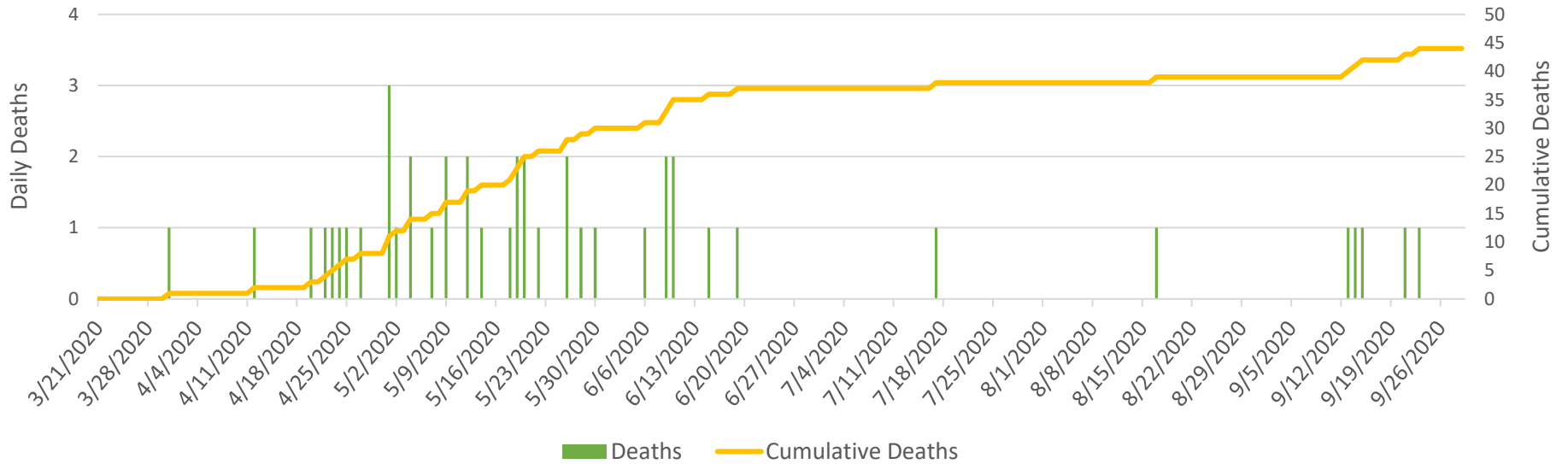
Number of Confirmed Cases	1,083
Number of Confirmed Deaths	44
Released from Isolation	854

Updated:

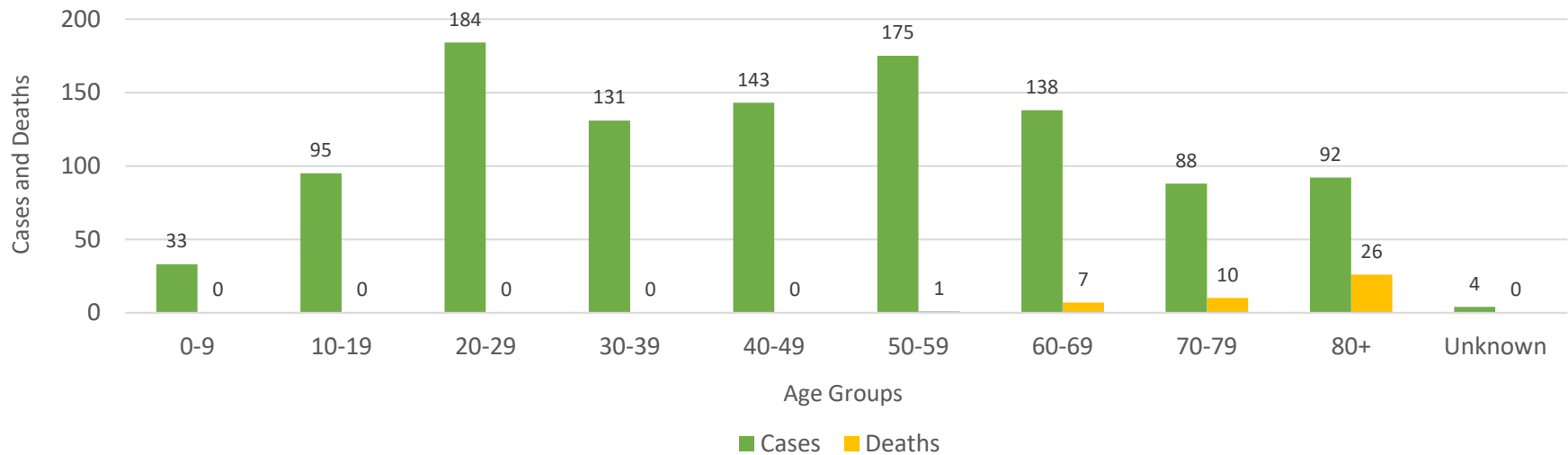
September 29, 2020



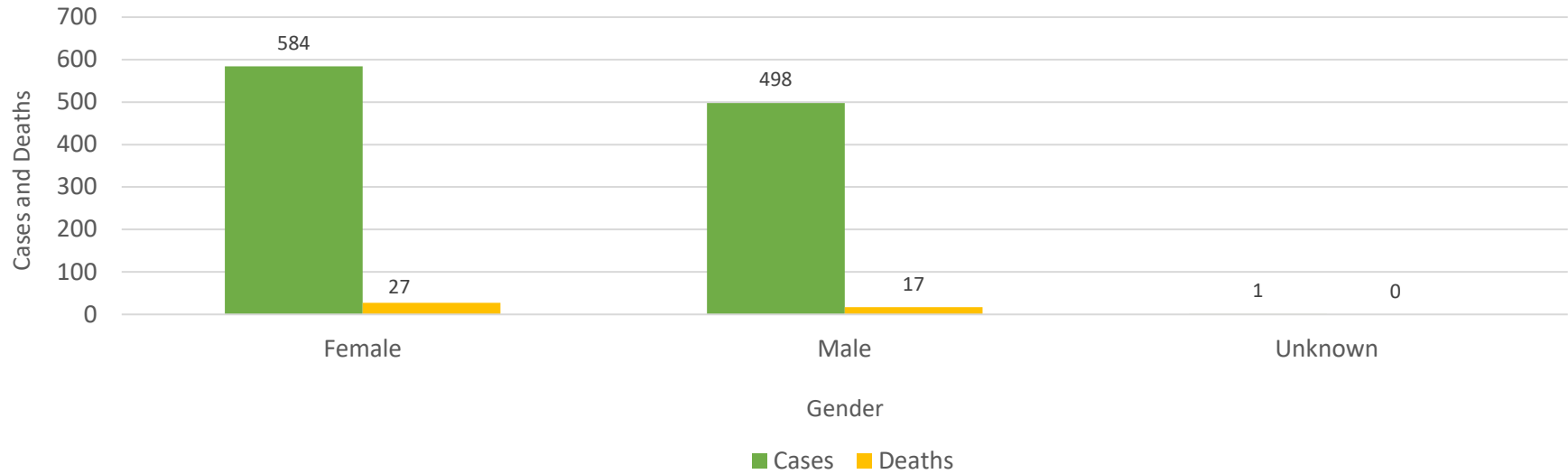
Cecil County COVID-19 Daily and Cumulative Deaths



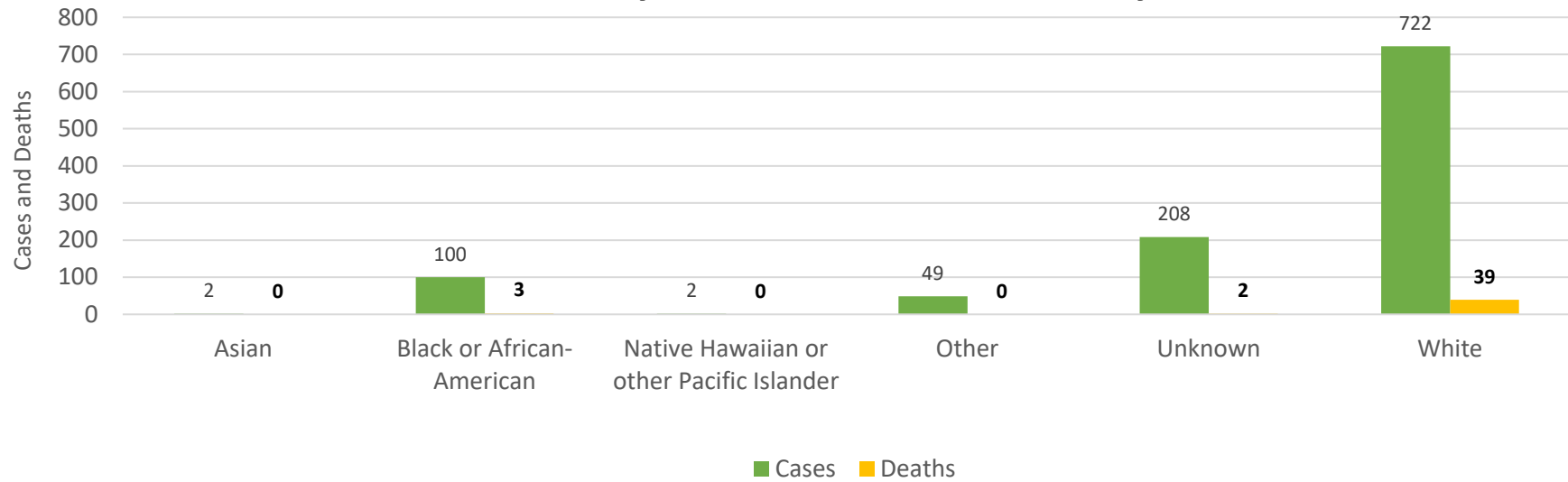
Cecil County COVID-19 Cases and Deaths by Age Groups



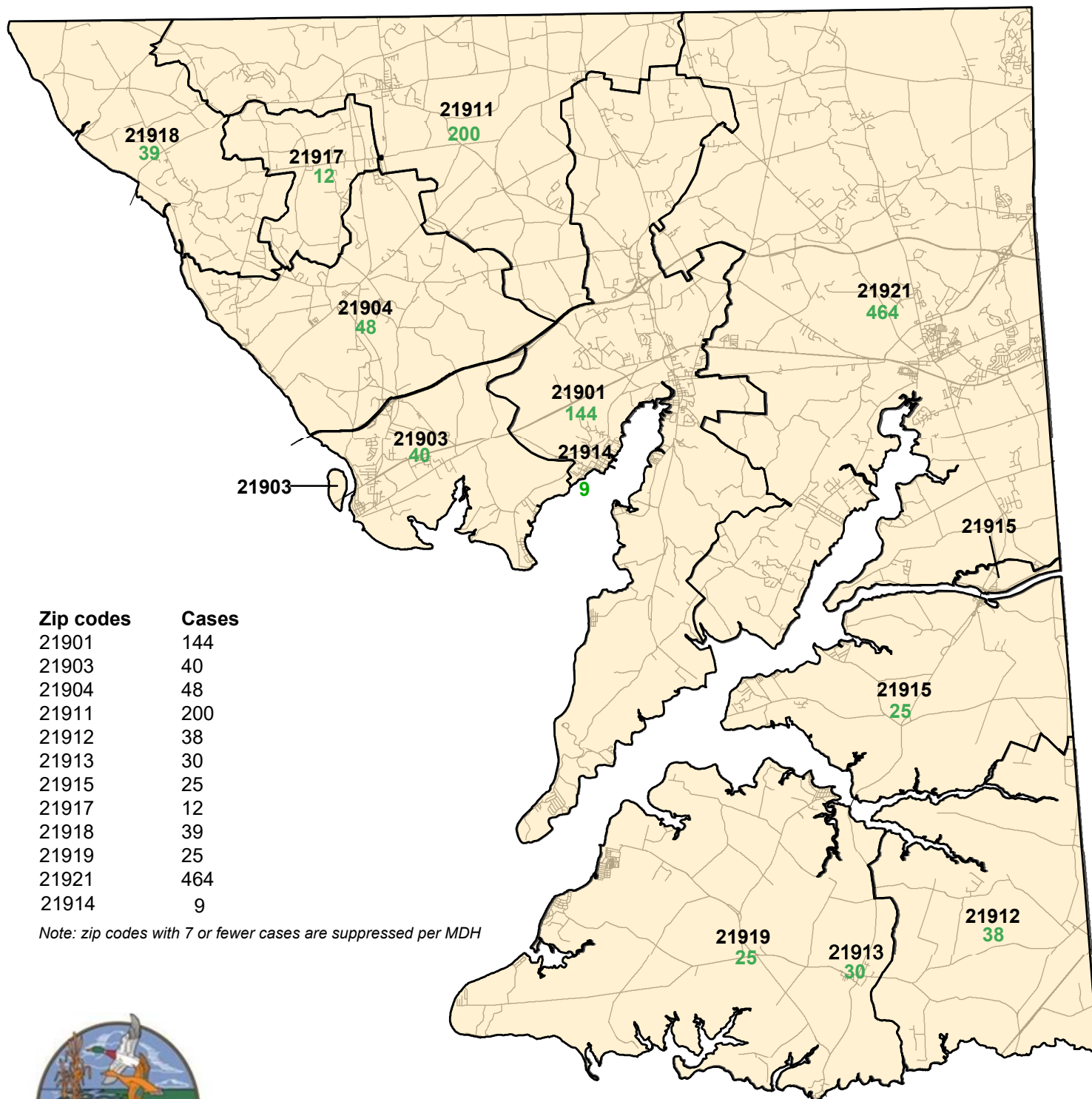
Cecil County COVID-19 Cases and Deaths by Gender



Cecil County COVID-19 Cases and Deaths by Race



Cecil County COVID-19 Cases by Zip Codes as of 09/29/2020

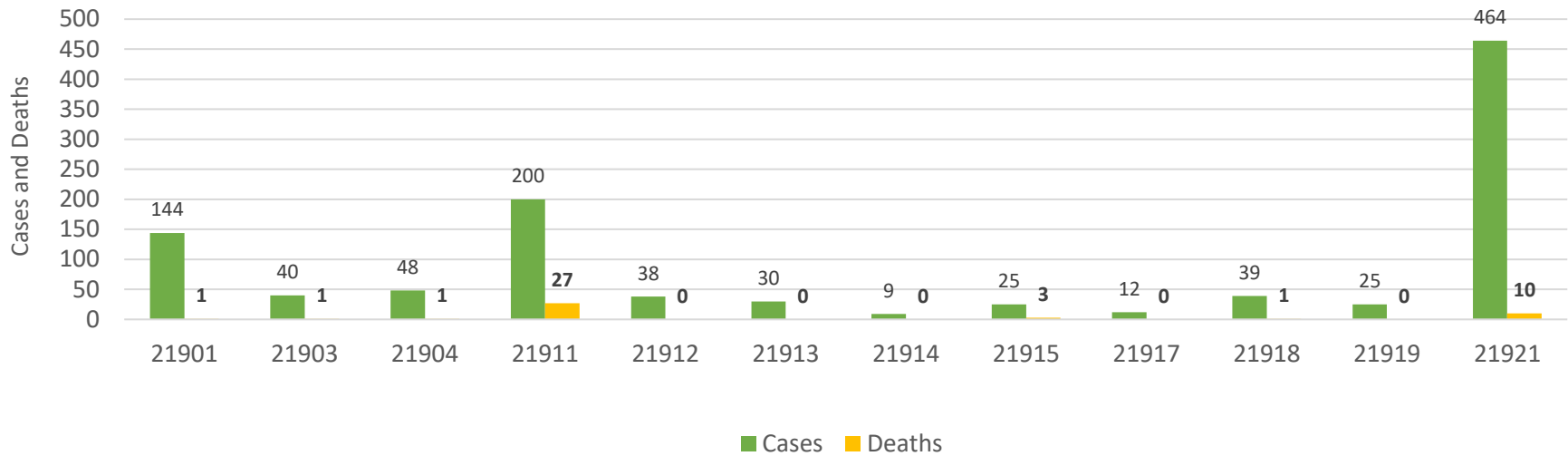


Zip codes	Cases
21901	144
21903	40
21904	48
21911	200
21912	38
21913	30
21915	25
21917	12
21918	39
21919	25
21921	464
21914	9

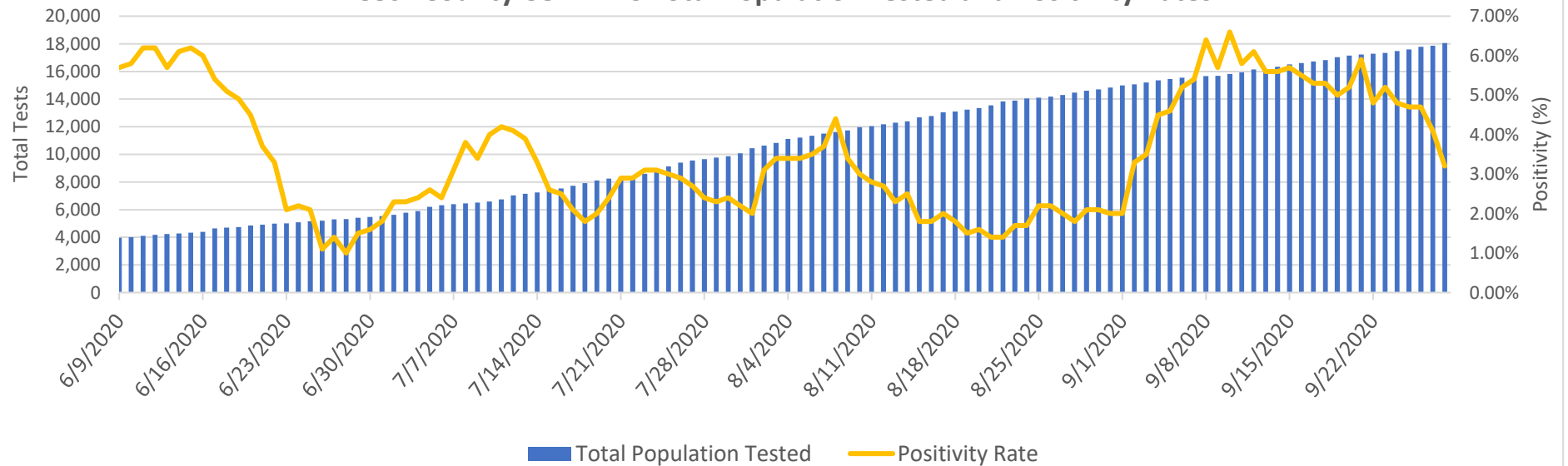
Note: zip codes with 7 or fewer cases are suppressed per MDH



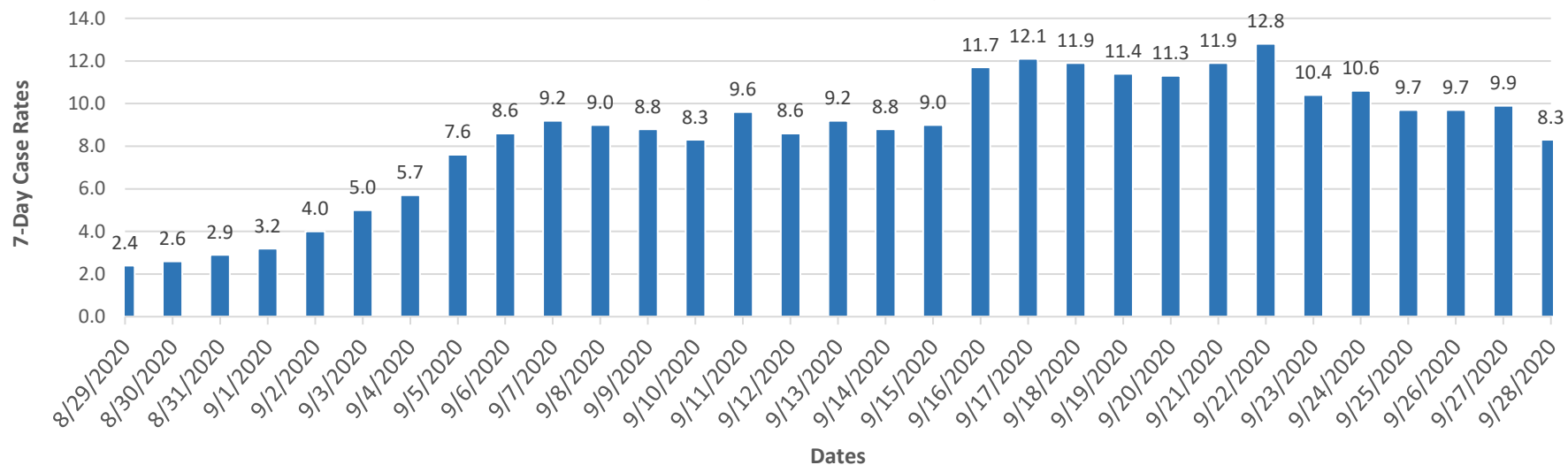
Cecil County COVID-19 Cases and Deaths by Zip Codes



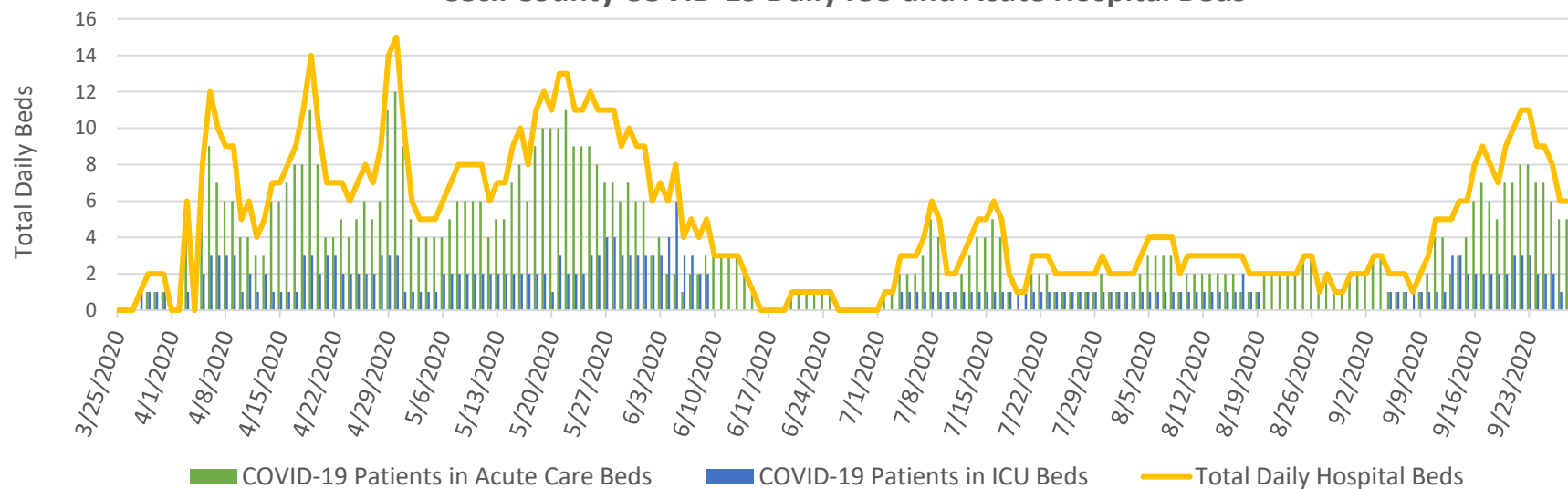
Cecil County COVID-19 Total Population Tested and Positivity Rates



Cecil County COVID-19 7-Day Case Rates



Cecil County COVID-19 Daily ICU and Acute Hospital Beds



Jurisdiction Cecil--Reporting Facility	# of Unique ELRs	Turn Around Time (days)	Turn Around Time (days)	Turn Around Time (days)
		Median	25th Percentile	75th Percentile
MDPHL	8	2.0	2.0	3.0
Cirrus Dx	46	4.0	4.0	4.0
GENETWORX	46	2.0	2.0	2.0
UNIVERSITY OF MD PATH ASSOC - MD GENOMICS	47	4.0	3.0	4.0
Johns Hopkins Medical Laboratories	51	1.0	1.0	1.0
UMMC Central Lab	67	2.0	1.0	2.0
QUEST TETERBORO	80	3.0	3.0	4.0
Curative DC	113	3.0	2.0	3.0
AHALABS	173	4.0	4.0	5.0
Cian Diagnostics	267	3.0	3.0	4.0
Mako Medical Laboratories	274	3.0	1.0	3.0
LABCORP	429	2.0	2.0	3.0
Total	1725	3.0	2.0	4.0

From ELRs received: 9/21/2020-9/27/2020; total is summary of all tests/labs - not just the high volume labs.

Turn around time is the difference in reported date of collection and date reported to public health. Note that this includes time specimens are held at a collecting location and transit time to the lab. Therefore, it is not solely a marker of capacity and response at a lab.

Data sources:

Cecil County Health Department COVID-19 Tracking Systems (CCHDC19TS)

Maryland Department of Health (MDH)

Maryland Department of Planning Services (MDPS)

Chesapeake Regional Information Systems for our Patients (CRISP)

CRISP-Maryland Institute for Emergency Medical Services Systems (MIEMSS)

Notes: Data in these charts show:

Confirmed cases by positive test result and result date on the daily basis since March 21, 2020;

Deaths by the last activity date with a last status of close-deceased from COVID-19;

Total daily beds as sums of daily ICU and acute beds for Union Hospital-Cecil County only; self-reported hospital data to MIEMSS reflect point in time counts;

Zip codes with ≤ 7 cases will be suppressed according to MDH.