



HEALTHY people . HEALTHY community. HEALTHY future.

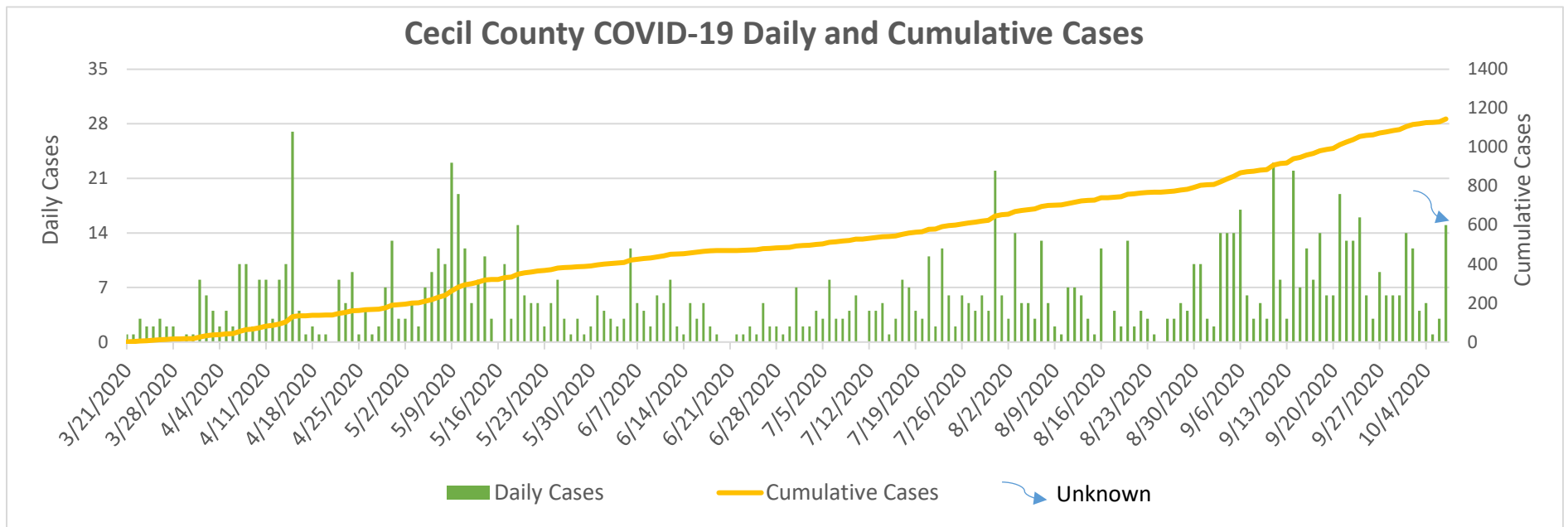
JOHN M. BYERS HEALTH CENTER  
401 BOW ST., ELKTON, MD 21921  
Tel.: 410-996-5550  
[www.cecilcountyhealth.org](http://www.cecilcountyhealth.org)  
[info@cecilcountyhealth.org](mailto:info@cecilcountyhealth.org)

## Cecil County COVID-19 Weekly Reports

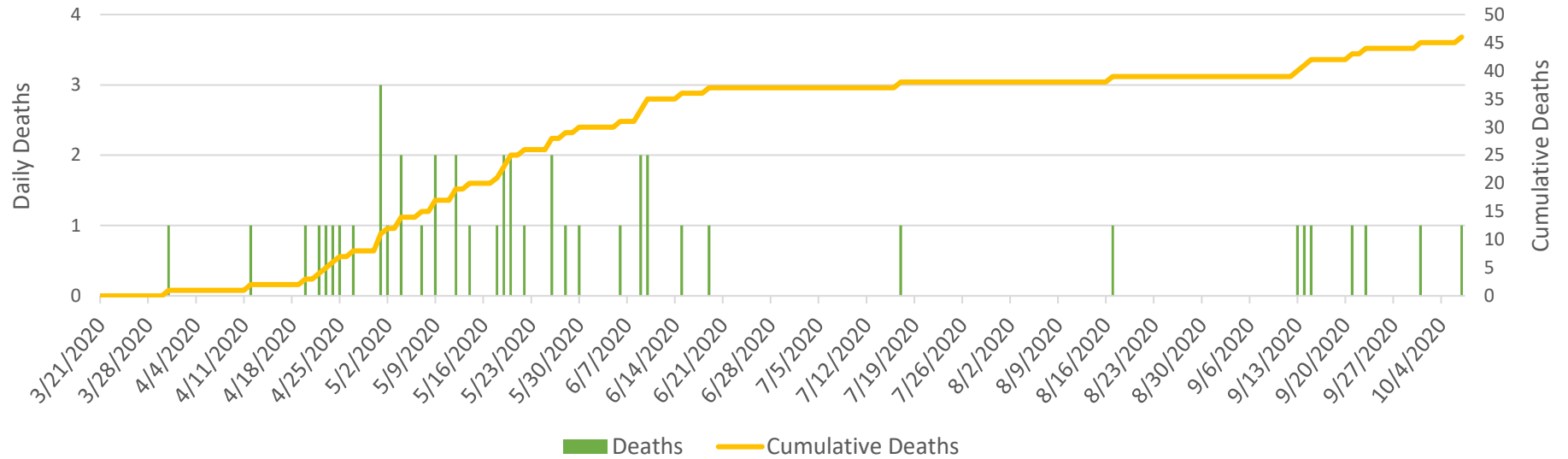
Number of Confirmed Cases	1,145
Number of Confirmed Deaths	46
Released from Isolation	917

Updated:

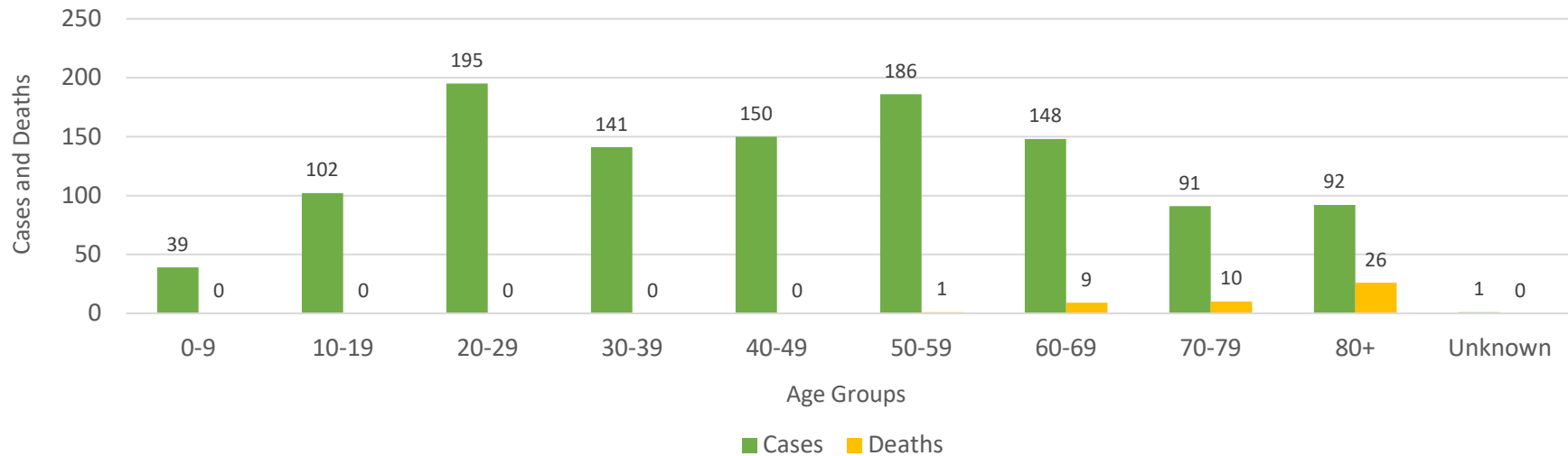
October 6, 2020



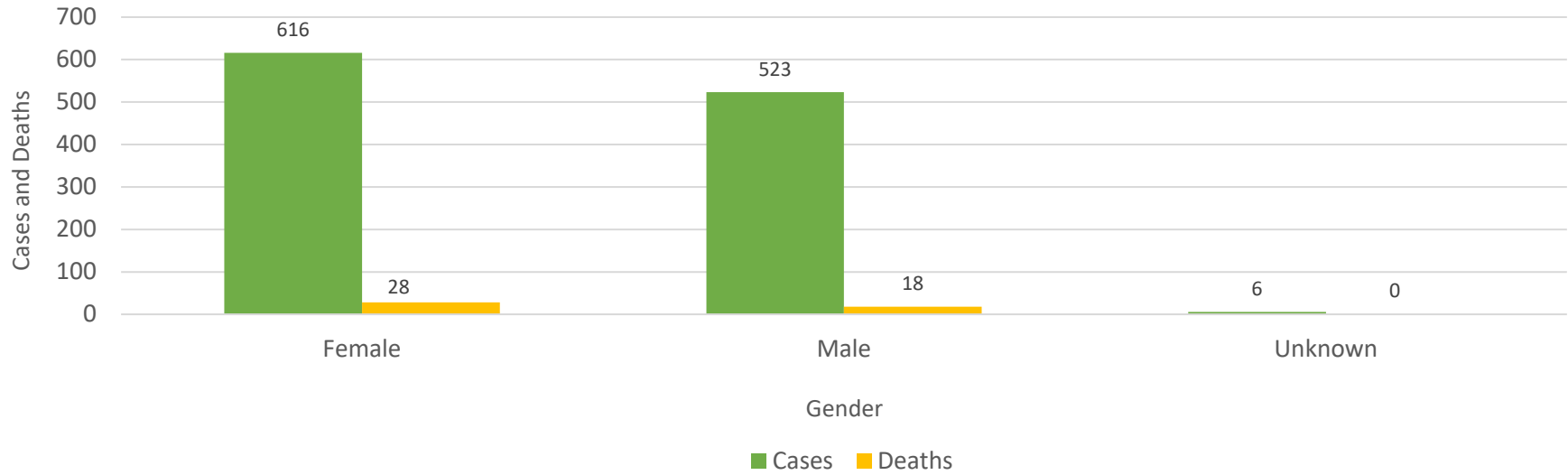
### Cecil County COVID-19 Daily and Cumulative Deaths



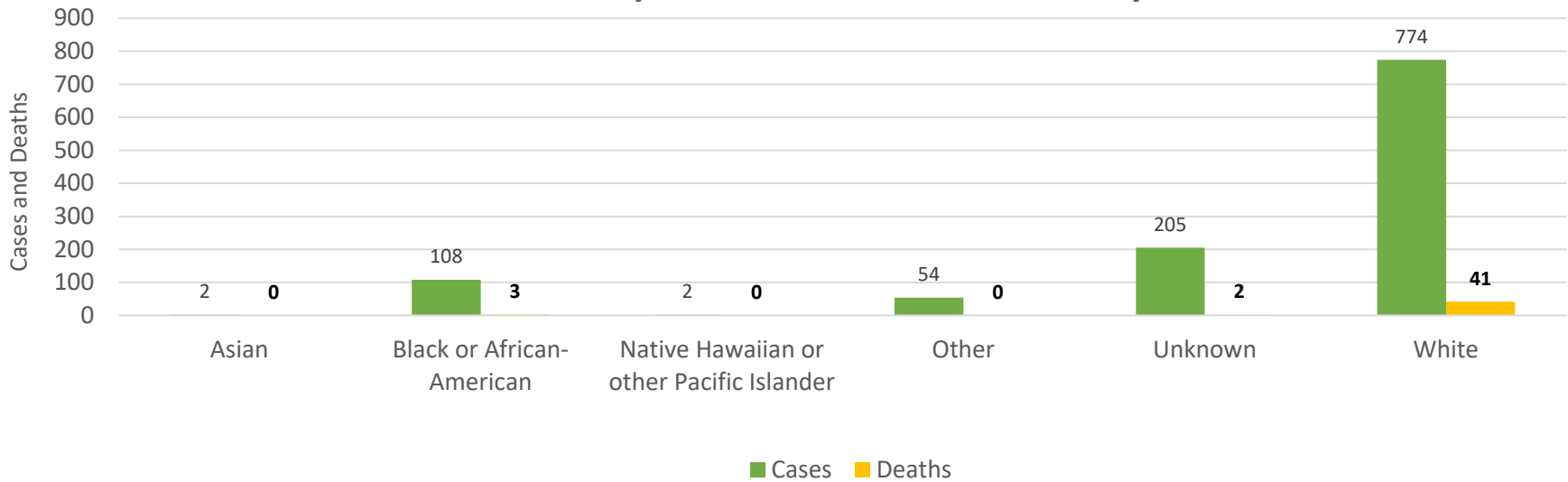
### Cecil County COVID-19 Cases and Deaths by Age Groups



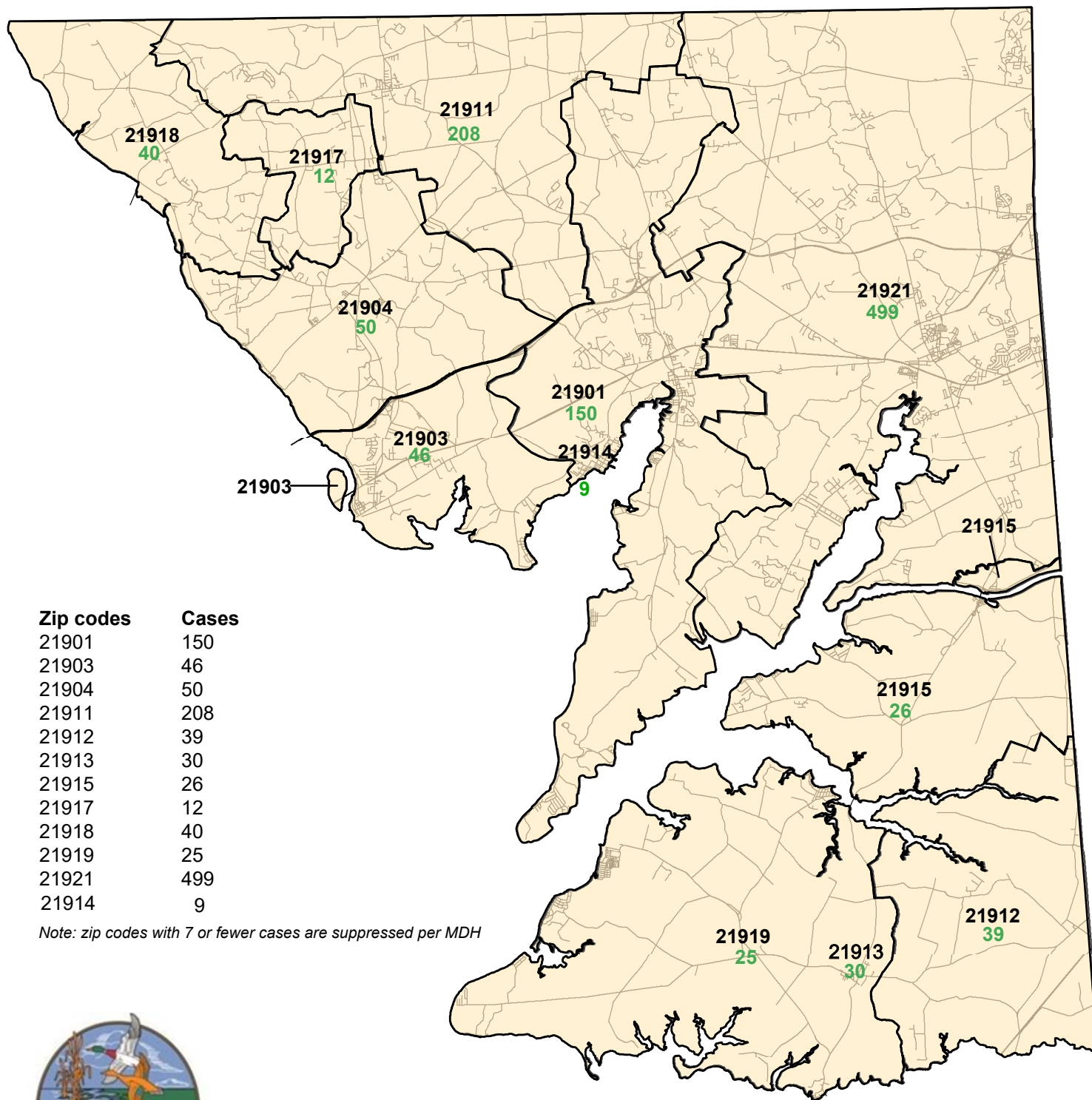
**Cecil County COVID-19 Cases and Deaths by Gender**



**Cecil County COVID-19 Cases and Deaths by Race**



## Cecil County COVID-19 Cases by Zip Codes as of 10/06/2020

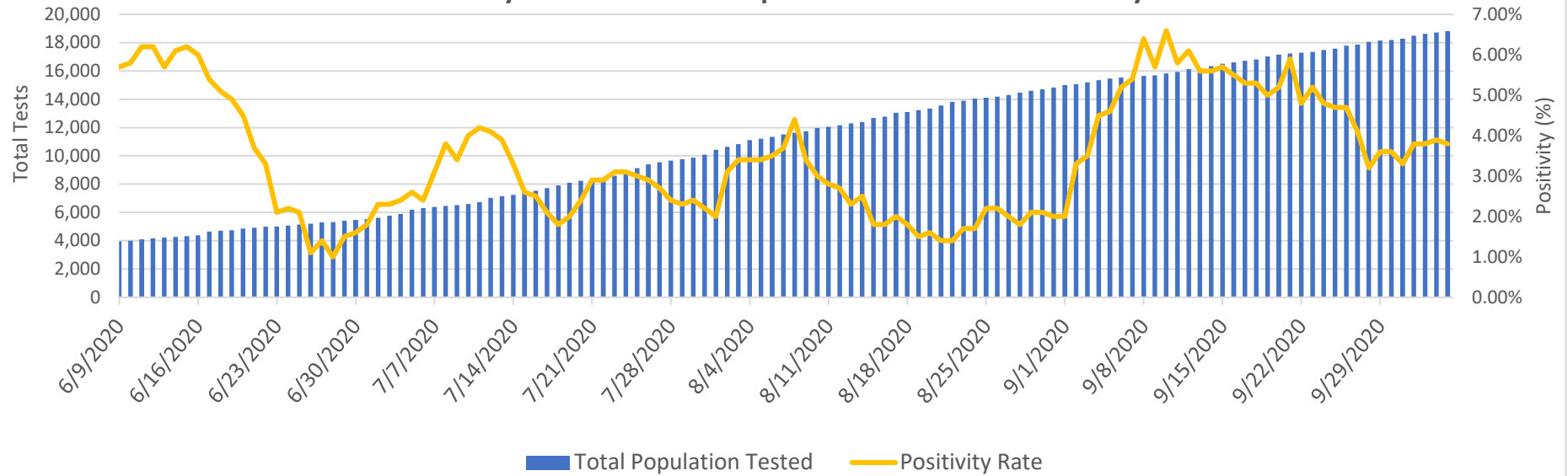


Zip codes	Cases
21901	150
21903	46
21904	50
21911	208
21912	39
21913	30
21915	26
21917	12
21918	40
21919	25
21921	499
21914	9

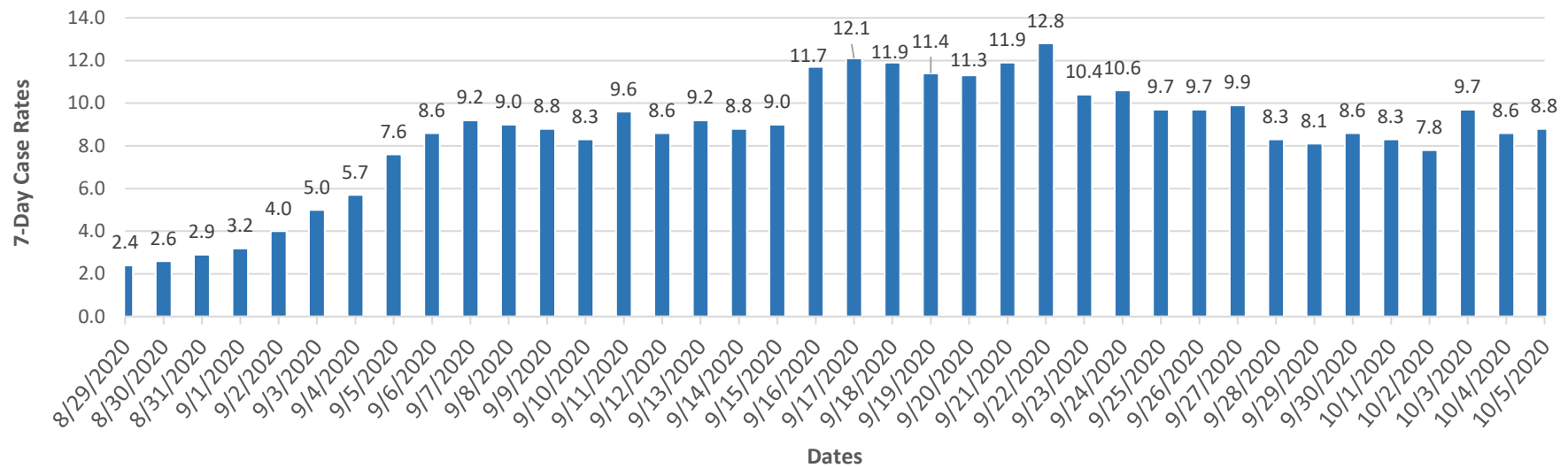
Note: zip codes with 7 or fewer cases are suppressed per MDH

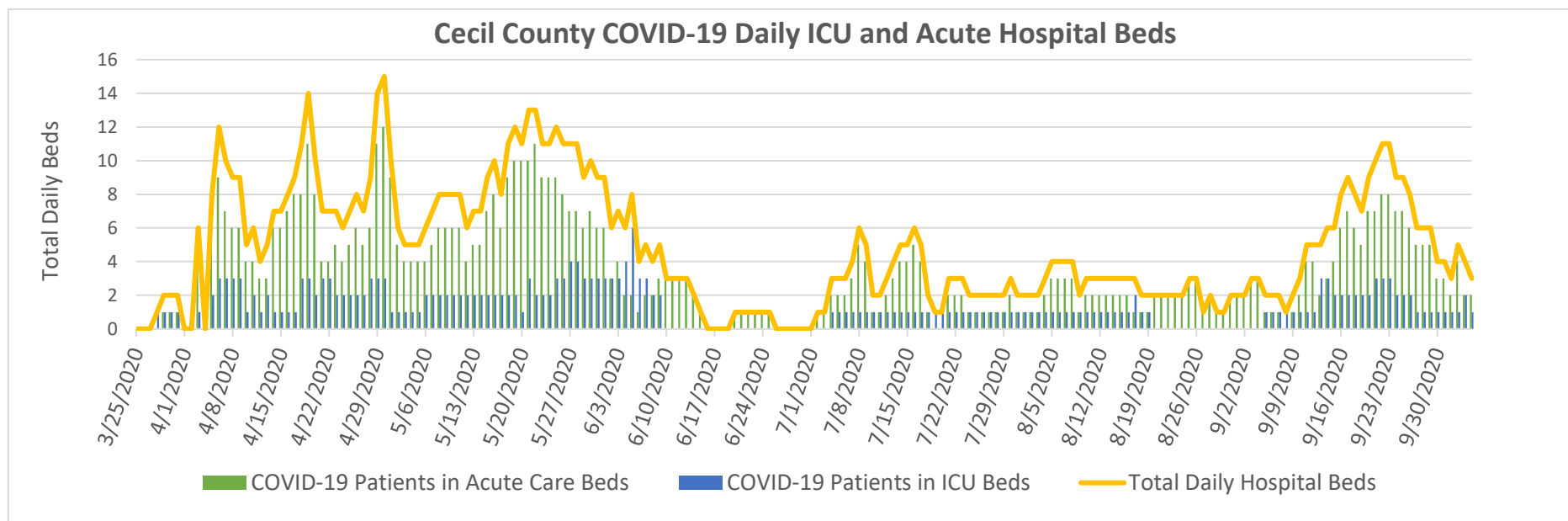


### Cecil County COVID-19 Total Population Tested and Positivity Rates



### Cecil County COVID-19 7-Day Case Rates





**Data sources:**

Cecil County Health Department COVID-19 Tracking Systems (CCHDC19TS)  
 Maryland Department of Health (MDH)  
 Maryland Department of Planning Services (MDPS)  
 Chesapeake Regional Information Systems for our Patients (CRISP)  
 CRISP-Maryland Institute for Emergency Medical Services Systems (MIEMSS)

**Notes: Data in these charts show:**

Confirmed cases by positive test result and result date on the daily basis since March 21, 2020;  
 Deaths by the last activity date with a last status of close-deceased from COVID-19;  
 Total daily beds as sums of daily ICU and acute beds for Union Hospital-Cecil County only; self-reported hospital data to MIEMSS reflect point in time counts;  
 Zip codes with  $\leq 7$  cases will be suppressed according to MDH.

Jurisdiction Cecil--Reporting Facility	# of Unique ELRs	Turn Around Time (days)	Turn Around Time (days)	Turn Around Time (days)
		Median	25th Percentile	75th Percentile
MDPHL	21	3.0	2.0	3.0
Cirrus Dx	33	3.0	3.0	3.0
GENETWORX	47	2.0	2.0	2.0
Johns Hopkins Medical Laboratories	57	1.0	1.0	1.0
QUEST TETERBORO	72	3.0	3.0	4.0
UMMC Central Lab	74	1.0	1.0	2.0
AHALABS	95	4.0	3.0	4.0
Curative DC	123	3.0	2.0	3.0
Cian Diagnostics	165	4.0	3.0	4.0
Mako Medical Laboratories	242	2.0	2.0	3.0
LABCORP	460	2.0	2.0	2.0
Total	1544	2.0	2.0	3.0
Total	1725	3.0	2.0	4.0

From ELRs received: 9/28/2020-10/4/2020; total is summary of all tests/labs - not just the high volume labs.

Turn around time is the difference in reported date of collection and date reported to public health. Note that this includes time specimens are held at a collecting location and transit time to the lab. Therefore, it is not solely a marker of capacity and response at a lab.