



HEALTHY people . HEALTHY community. HEALTHY future.

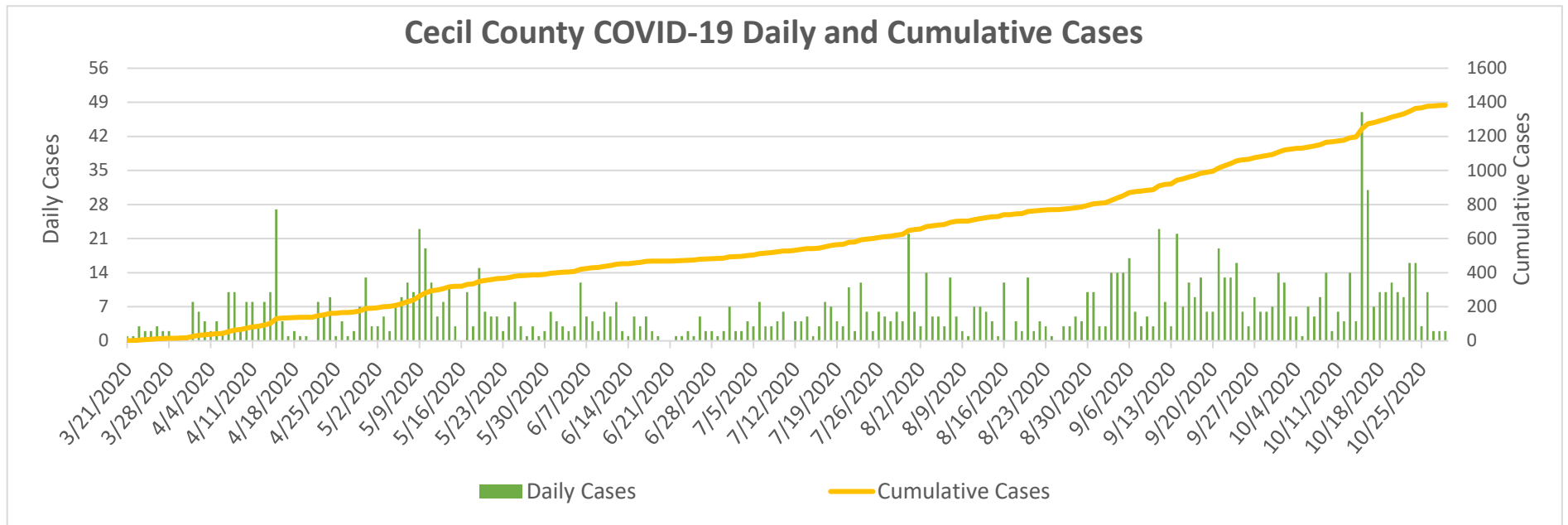
JOHN M. BYERS HEALTH CENTER
401 BOW ST., ELKTON, MD 21921
Tel.: 410-996-5550
www.cecilcountyhealth.org
info@cecilcountyhealth.org

Cecil County COVID-19 Weekly Reports

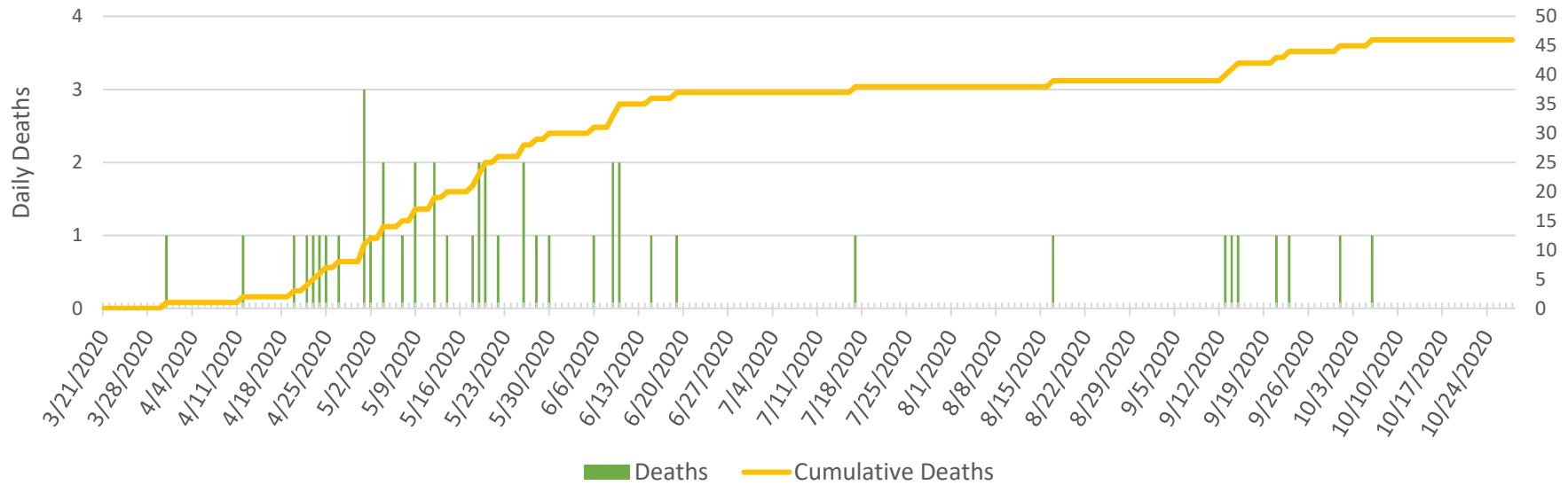
Number of Confirmed Cases	1,383
Number of Confirmed Deaths	46
Released from Isolation	1,087

Updated:

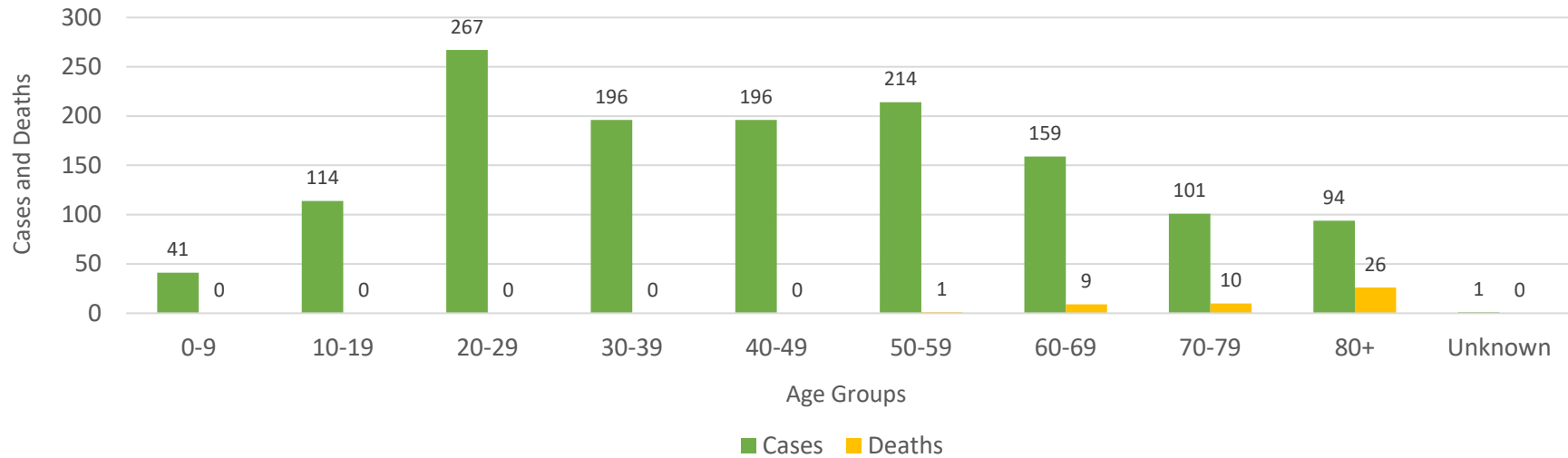
October 28, 2020



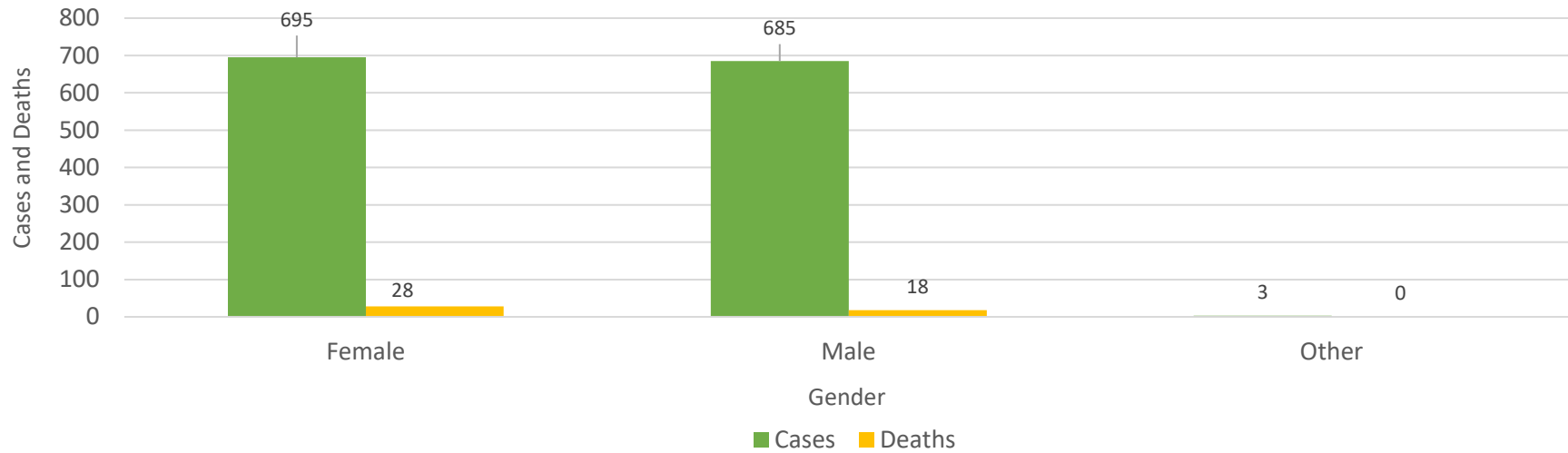
Cecil County COVID-19 Daily and Cumulative Deaths



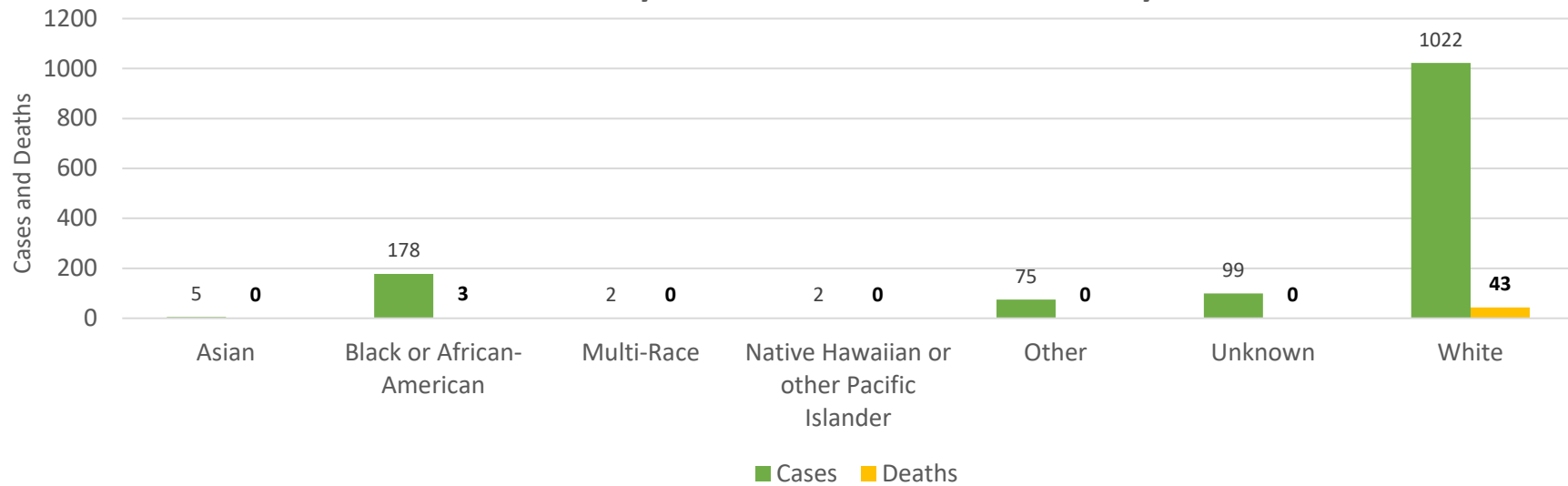
Cecil County COVID-19 Cases and Deaths by Age Groups



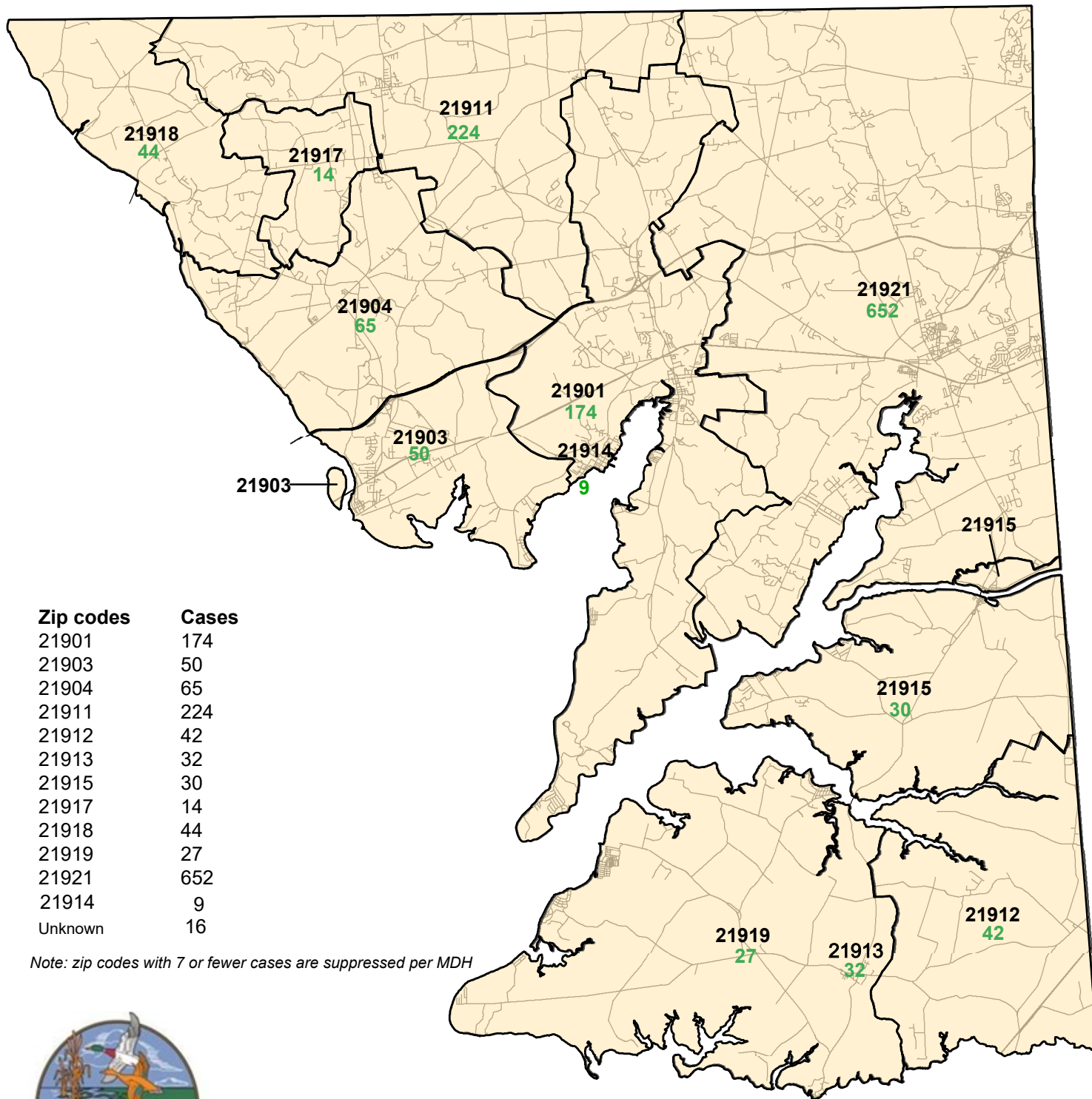
Cecil County COVID-19 Cases and Deaths by Gender



Cecil County COVID-19 Cases and Deaths by Race



Cecil County COVID-19 Cases by Zip Codes as of 10/28/2020

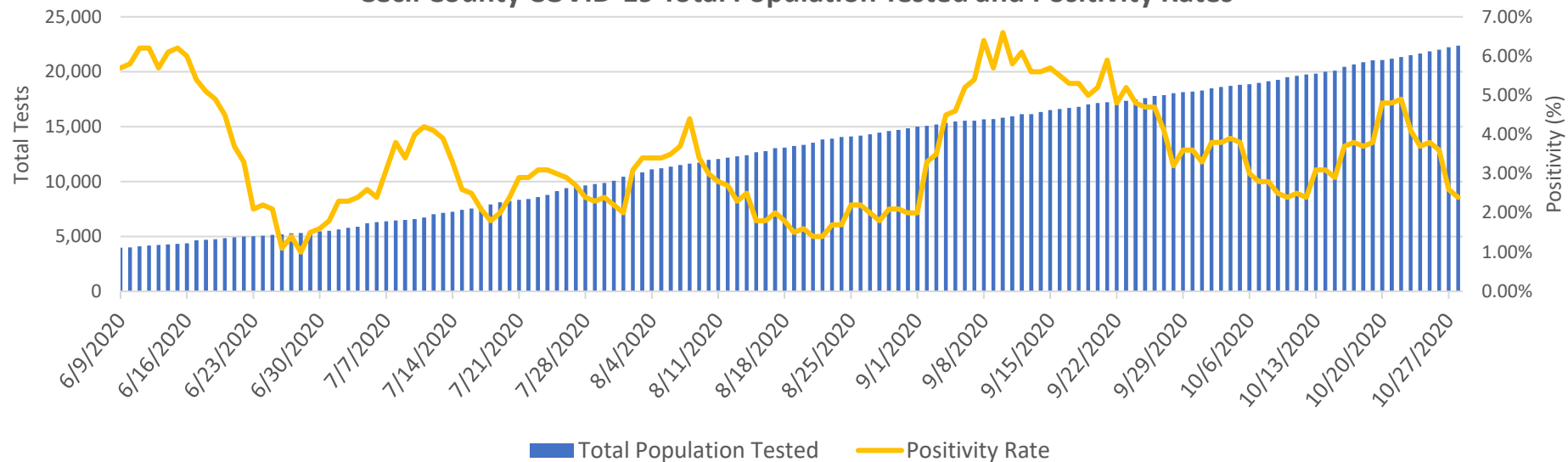


Zip codes	Cases
21901	174
21903	50
21904	65
21911	224
21912	42
21913	32
21915	30
21917	14
21918	44
21919	27
21921	652
21914	9
Unknown	16

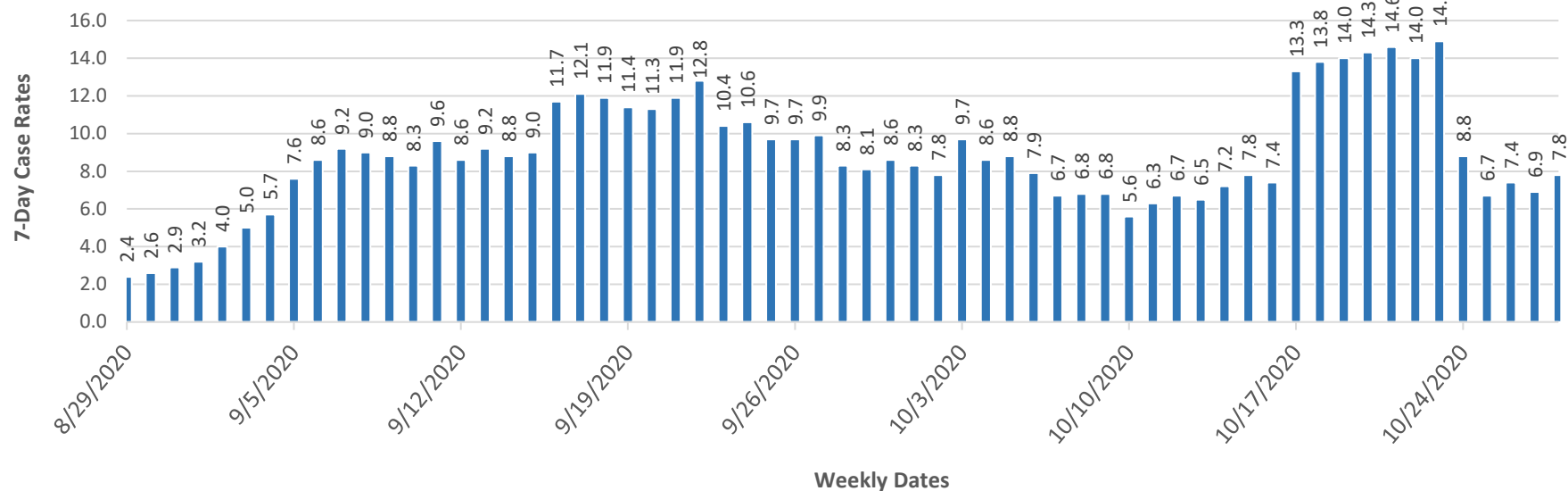
Note: zip codes with 7 or fewer cases are suppressed per MDH

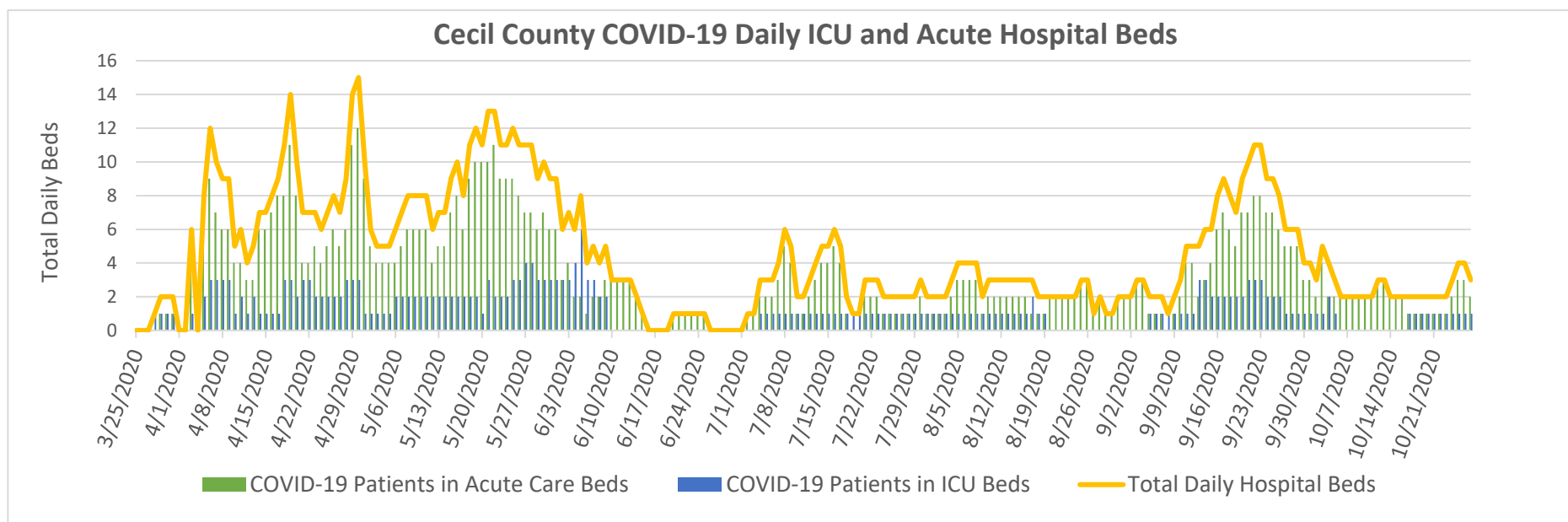


Cecil County COVID-19 Total Population Tested and Positivity Rates



Cecil County COVID-19 7-Day Case Rates





Data sources:

Cecil County Health Department COVID-19 Tracking Systems (CCHDC19TS)
 Maryland Department of Health (MDH)
 Maryland Department of Planning Services (MDPS)
 Chesapeake Regional Information Systems for our Patients (CRISP)
 CRISP-Maryland Institute for Emergency Medical Services Systems (MIEMSS)

Notes: Data in these charts show:

Confirmed cases by positive test result and result date on the daily basis since March 21, 2020;
 Deaths by the last activity date with a last status of close-deceased from COVID-19;
 Total daily beds as sums of daily ICU and acute beds for Union Hospital-Cecil County only; self-reported hospital data to MIEMSS reflect point in time counts;
 Zip codes with ≤ 7 cases will be suppressed according to MDH.

Jurisdiction - Cecil		Turn Around Time (days)	Turn Around Time (days)	Turn Around Time (days)
Reporting Facility	# of Unique ELRs	Median	25th Percentile	75th Percentile
MDPHL	3	2.0	2.0	2.0
UMMC Central Lab	68	2.0	2.0	2.0
Johns Hopkins Medical Laboratories	76	1.0	1.0	1.0
QUEST TETERBORO	81	3.0	2.0	3.0
STS Lab 2 LLC	98	3.0	2.0	3.0
Curative DC	123	2.0	1.0	2.0
AHALABS	146	3.0	3.0	3.0
GENETIC TECHNOLOGICAL INNOVATIONS	160	4.0	4.0	4.0
Mako Medical Laboratories	181	4.0	3.0	4.0
Cian Diagnostics	294	3.0	3.0	3.0
LABCORP	509	2.0	2.0	3.0
Total	2046	3.0	2.0	3.0

From ELRs received: 10/19/2020-10/25/2020

Total is summary of all tests/labs - not just the high volume labs.

Turn around time is the difference in reported date of collection and date reported to public health. Note that this includes time specimens that are held at a collecting location and transit time to the lab. Therefore, it is not solely a marker of capacity and response at a lab.