



HEALTHY people . HEALTHY community. HEALTHY future.

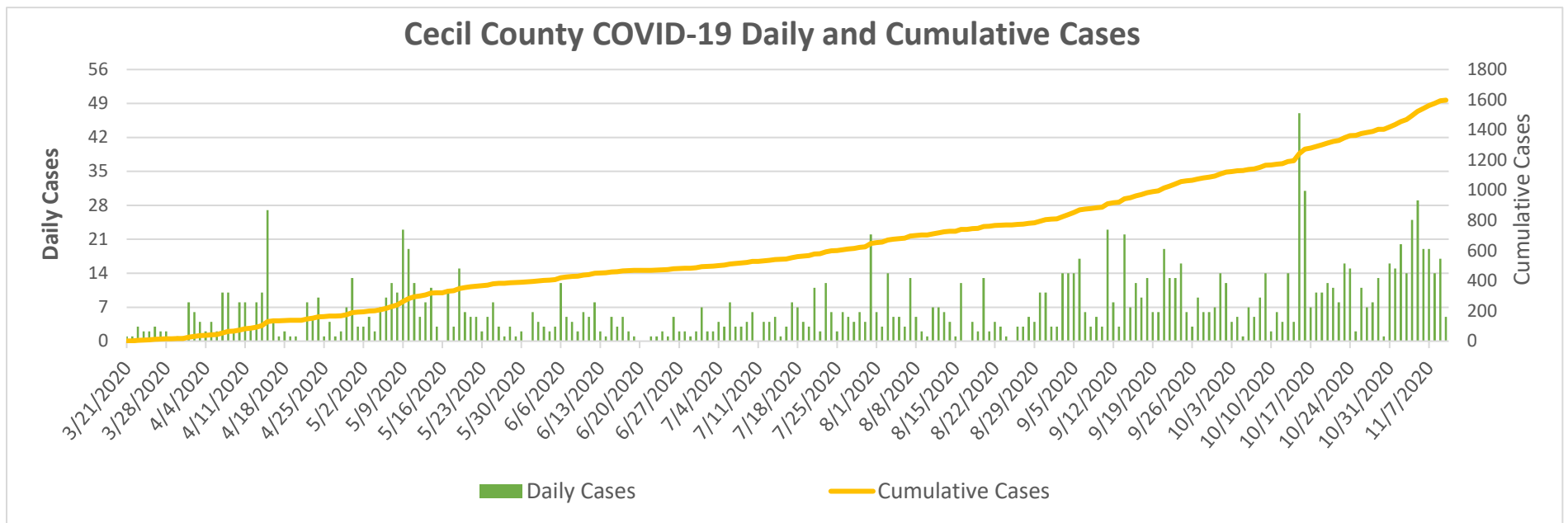
JOHN M. BYERS HEALTH CENTER  
401 BOW ST., ELKTON, MD 21921  
Tel.: 410-996-5550  
[www.cecilcountyhealth.org](http://www.cecilcountyhealth.org)  
[info@cecilcountyhealth.org](mailto:info@cecilcountyhealth.org)

## Cecil County COVID-19 Weekly Reports

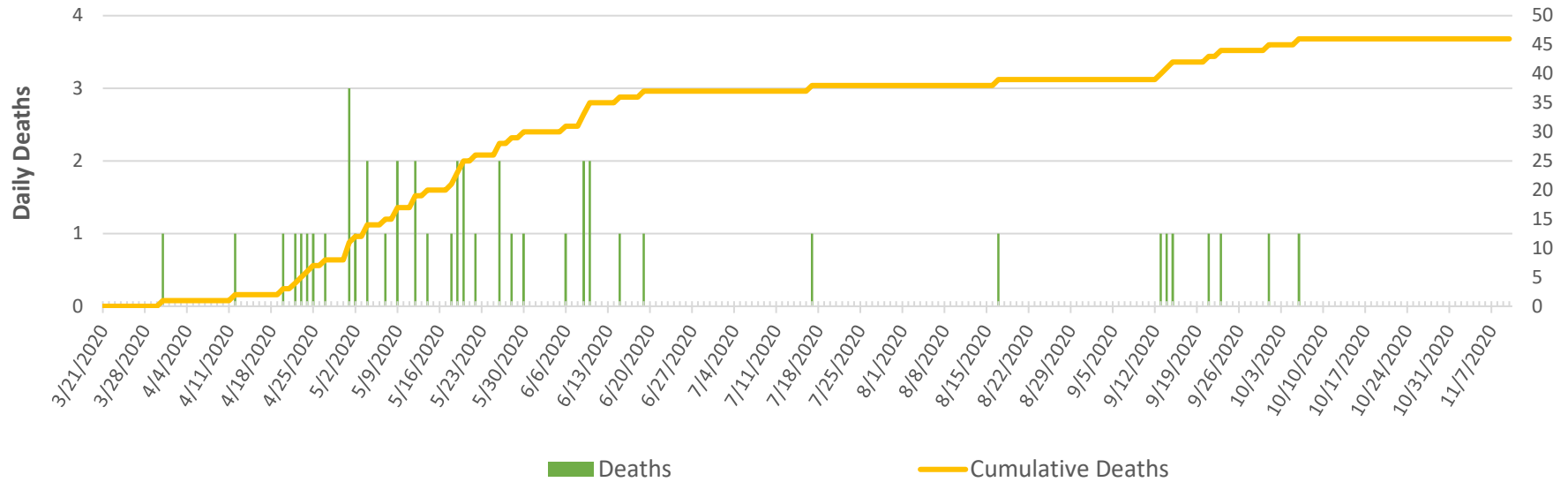
Number of Confirmed Cases	1,597
Number of Confirmed Deaths	46
Released from Isolation	1,241

Updated:

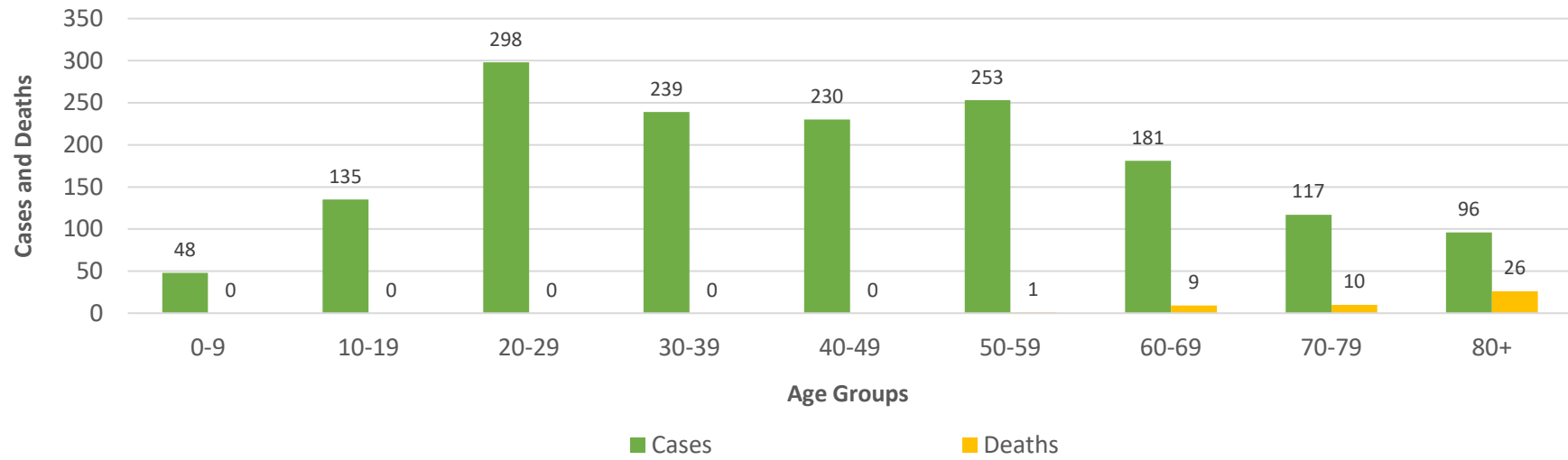
November 10, 2020



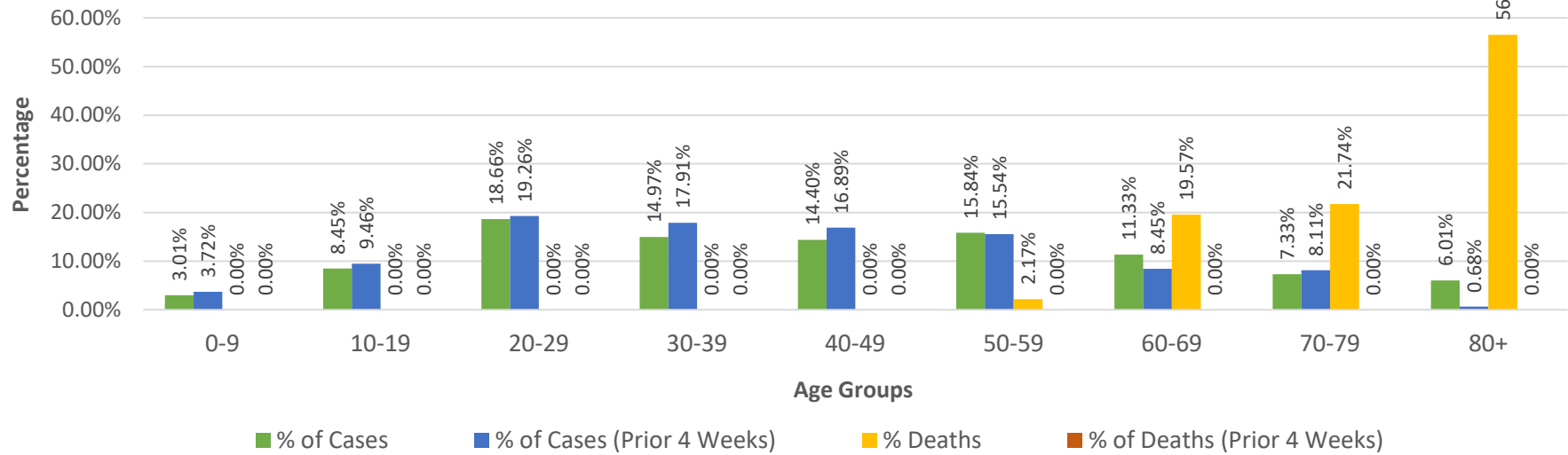
### Cecil County COVID-19 Daily and Cumulative Deaths



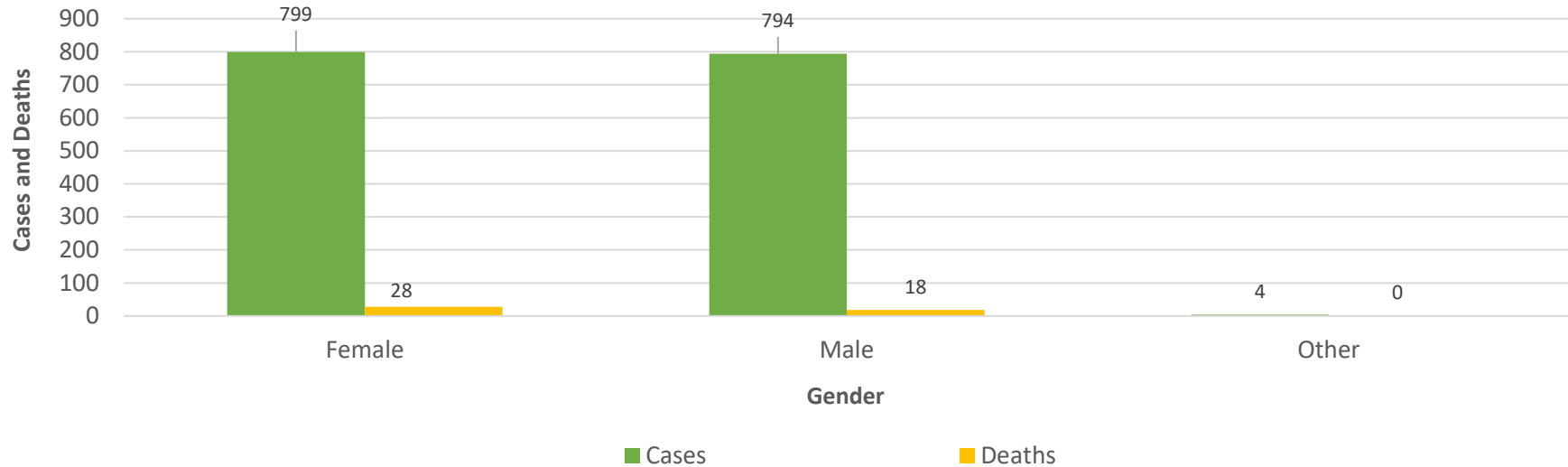
### Cecil County COVID-19 Cases and Deaths by Age Groups

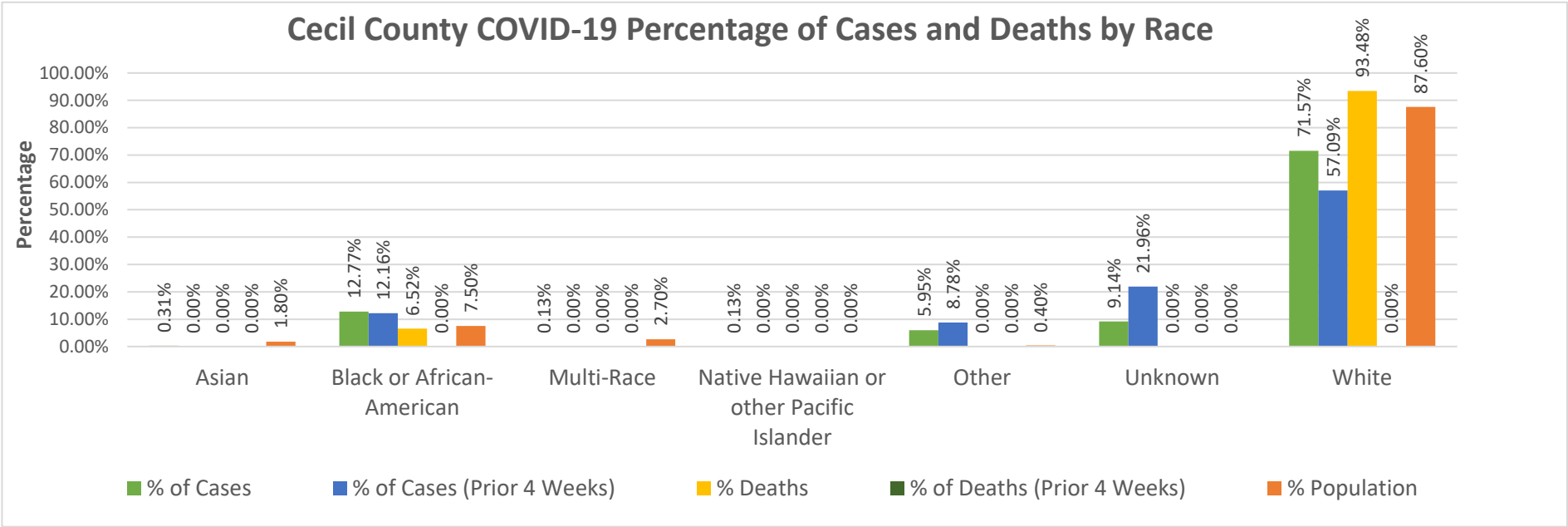
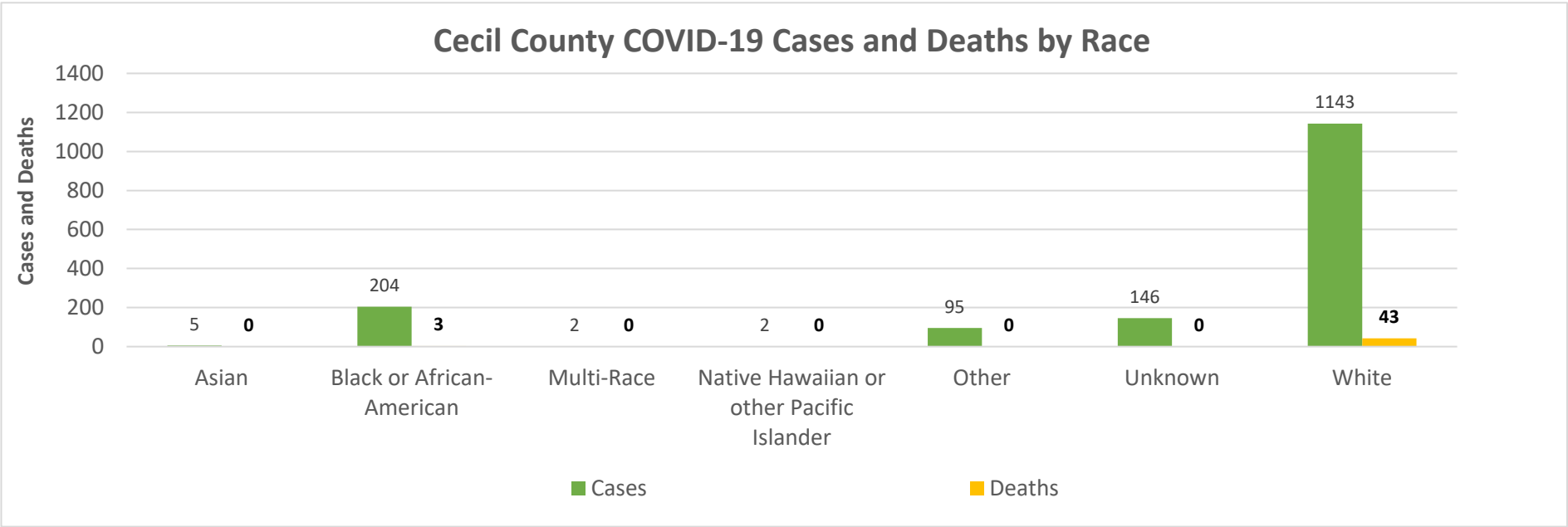


### Cecil County COVID-19 Percentage of Cases and Deaths by Age Groups

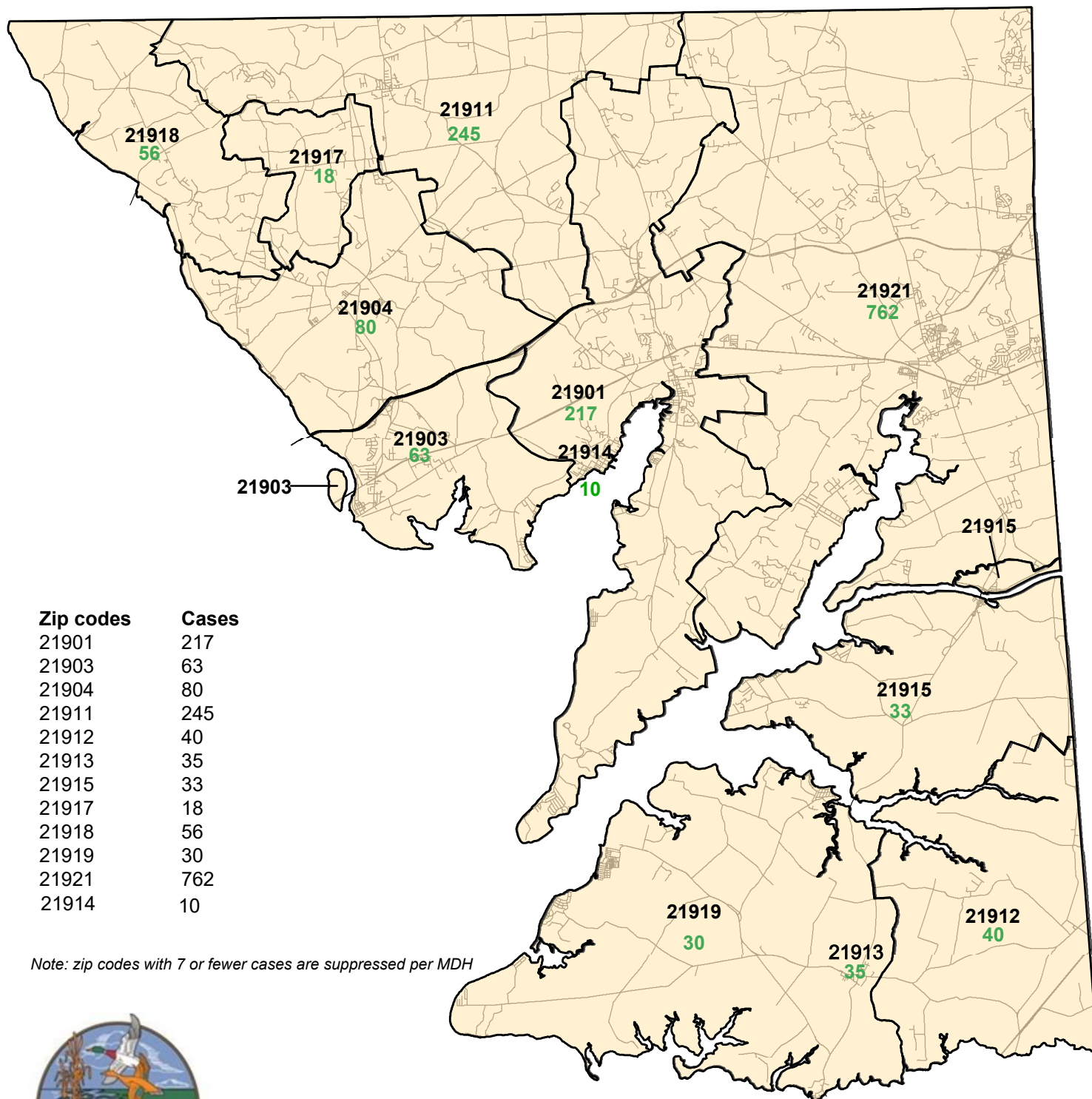


### Cecil County COVID-19 Cases and Deaths by Gender





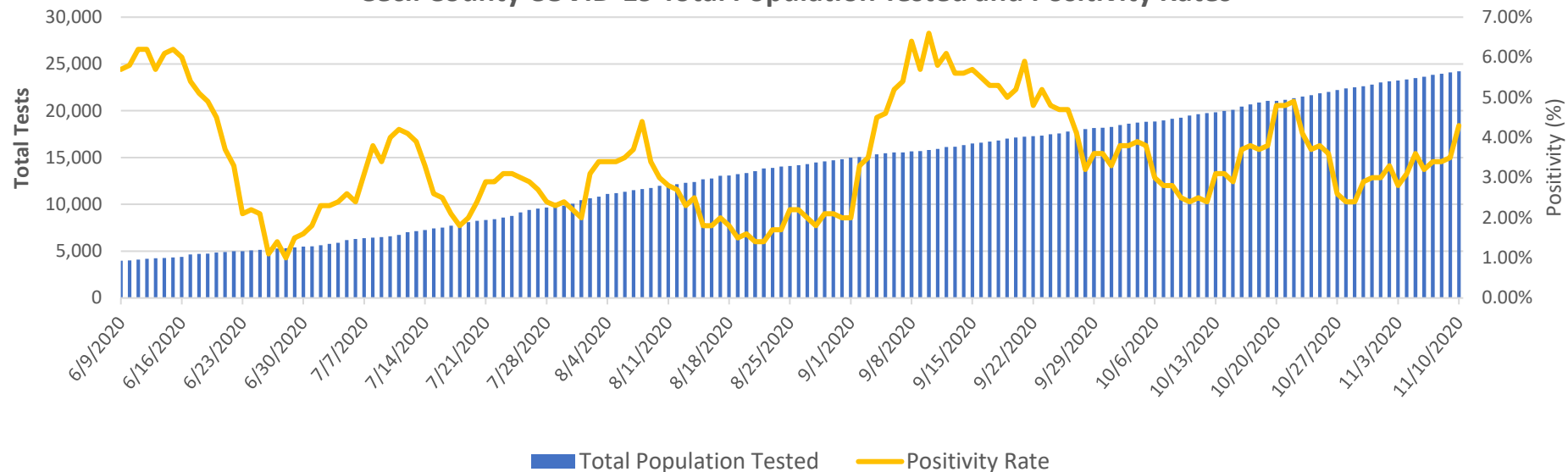
## Cecil County COVID-19 Cases by Zip Codes as of 11/10/2020



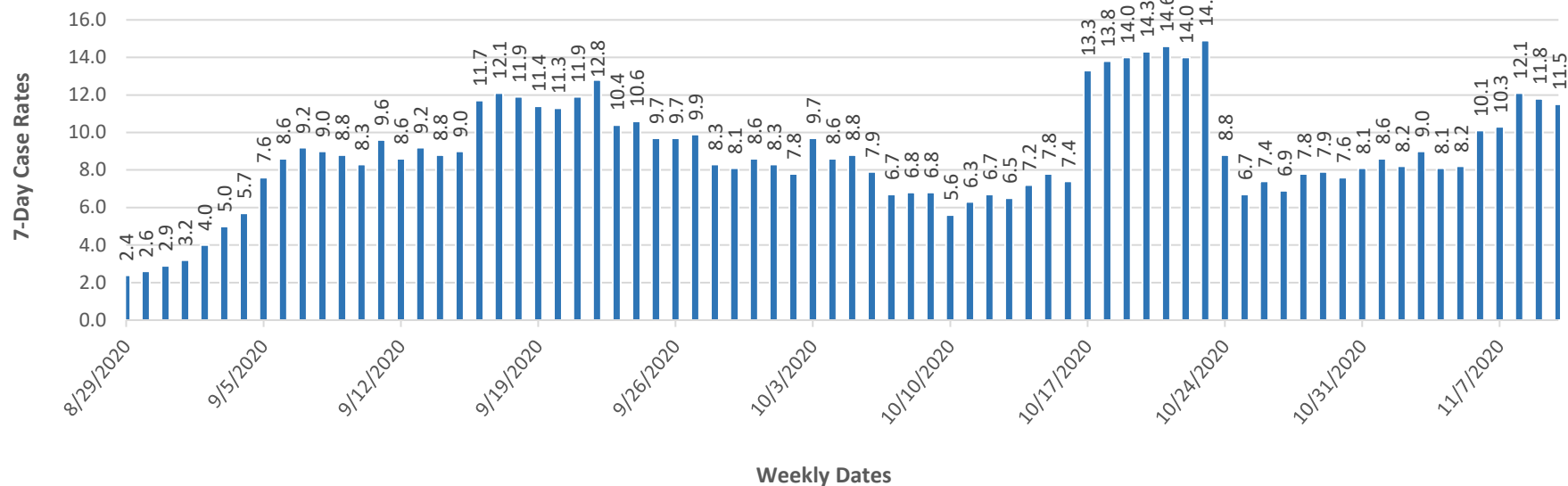
Note: zip codes with 7 or fewer cases are suppressed per MDH

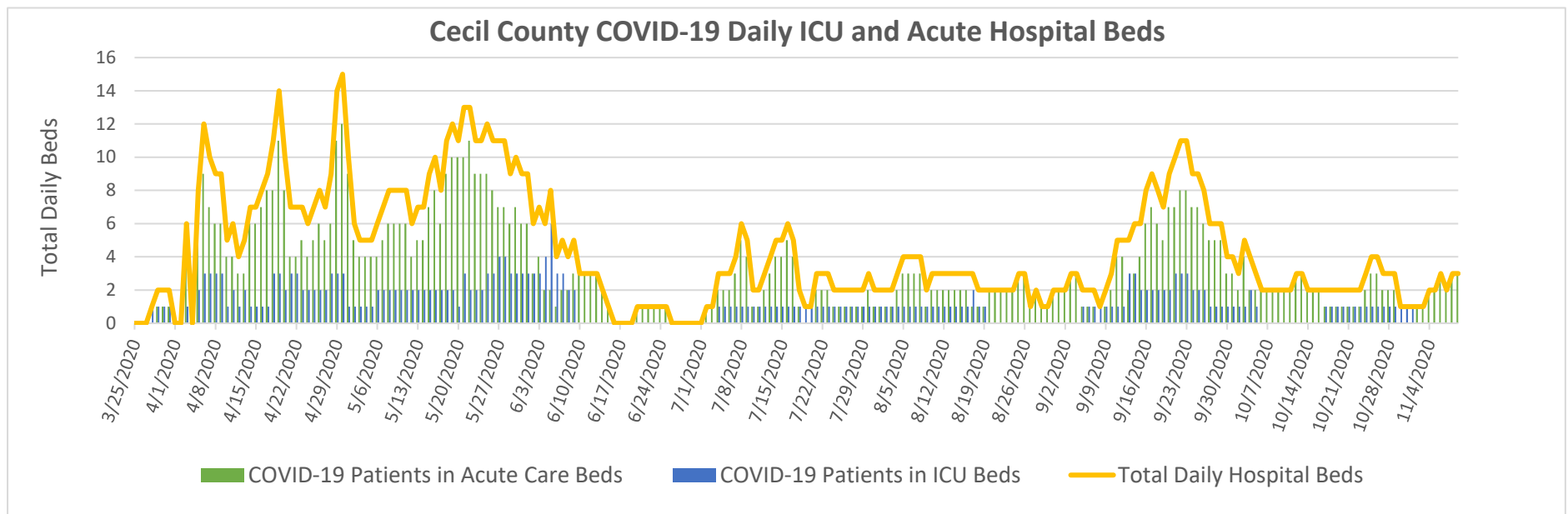


### Cecil County COVID-19 Total Population Tested and Positivity Rates



### Cecil County COVID-19 7-Day Case Rates





**Data sources:**

Cecil County Health Department COVID-19 Tracking Systems (CCHDC19TS)  
 Maryland Department of Health (MDH)  
 Maryland Department of Planning Services (MDPS)  
 Chesapeake Regional Information Systems for our Patients (CRISP)  
 Maryland Institute for Emergency Medical Services Systems (MIEMSS)  
 United States Census Bureau-American Community Survey

**Notes: Data in these charts show:**

Confirmed cases by positive test result and result date on the daily basis since March 21, 2020;  
 Deaths by the last activity date with a last status of close-deceased from COVID-19;  
 Total daily beds as sums of daily ICU & acute beds for Union Hospital-Cecil County only;  
 Hospitalization data as self-reported cases to MIEMSS that reflected point in time counts;  
 Zip codes with  $\leq 7$  cases will be suppressed according to MDH.

Jurisdiction - Cecil	# of Unique ELRs	Turn Around Time (days)	Turn Around Time (days)	Turn Around Time (days)
Reporting Facility		Median	25th Percentile	75th Percentile
UMMC Central Lab	57	1.0	1.0	2.0
QUEST TETERBORO	59	3.0	2.0	4.0
Mako Medical Laboratories	87	4.0	3.0	5.0
MDPHL	94	2.0	2.0	2.0
STS Lab 2 LLC	165	2.0	2.0	3.0
AHALABS	215	3.0	3.0	4.0
Curative DC	246	1.0	1.0	2.0
GENETIC TECHNOLOGICAL INNOVATIONS	253	3.0	3.0	4.0
Cian Diagnostics	396	4.0	4.0	4.0
LABCORP	575	2.0	2.0	3.0
Total	2560	3.0	2.0	4.0

From ELRs received: 11/2/2020-11/8/2020

Total is summary of all tests/labs - not just the high volume labs.

Turn around time is the difference in reported date of collection and date reported to public health. Note that this includes time specimens that are held at a collecting location and transit time to the lab. Therefore, it is not solely a marker of capacity and response at a lab.