



HEALTHY people . HEALTHY community. HEALTHY future.

LAUREN LEVY, JD, MPH, HEALTH OFFICER

JOHN M. BYERS HEALTH CENTER

401 BOW ST., ELKTON, MD 21921

Tel.: 410-996-5550

www.cecilcountyhealth.org

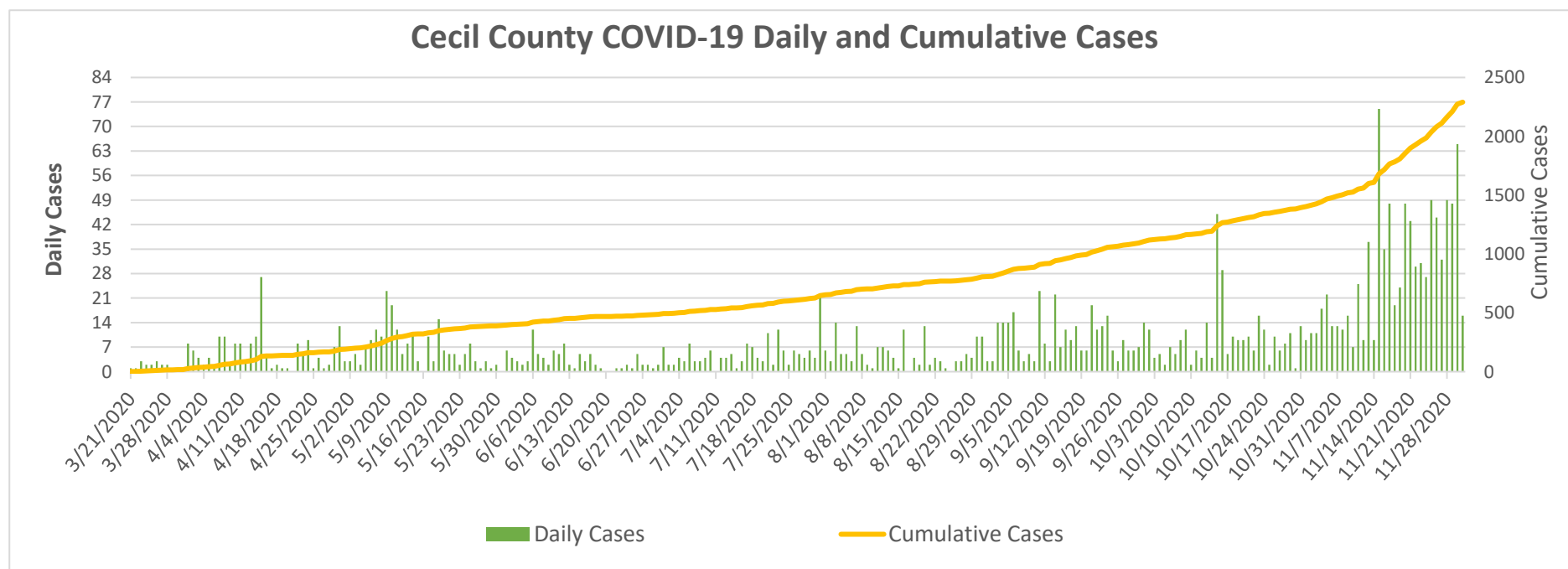
info@cecilcountyhealth.org

Cecil County COVID-19 Weekly Reports

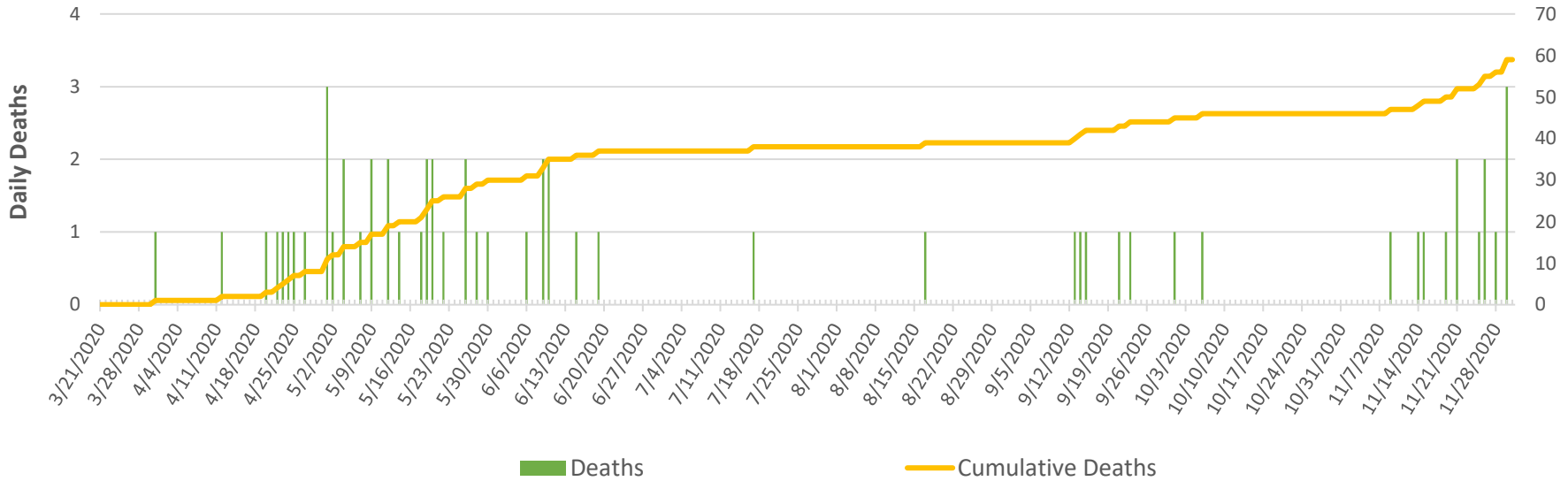
Number of Confirmed Cases	2,290
Number of Confirmed Deaths	59
Released from Isolation	1,511

Data as of:

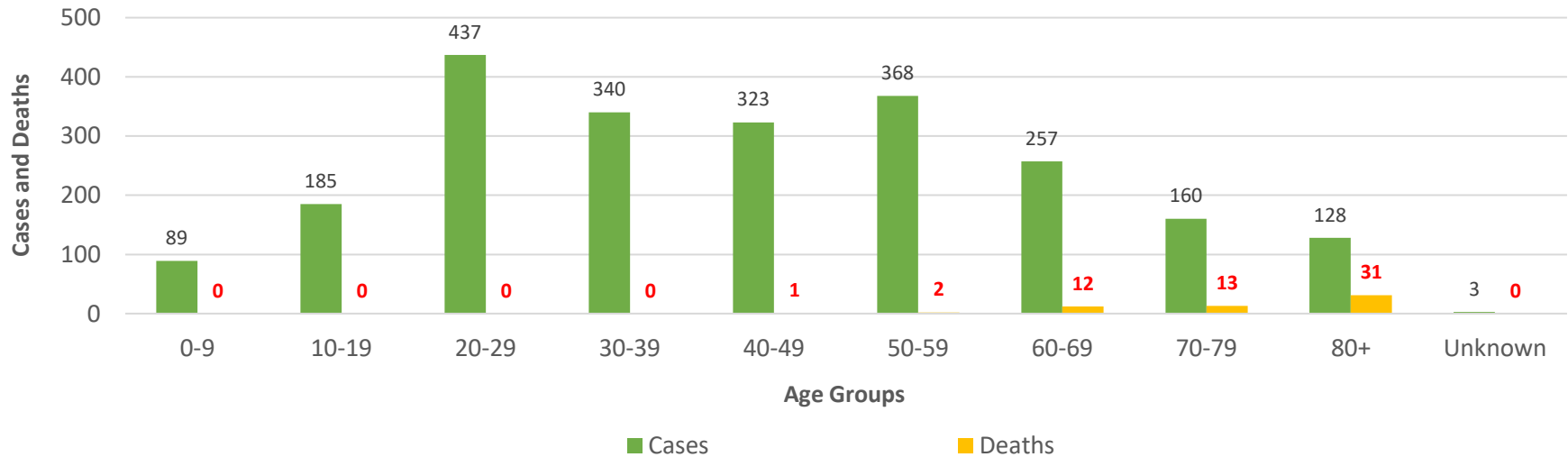
Tuesday, December 1, 2020



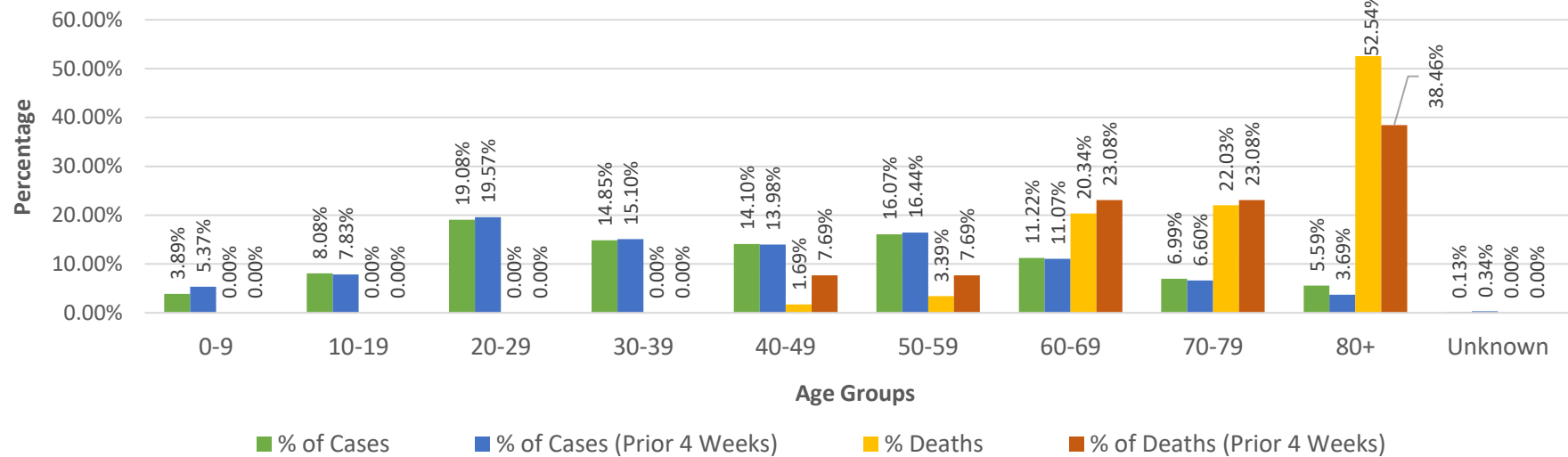
Cecil County COVID-19 Daily and Cumulative Deaths



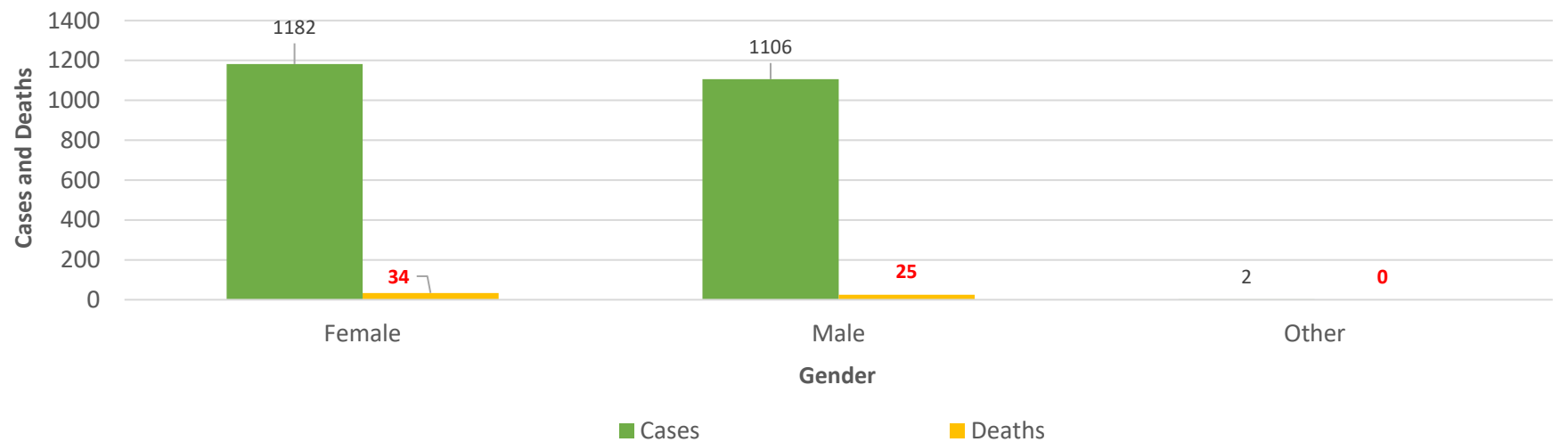
Cecil County COVID-19 Cases and Deaths by Age Groups



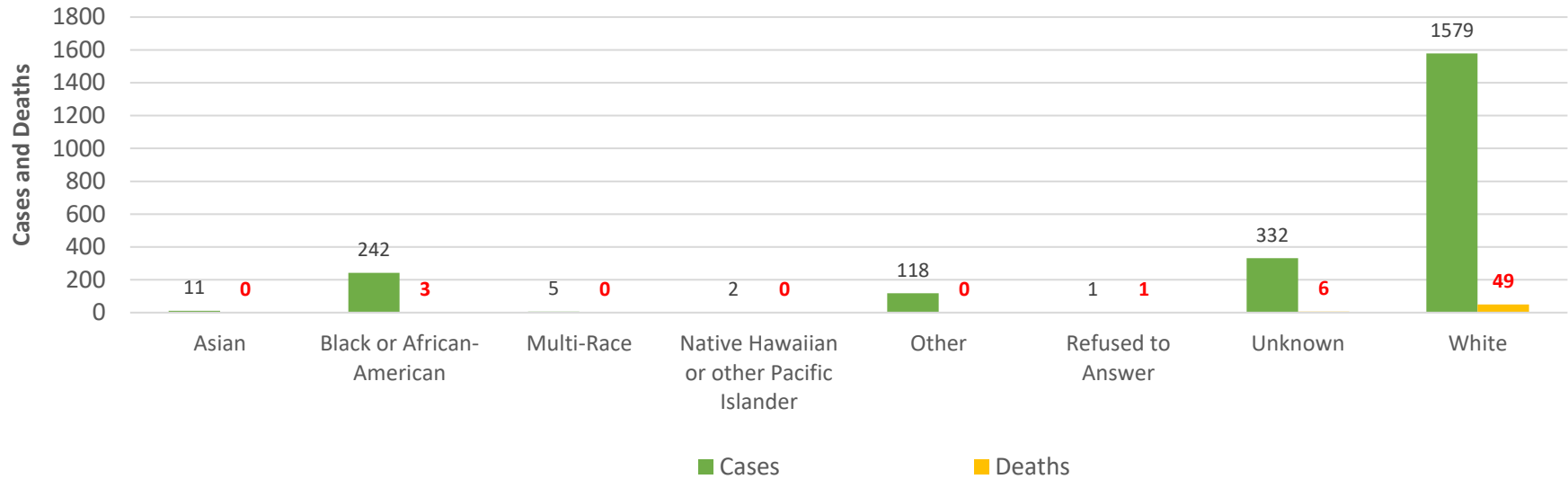
Cecil County COVID-19 Percentage of Cases and Deaths by Age Groups



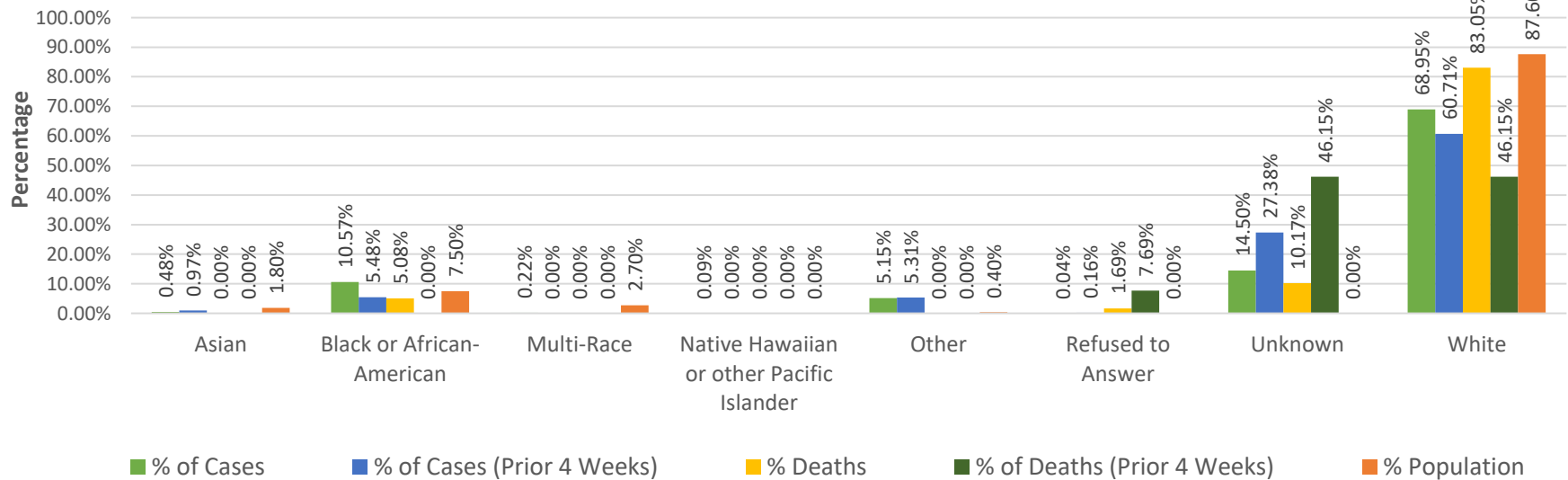
Cecil County COVID-19 Cases and Deaths by Gender



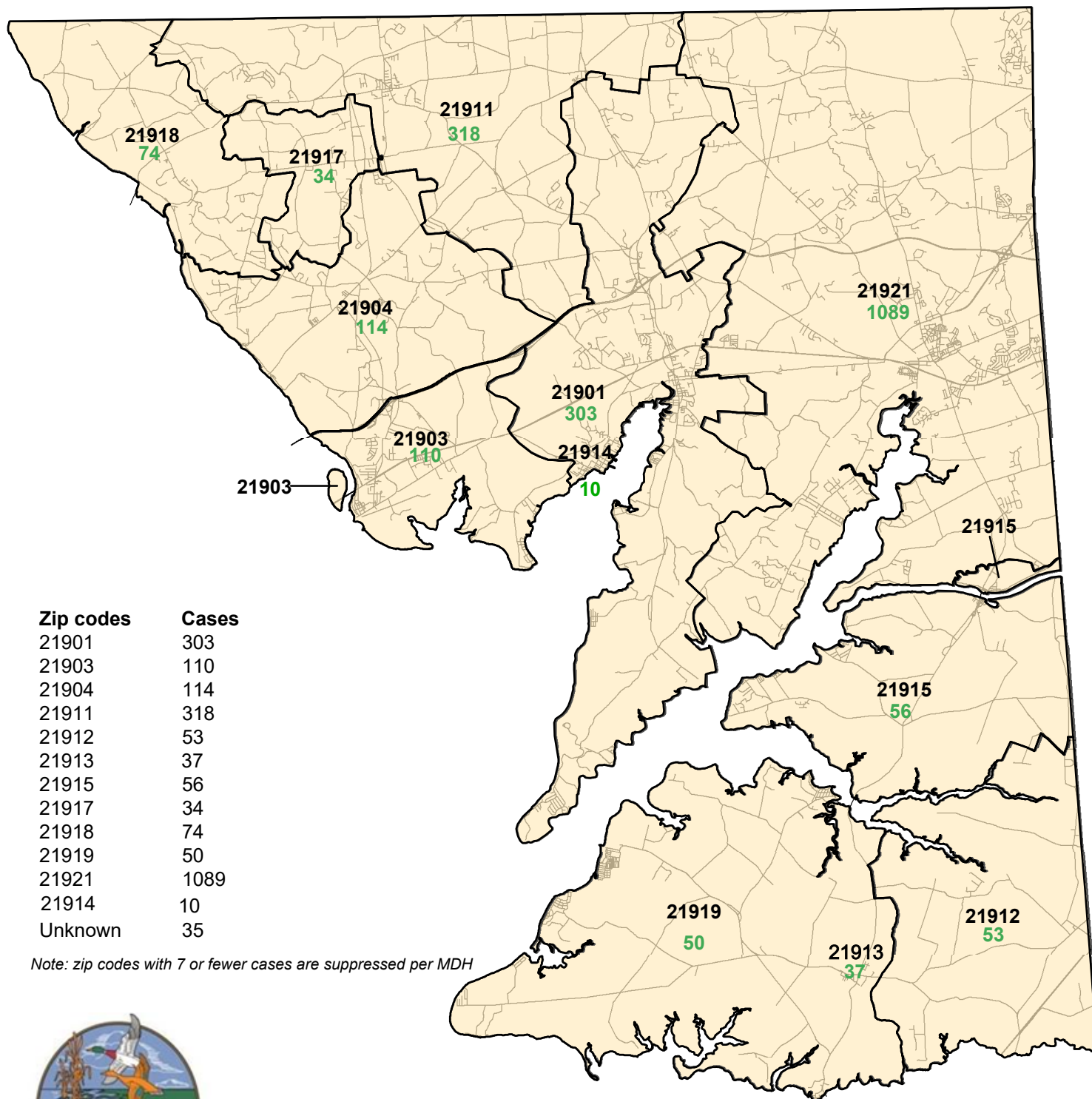
Cecil County COVID-19 Cases and Deaths by Race



Cecil County COVID-19 Percentage of Cases and Deaths by Race



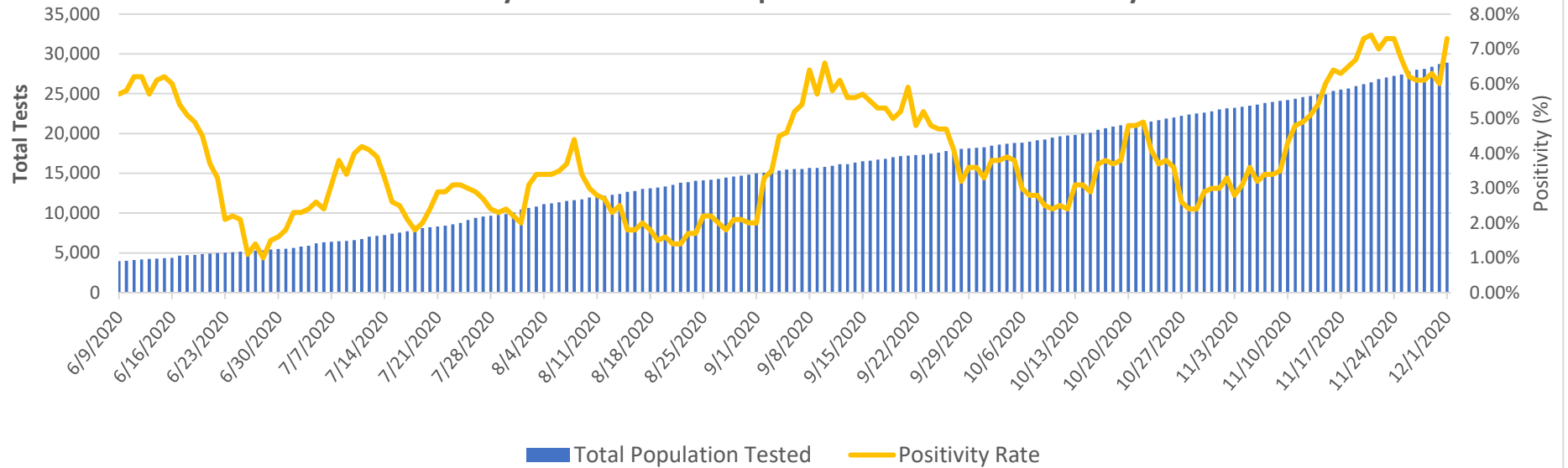
Cecil County COVID-19 Cases by Zip Codes as of 12/01/2020



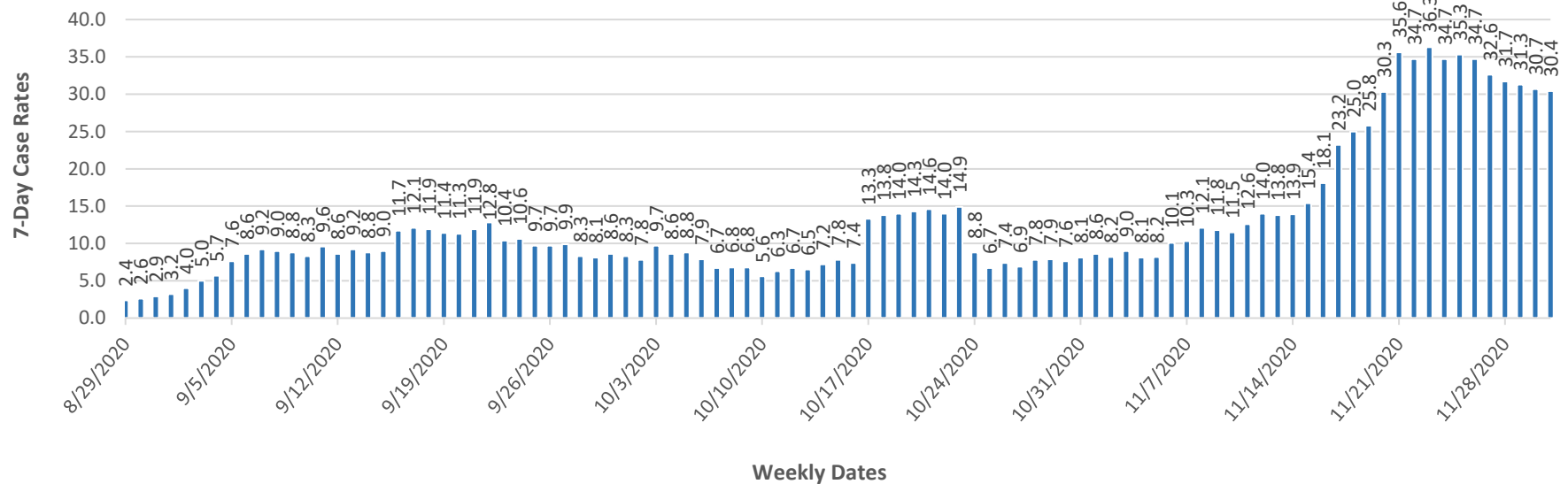
Note: zip codes with 7 or fewer cases are suppressed per MDH

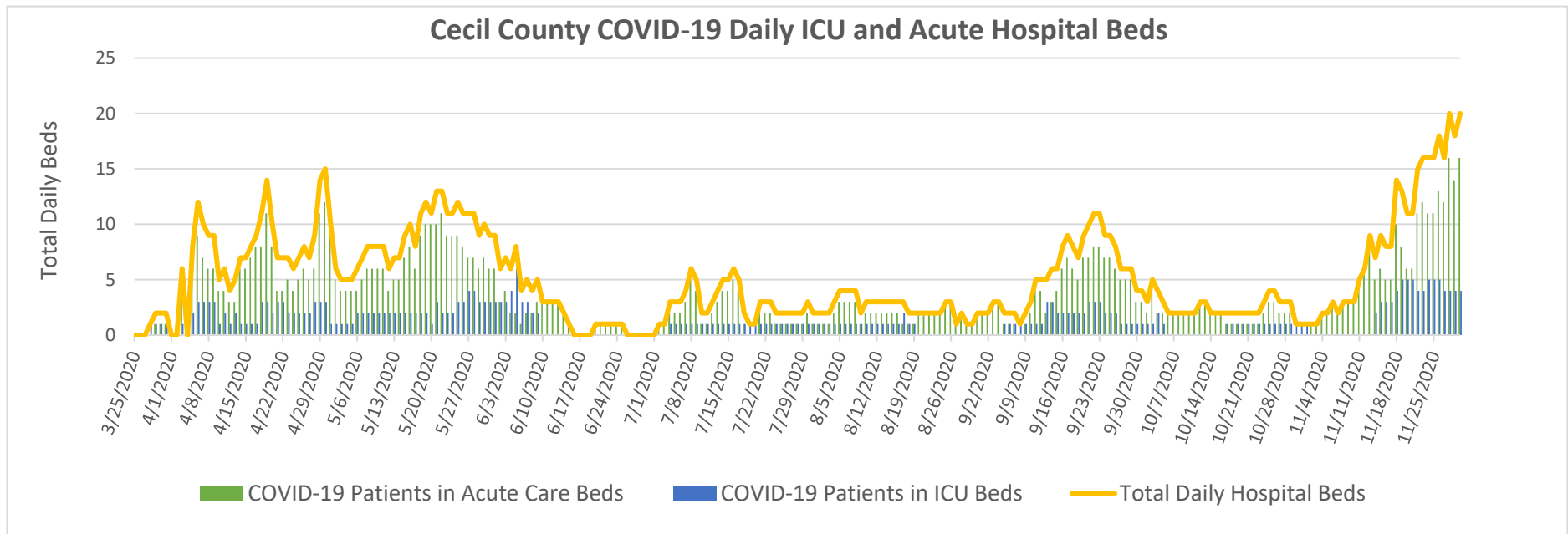


Cecil County COVID-19 Total Population Tested and Positivity Rates



Cecil County COVID-19 Seven-Day Case Rates





Data sources:

Cecil County Health Department COVID-19 Tracking Systems (CCHDC19TS)

Maryland Department of Health (MDH)

Maryland Department of Planning Services (MDPS)

Chesapeake Regional Information Systems for our Patients (CRISP)

Maryland Institute for Emergency Medical Services Systems (MIEMSS)

United States Census Bureau-American Community Survey

Notes: Data in these charts show:

Confirmed cases measured by positive test result and result date on the daily basis since March 21, 2020;

Deaths by the last activity date with a last status of close-deceased from COVID-19;

Total daily beds as sums of daily ICU & acute beds for Union Hospital-Cecil County only;

Hospitalization data as self-reported cases to MIEMSS that reflected point in time counts;

Zip codes with ≤ 7 cases are suppressed according to MDH;

Previous 4-week period: 11/03/20 - 12/01/20.

Jurisdiction - Cecil	# of Unique ELRs	Turn Around Time (days)	Turn Around Time (days)	Turn Around Time (days)
Reporting Facility		Median	25th Percentile	75th Percentile
MDPHL	37	3.0	2.0	4.0
QUEST TETERBORO	81	3.0	3.0	4.0
GENETWORX	85	2.0	2.0	2.0
STS Lab 2 LLC	144	3.0	2.0	4.0
GENETIC TECHNOLOGICAL INNOVATIONS	158	4.0	3.0	5.0
Calvert Manor Healthcare	181	2.0	1.0	2.0
AHALABS	210	4.0	3.0	4.0
Cian Diagnostics	339	7.0	6.0	7.0
Curative DC	456	2.0	2.0	3.0
Mako Medical Laboratories	701	4.0	4.0	5.0
LABCORP	918	3.0	2.0	3.0
Total	3750	3.0	2.0	4.0

From ELRs received: 11/23/2020-11/29/2020

Total is summary of all tests/labs - not just the high volume labs.

Turn around time is the difference in reported date of collection and date reported to public health. Note that this includes time specimens that are held at a collecting location and transit time to the lab. Therefore, it is not solely a marker of capacity and response at a lab.