



HEALTHY people . HEALTHY community. HEALTHY future.

LAUREN LEVY, JD, MPH, HEALTH OFFICER

JOHN M. BYERS HEALTH CENTER

401 BOW ST., ELKTON, MD 21921

Tel.: 410-996-5550

[www.cecilcountyhealth.org](http://www.cecilcountyhealth.org)

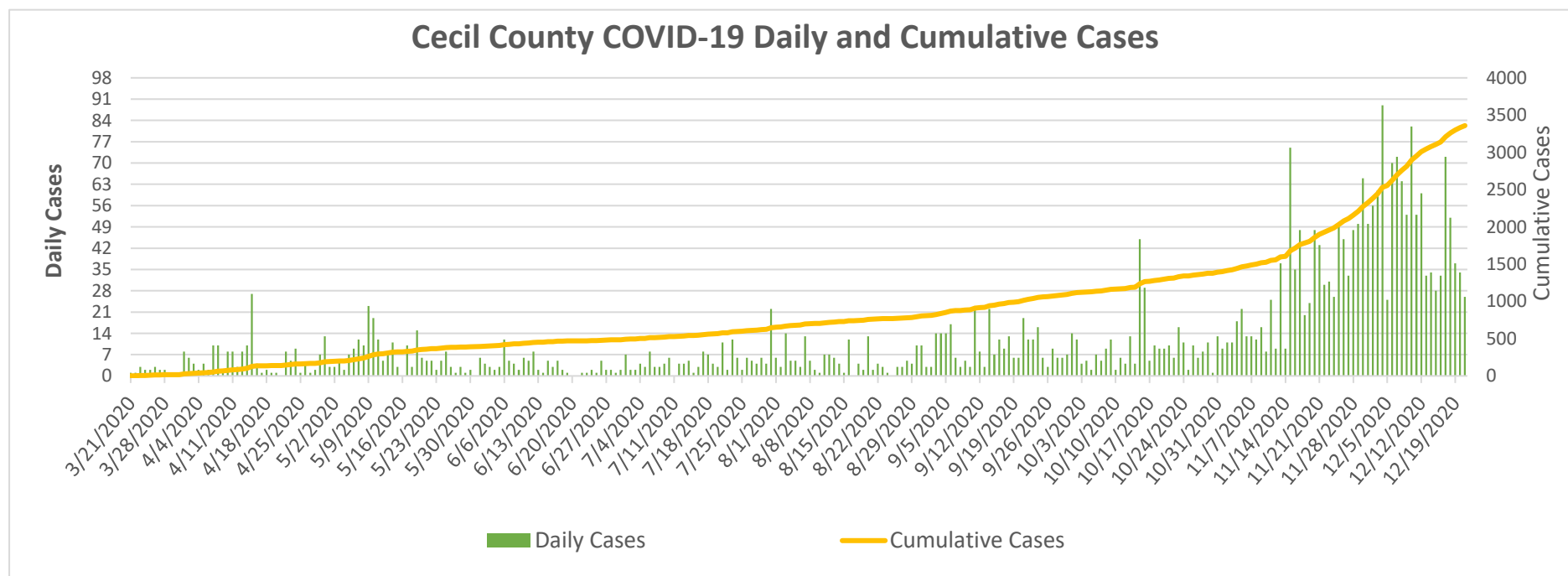
[info@cecilcountyhealth.org](mailto:info@cecilcountyhealth.org)

## Cecil County COVID-19 Weekly Reports

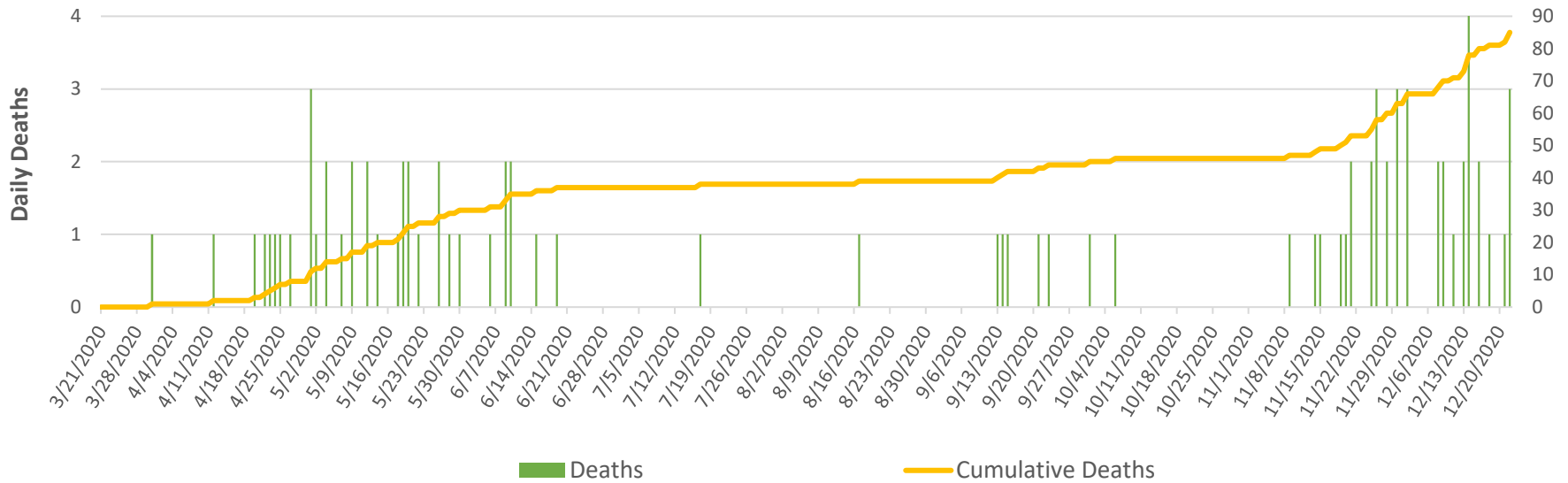
Number of Confirmed Cases	3,359
Number of Confirmed Deaths	85
Released from Isolation	2,807

Data as of:

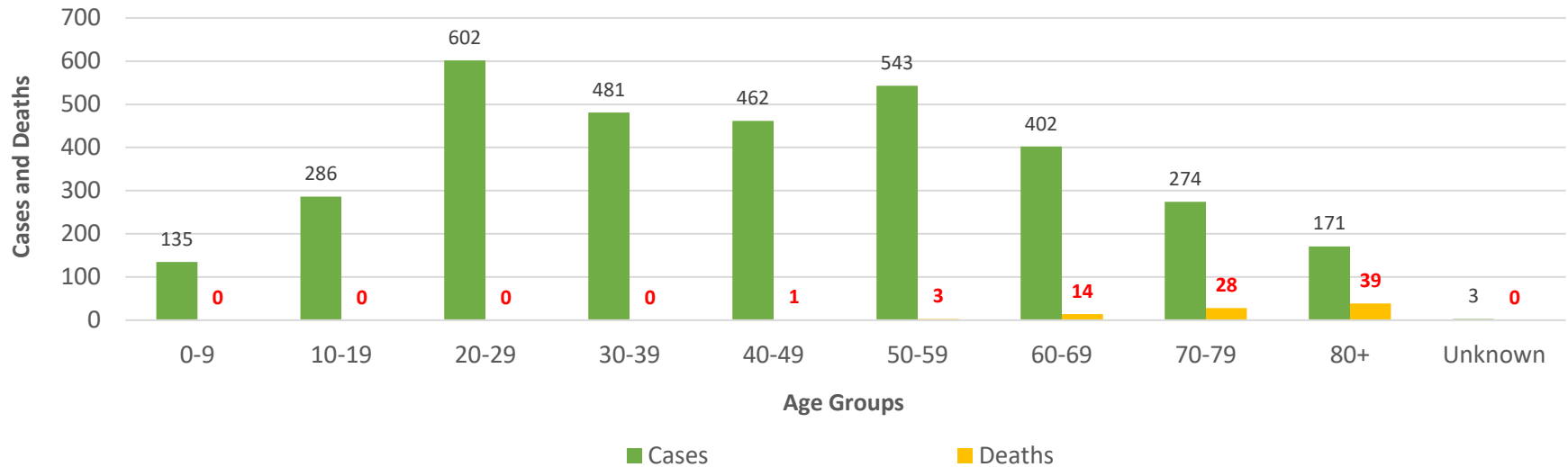
Tuesday, December 22, 2020



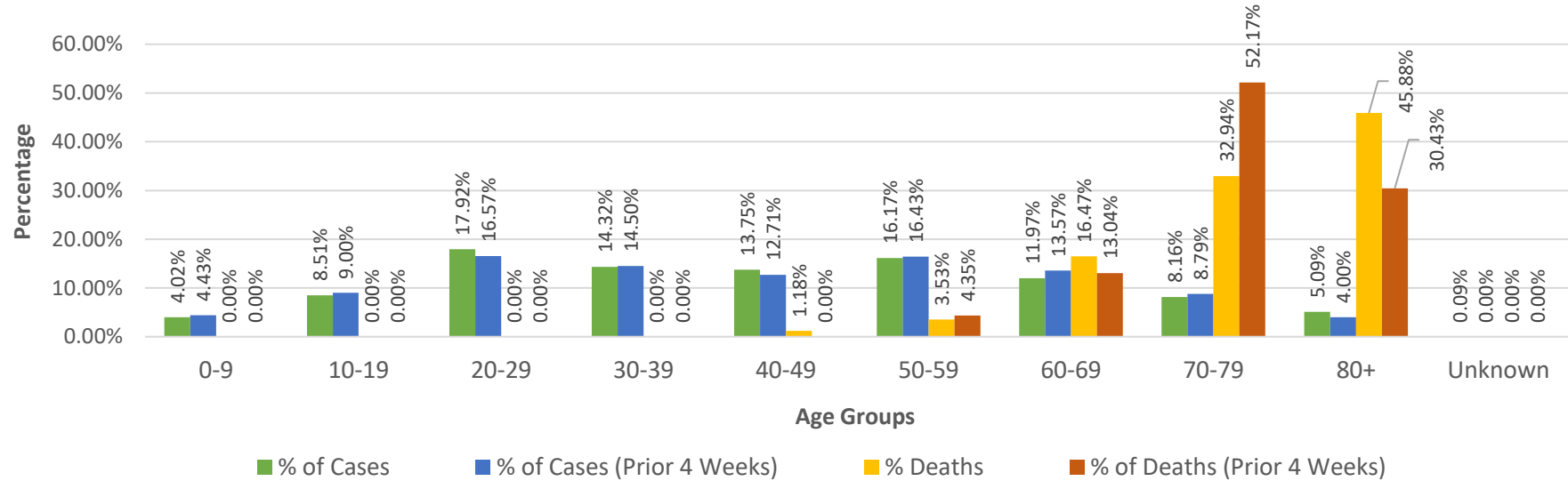
### Cecil County COVID-19 Daily and Cumulative Deaths



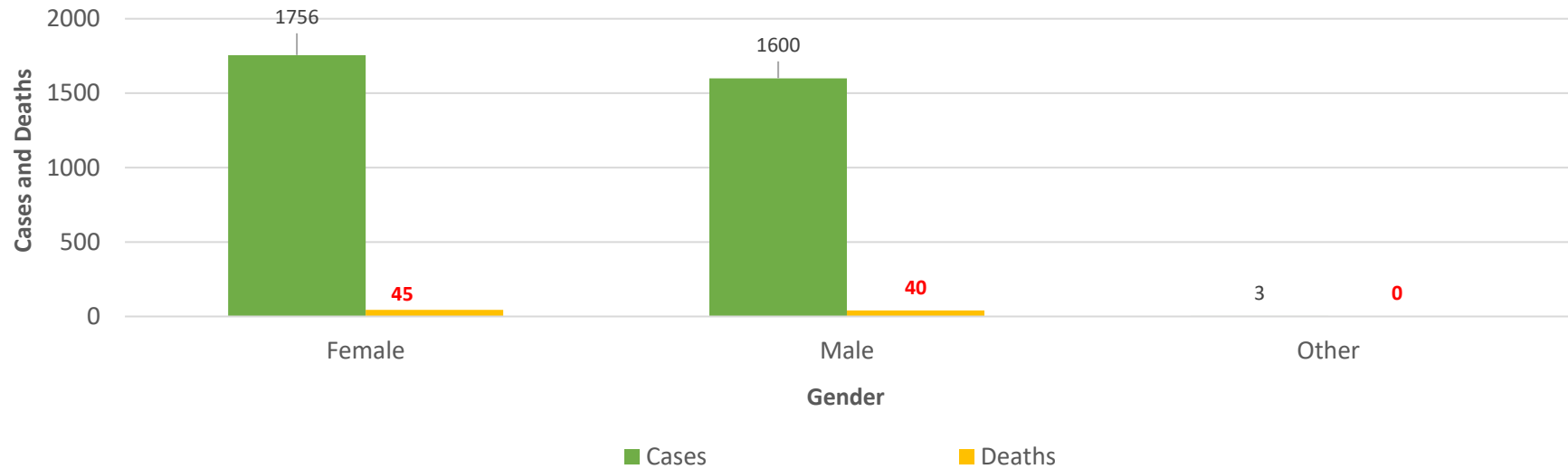
### Cecil County COVID-19 Cases and Deaths by Age Groups



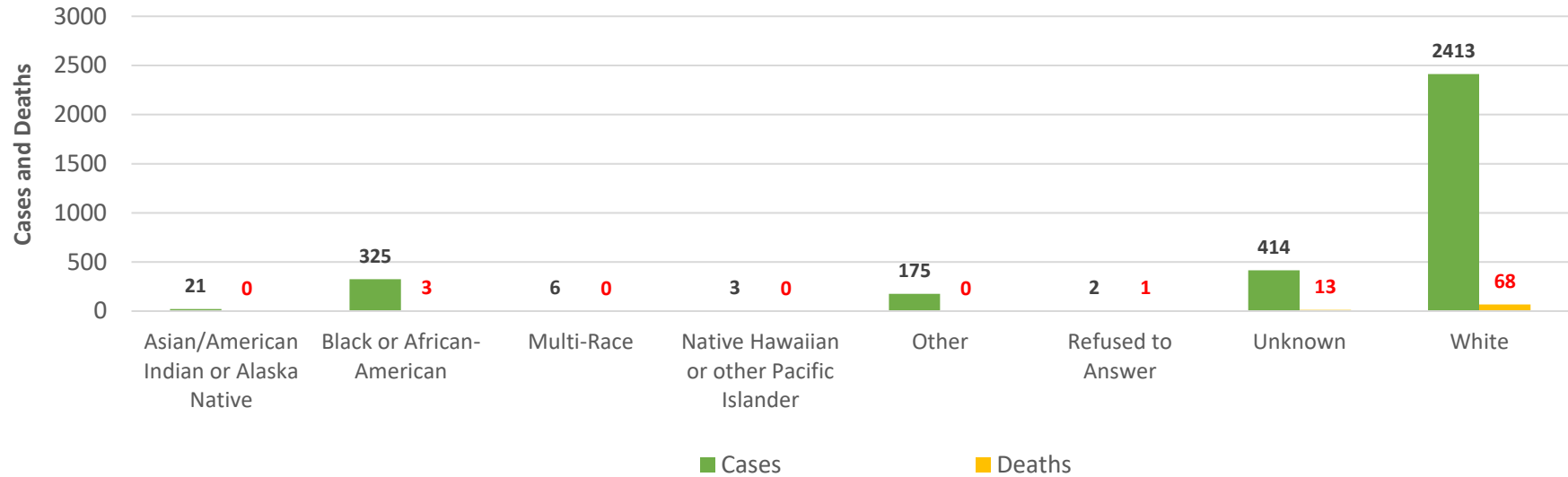
## Cecil County COVID-19 Percentage of Cases and Deaths by Age Groups



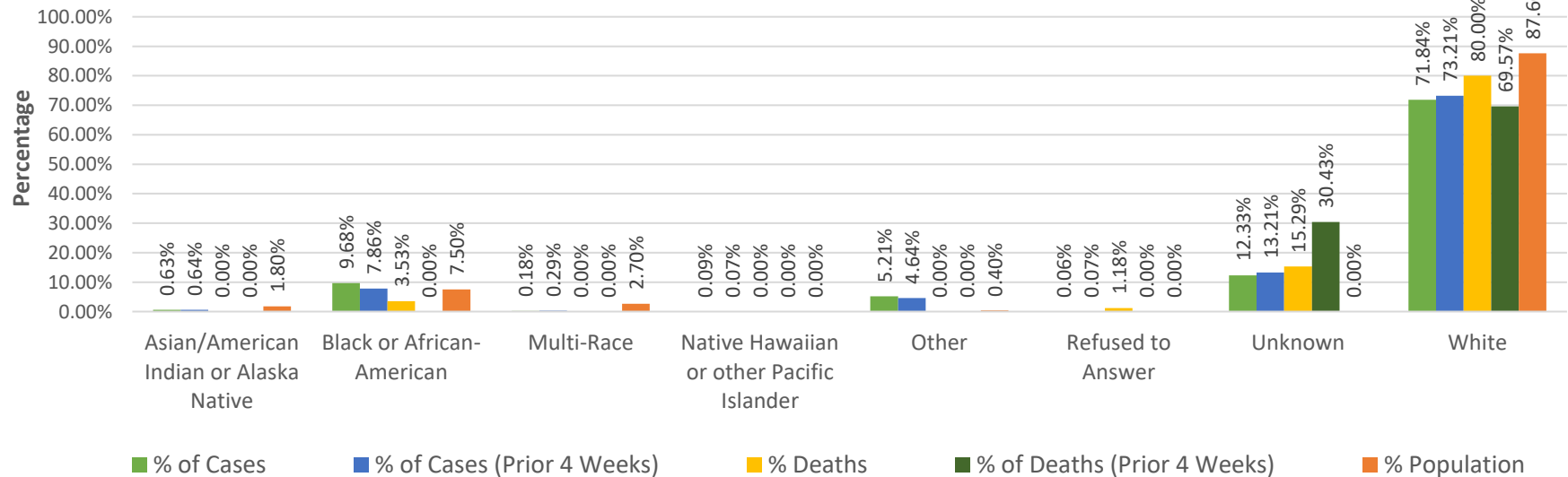
## Cecil County COVID-19 Cases and Deaths by Gender



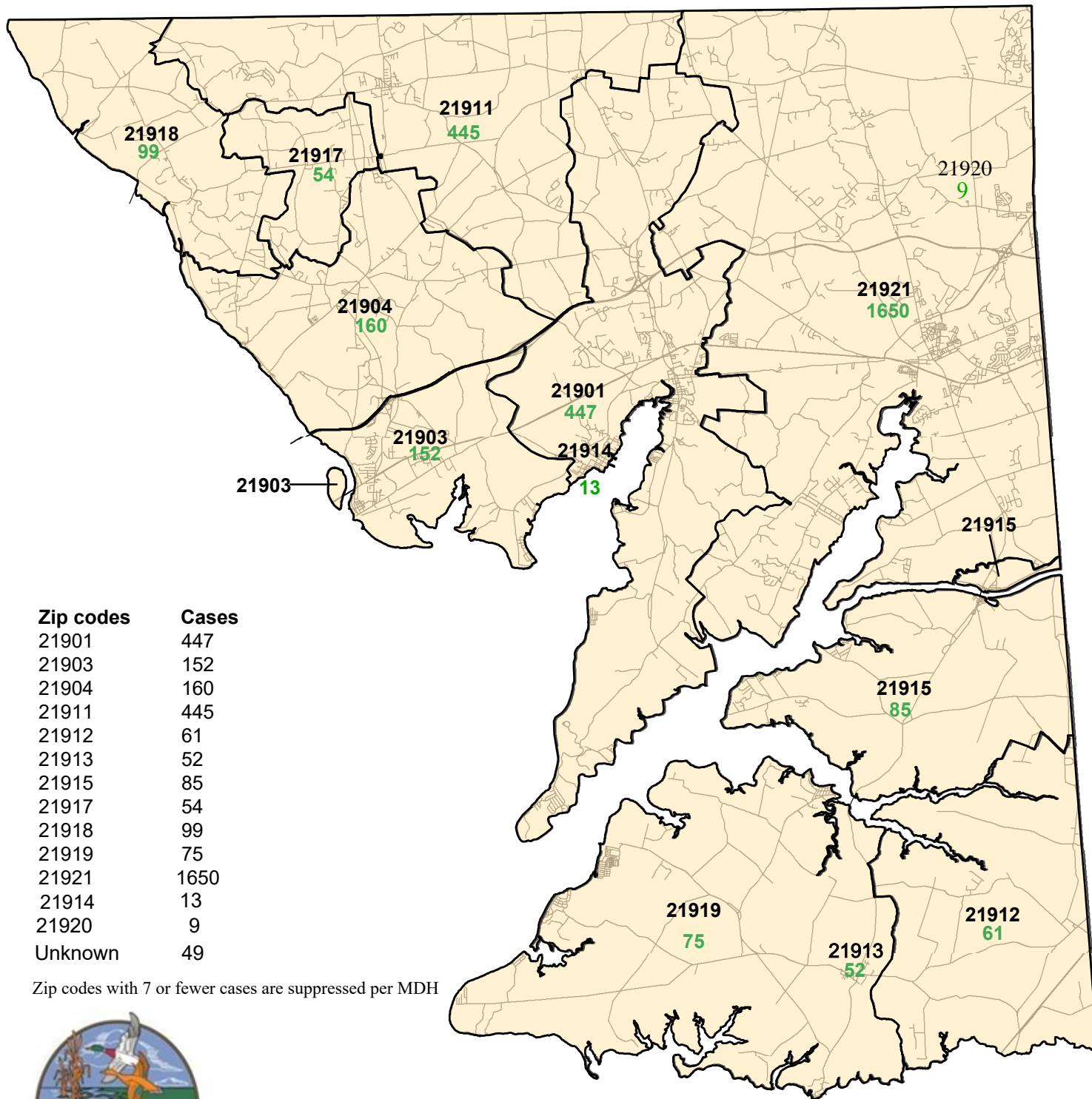
### Cecil County COVID-19 Cases and Deaths by Race



### Cecil County COVID-19 Percentage of Cases and Deaths by Race



# Cecil County COVID-19 Cases by Zip Codes as of 12/22/2020

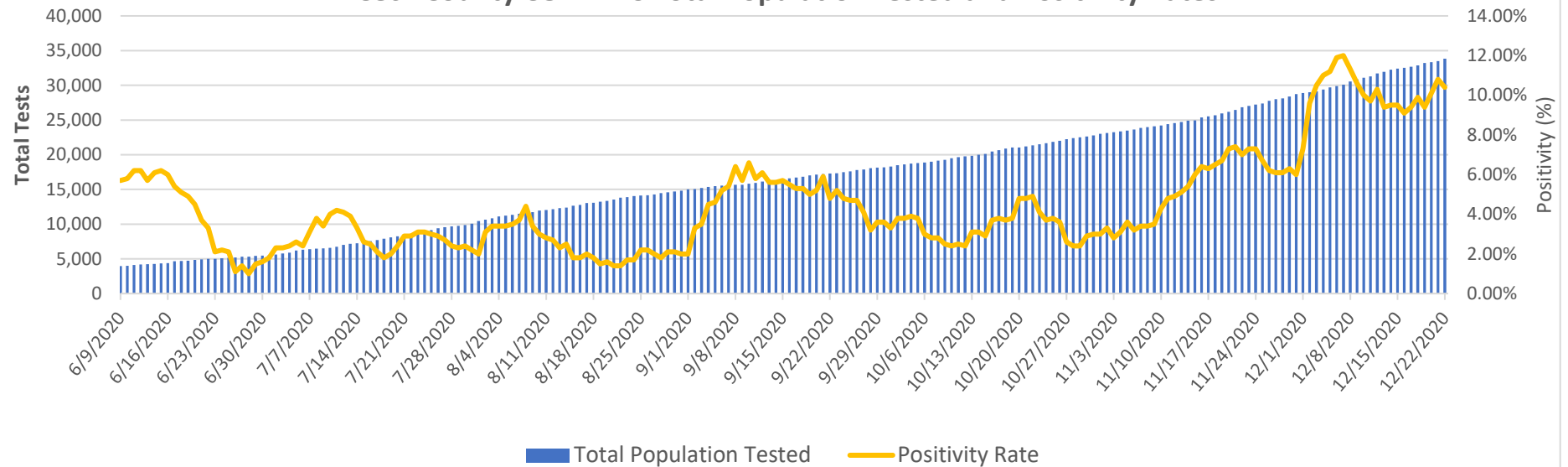


Zip codes	Cases
21901	447
21903	152
21904	160
21911	445
21912	61
21913	52
21915	85
21917	54
21918	99
21919	75
21921	1650
21914	13
21920	9
Unknown	49

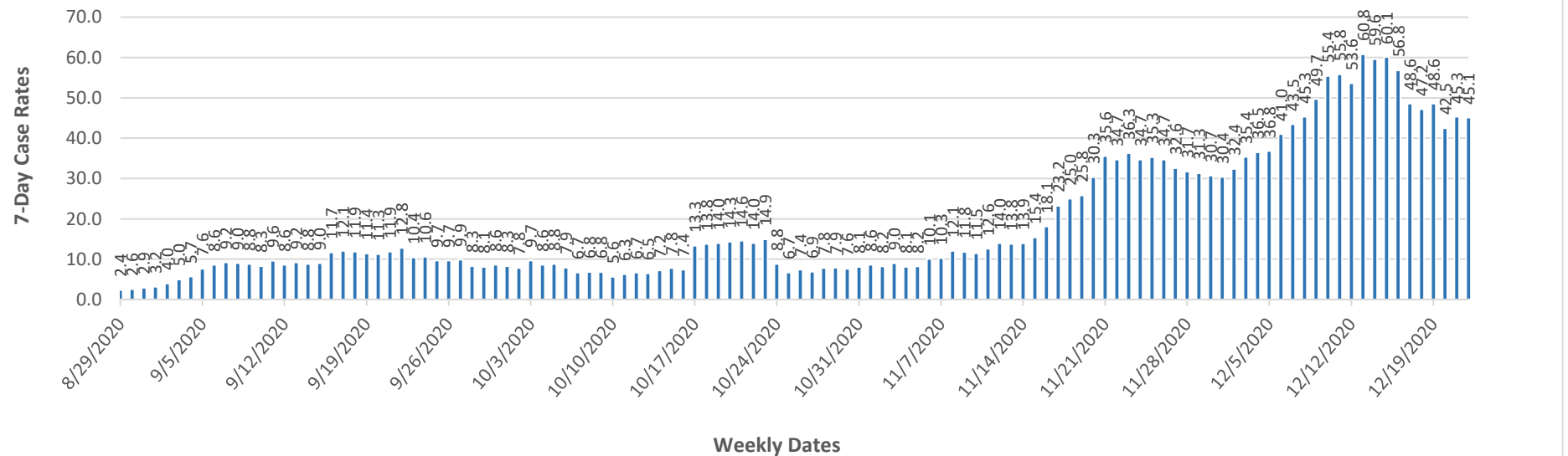
Zip codes with 7 or fewer cases are suppressed per MDH

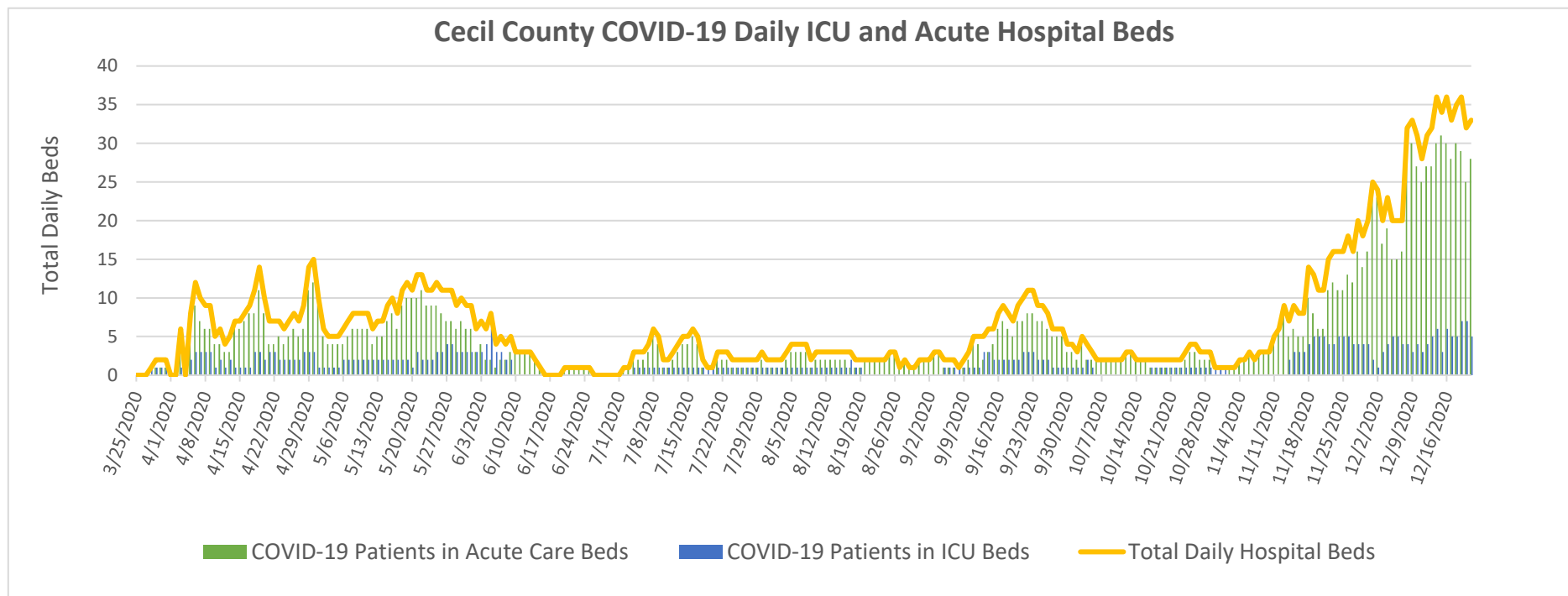


### Cecil County COVID-19 Total Population Tested and Positivity Rates



### Cecil County COVID-19 Seven-Day Case Rates





**Data sources:**

Cecil County Health Department COVID-19 Tracking Systems (CCHDC19TS)

Maryland Department of Health (MDH)

Maryland Department of Planning Services (MDPS)

Chesapeake Regional Information Systems for our Patients (CRISP)

Maryland Institute for Emergency Medical Services Systems (MIEMSS)

United States Census Bureau-American Community Survey

**Notes: Data in these charts show:**

Confirmed cases measured by positive test result and result date on the daily basis since March 21, 2020;

Deaths by the last activity date with a last status of close-deceased from COVID-19;

Total daily beds as sums of daily ICU & acute beds for Union Hospital-Cecil County only;

Hospitalization data as self-reported cases to MIEMSS that reflected point in time counts;

Zip codes with  $\leq 7$  cases are suppressed according to MDH;

Previous 4-week period: 11/24/20 - 12/22/20.

Jurisdiction - Cecil	# of Unique ELRs	Turn Around Time (days)	Turn Around Time (days)	Turn Around Time (days)
Reporting Facility		Median	25th Percentile	75th Percentile
MDPHL	52	3.0	2.0	3.0
UMMC Central Lab	59	2.0	1.0	2.0
GENETWORX	76	2.0	2.0	2.0
AHALABS	97	5.0	5.0	5.0
QUEST TETERBORO	106	3.0	3.0	4.0
GENETIC TECHNOLOGICAL INNOVATIONS	176	4.0	4.0	5.0
STS Lab 2 LLC	205	3.0	2.0	3.0
Cian Diagnostics	333	4.0	3.0	4.0
Mako Medical Laboratories	407	3.0	2.0	3.0
Curative DC	465	2.0	2.0	3.0
LABCORP	747	2.0	2.0	3.0
Total	3176	3.0	2.0	4.0

From ELRs received: 12/14/2020-12/20/2020

Total is summary of all tests/labs - not just the high volume labs.

Turn around time is the difference in reported date of collection and date reported to public health. Note that this includes time specimens that are held at a collecting location and transit time to the lab. Therefore, it is not solely a marker of capacity and response at a lab.