



HEALTHY people . HEALTHY community. HEALTHY future.

LAUREN LEVY, JD, MPH, HEALTH OFFICER

JOHN M. BYERS HEALTH CENTER

401 BOW ST., ELKTON, MD 21921

Tel.: 410-996-5550

www.cecilcountyhealth.org

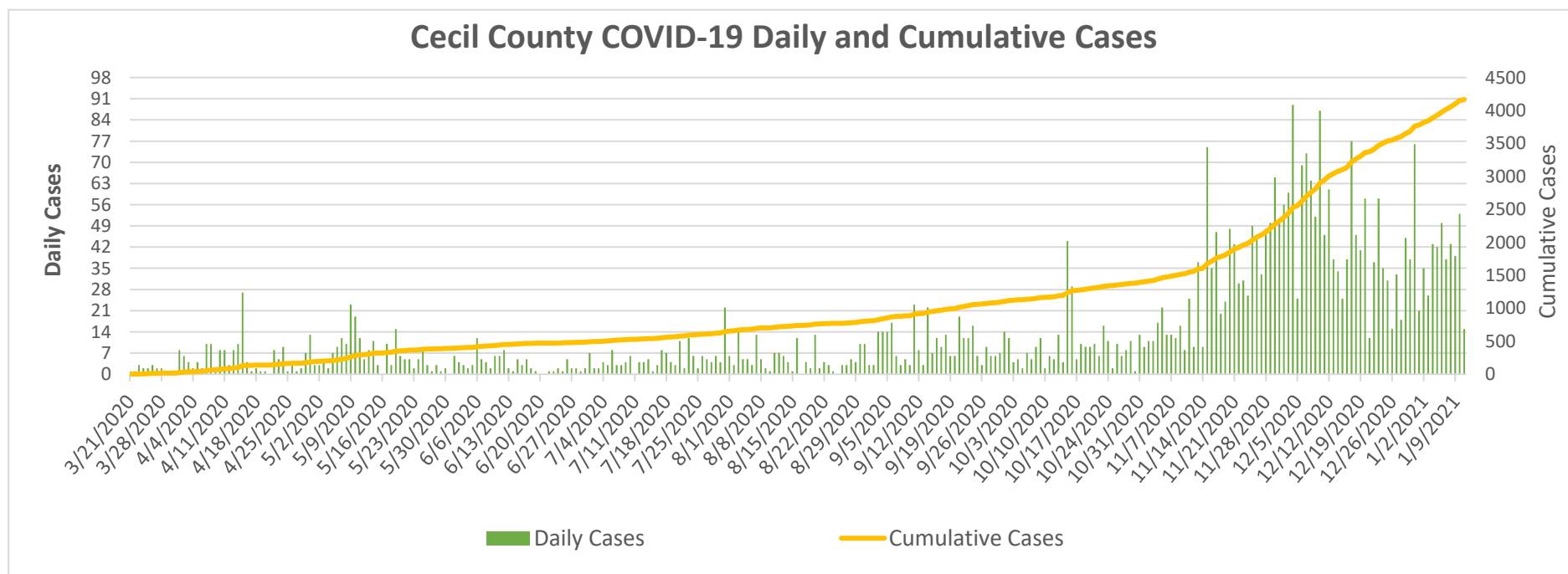
info@cecilcountyhealth.org

Cecil County COVID-19 Weekly Report

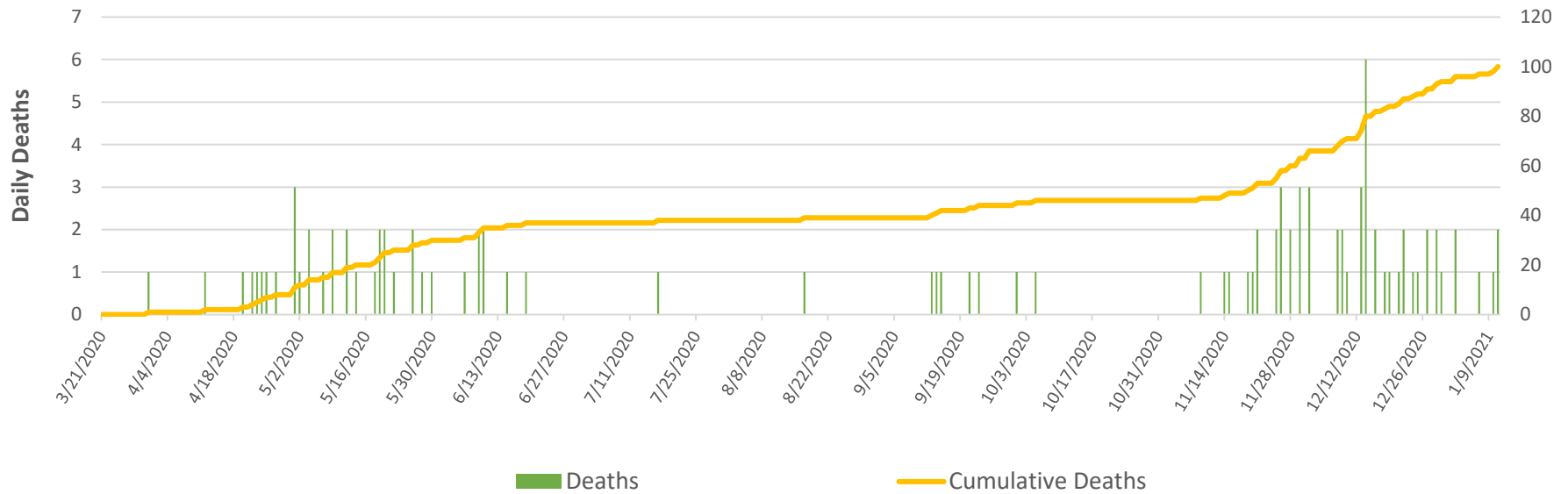
Number of Confirmed Cases	4,166
Number of Confirmed Deaths	100
Released from Isolation	3,492

Data as of:

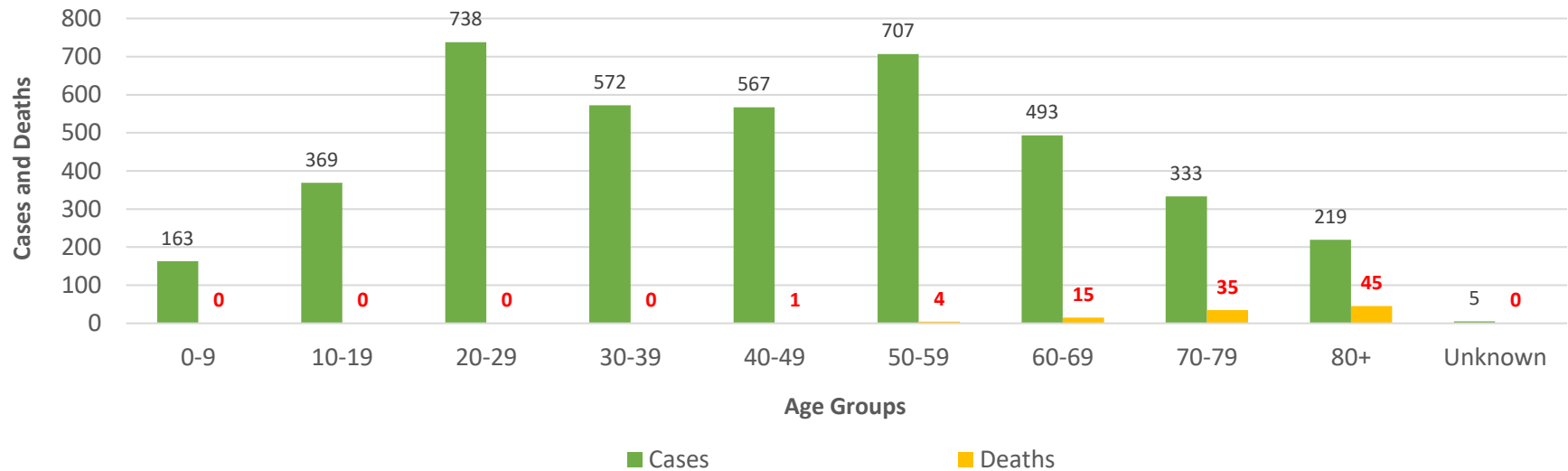
Tuesday, January 12, 2021



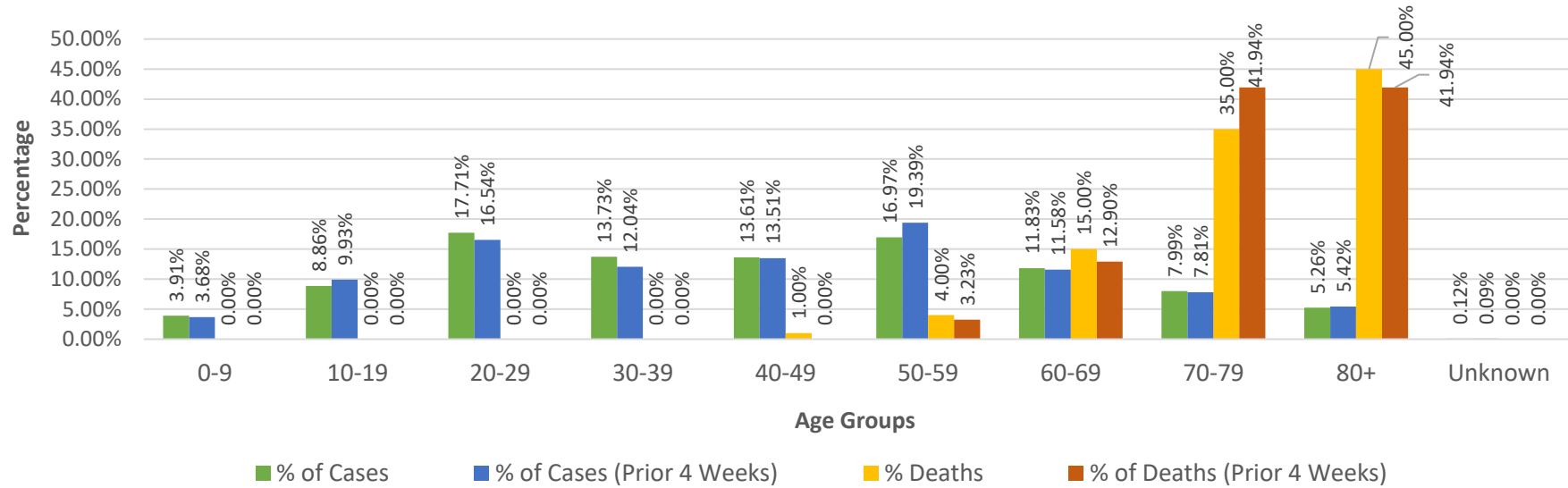
Cecil County COVID-19 Daily and Cumulative Deaths



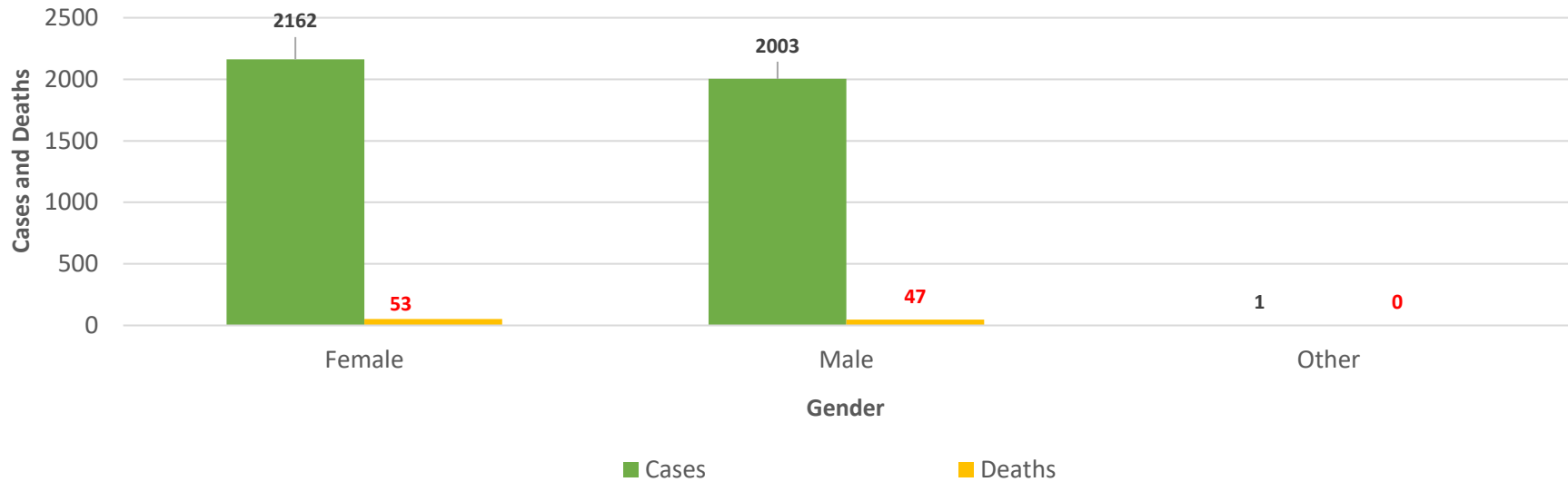
Cecil County COVID-19 Cases and Deaths by Age Groups



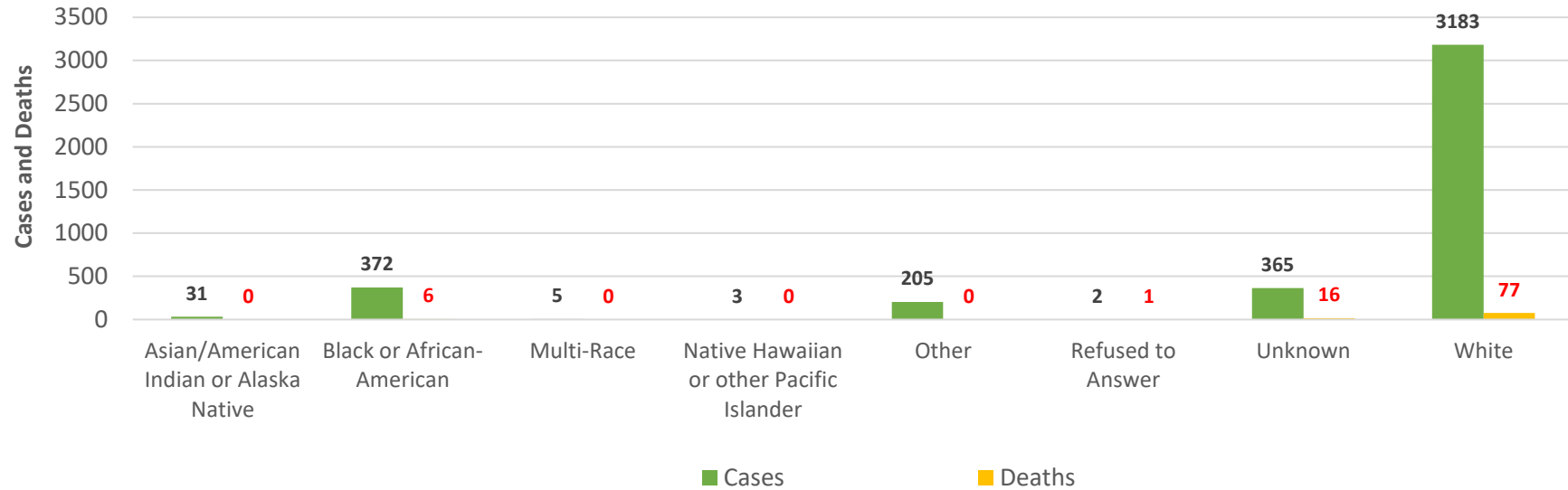
Cecil County COVID-19 Percentage of Cases and Deaths by Age Groups



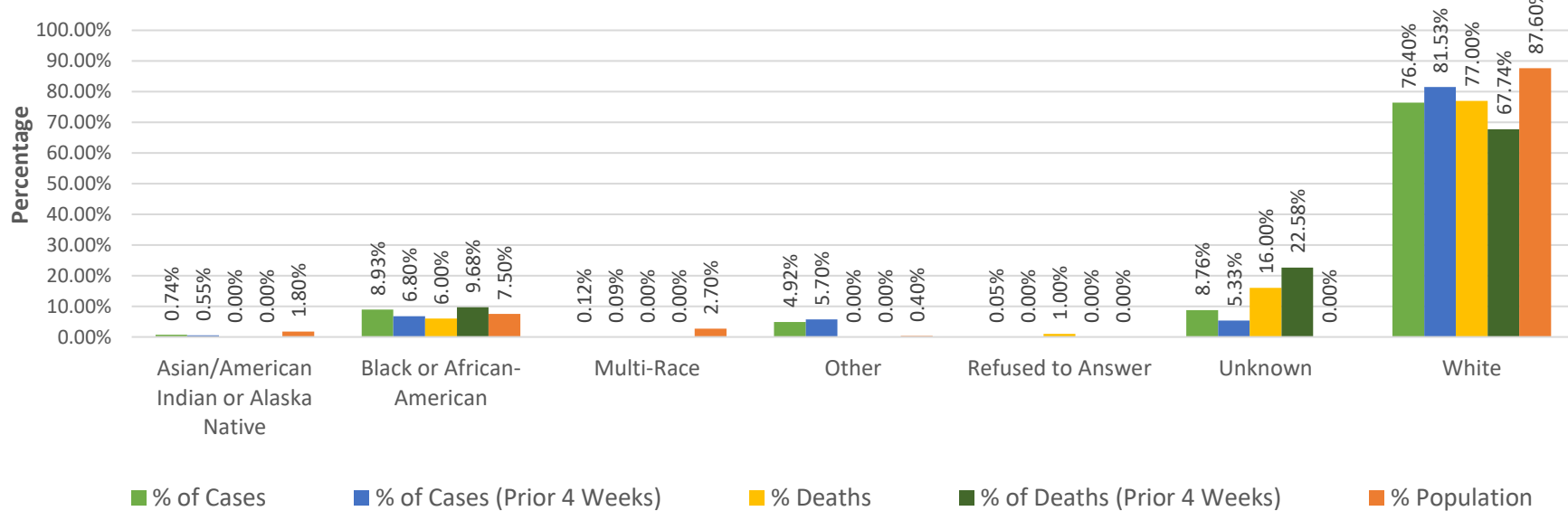
Cecil County COVID-19 Cases and Deaths by Gender



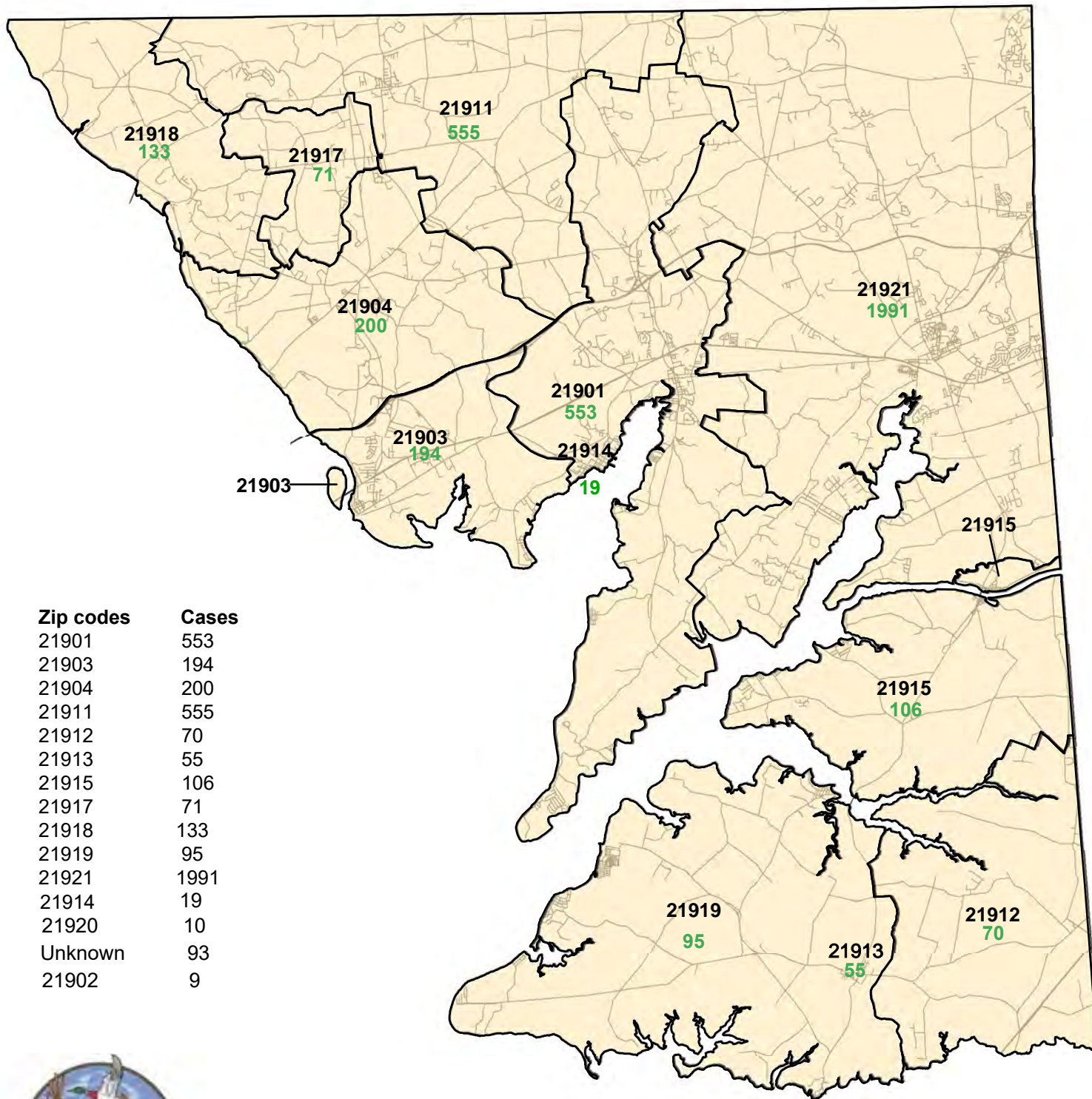
Cecil County COVID-19 Cases and Deaths by Race



Cecil County COVID-19 Percentage of Cases and Deaths by Race



Cecil County COVID-19 Cases by Zip Codes as of 1/12/2021



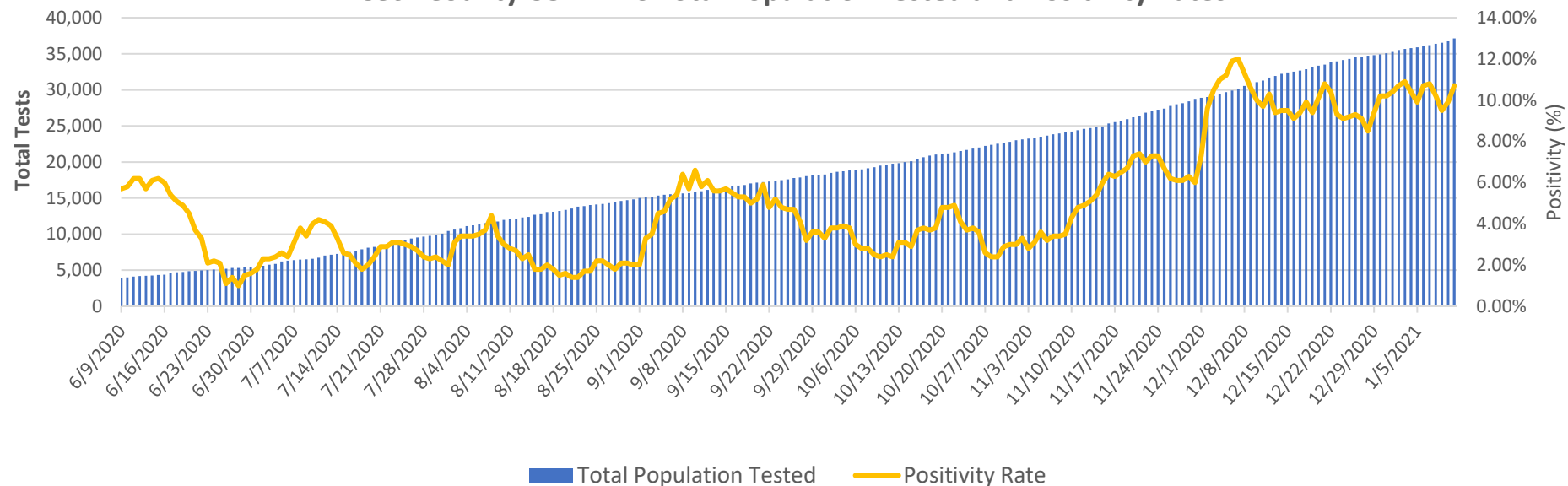
Zip codes	Cases
21901	553
21903	194
21904	200
21911	555
21912	70
21913	55
21915	106
21917	71
21918	133
21919	95
21921	1991
21914	19
21920	10
Unknown	93
21902	9



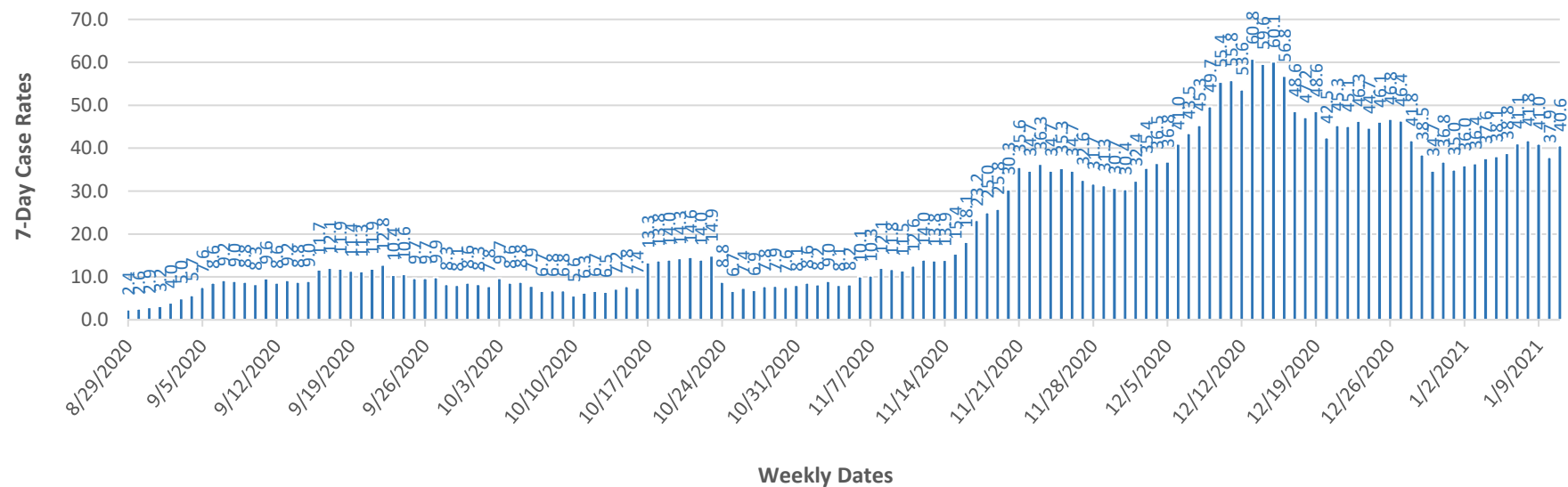
PREPARED BY THE MARYLAND DEPARTMENT OF PLANNING
PLANNING SERVICES DIVISION

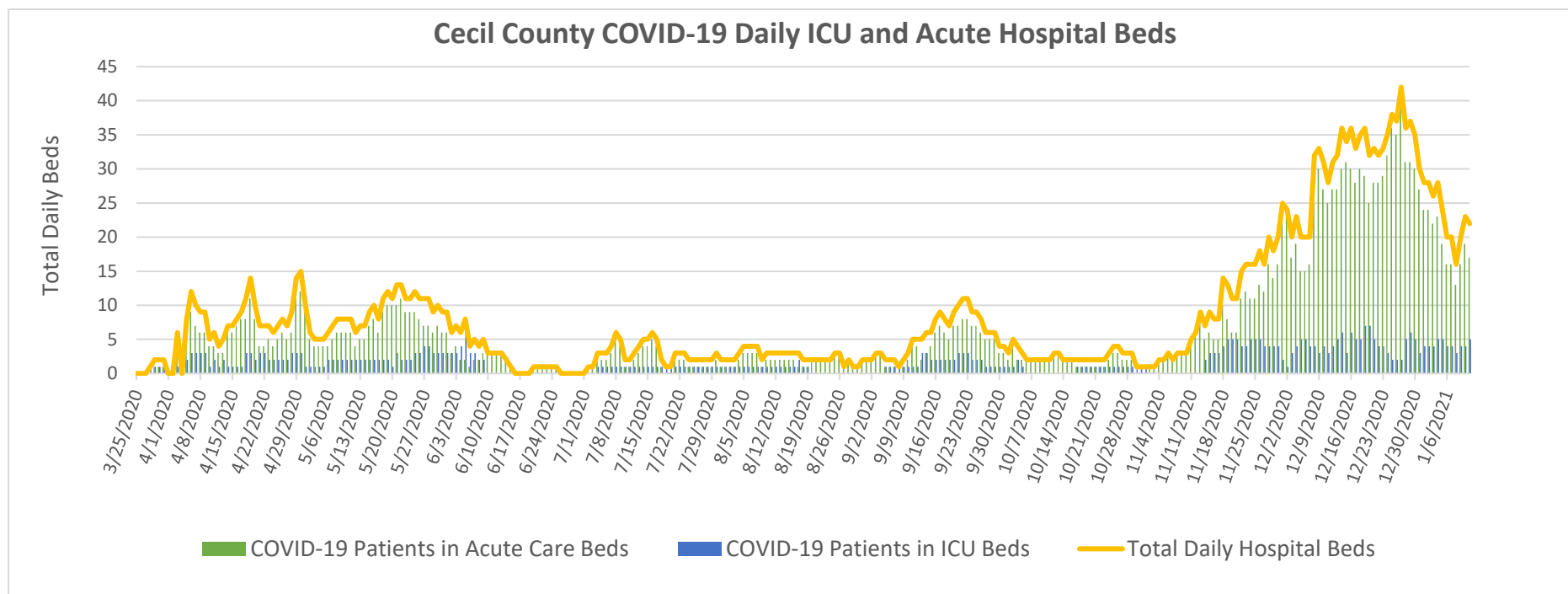


Cecil County COVID-19 Total Population Tested and Positivity Rates



Cecil County COVID-19 Seven-Day Case Rates





Data sources:

Cecil County Health Department COVID-19 Tracking Systems (CCHDC19TS)

Maryland Department of Health (MDH)

Maryland Department of Planning Services (MDPS)

Chesapeake Regional Information Systems for our Patients (CRISP)

Maryland Institute for Emergency Medical Services Systems (MIEMSS)

United States Census Bureau-American Community Survey

Notes: Data in these charts show:

Confirmed cases measured by positive test result and result date on the daily basis since March 21, 2020;

Confirmed deaths by a last status of close-deceased and death date from COVID-19;

Total daily beds as sums of daily ICU & acute beds for Union Hospital-Cecil County only;

Hospitalization data as self-reported cases to MIEMSS that reflected point in time counts;

Zip codes with ≤ 7 cases are suppressed according to MDH;

Previous 4-week period: 12/15/20 - 1/12/21.

Jurisdiction - Cecil	# of Unique ELRs	Turn Around Time (days)	Turn Around Time (days)	Turn Around Time (days)
Reporting Facility		Median	25th Percentile	75th Percentile
UMMC Central Lab	88	1.0	1.0	1.0
MDPHL	95	2.0	2.0	2.0
GENETWORX	104	2.0	2.0	2.0
QUEST TETERBORO	157	3.0	2.0	3.0
GENETIC TECHNOLOGICAL INNOVATIONS	170	8.0	7.0	9.0
Cian Diagnostics	220	3.0	3.0	3.0
STS Lab 2 LLC	236	3.0	2.0	3.0
Curative DC	499	2.0	2.0	3.0
Mako Medical Laboratories	550	3.0	2.0	4.0
LABCORP	766	3.0	2.0	3.0
Total	3496	3.0	2.0	3.0

From ELRs received: 1/4/2021-1/10/2021

Total is summary of all tests/labs - not just the high volume labs.

Turn around time is the difference in reported date of collection and date reported to public health. Note that this includes time specimens that are held at a collecting location and transit time to the lab. Therefore, it is not solely a marker of capacity and response at a lab.