



HEALTHY *people* . HEALTHY *community*. HEALTHY *future*.

**LAUREN LEVY, JD, MPH, HEALTH OFFICER**

JOHN M. BYERS HEALTH CENTER

401 BOW ST., ELKTON, MD 21921

Tel.: 410-996-5550

[www.cecilcountyhealth.org](http://www.cecilcountyhealth.org)

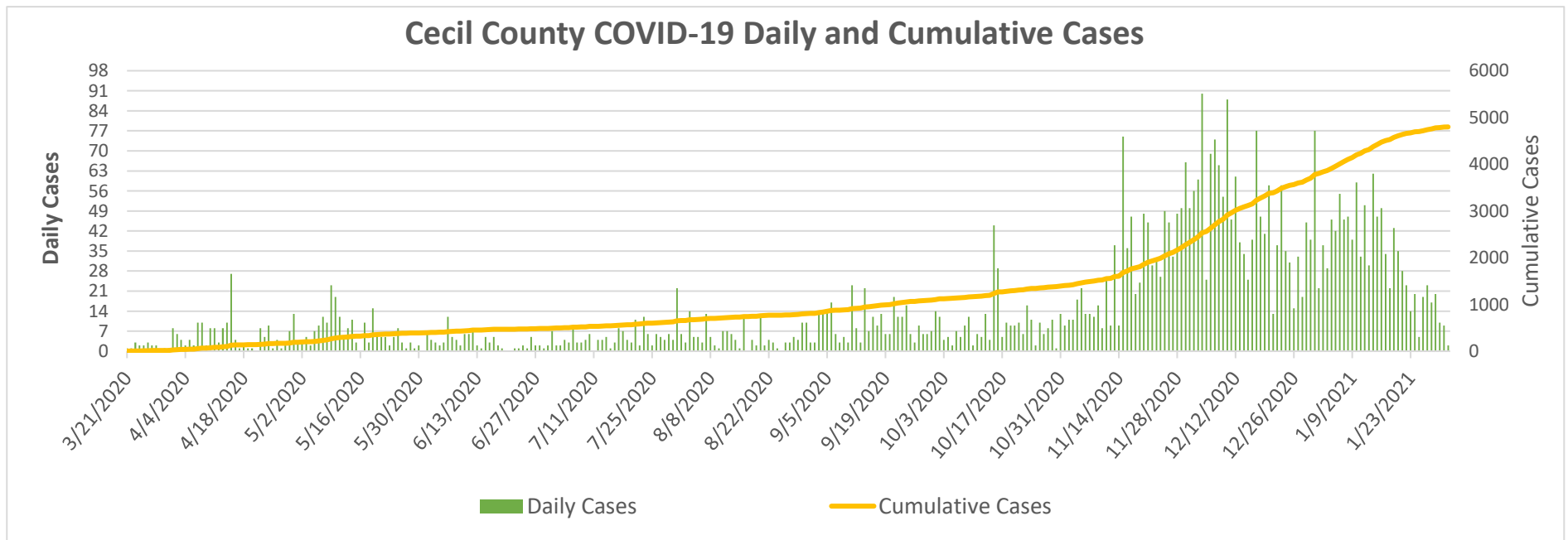
[info@cecilcountyhealth.org](mailto:info@cecilcountyhealth.org)

## Cecil County COVID-19 Weekly Report

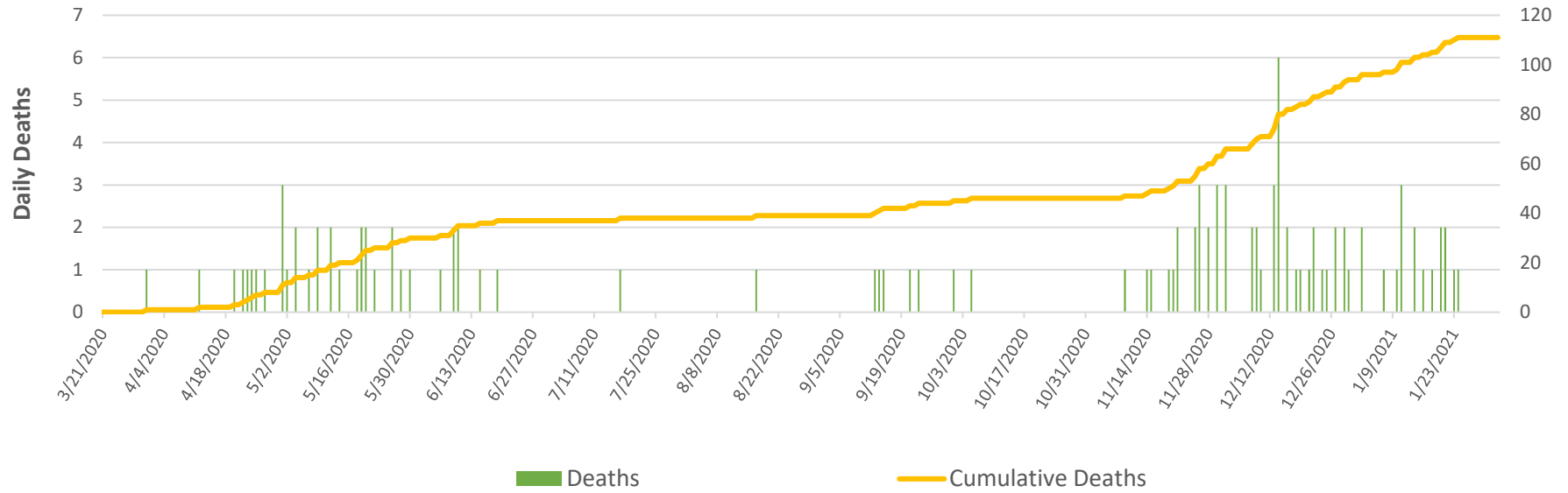
<b>Number of Confirmed Cases</b>	<b>4,798</b>
<b>Number of Confirmed Deaths</b>	<b>111</b>
<b>Released from Isolation</b>	<b>4,314</b>

Data as of:

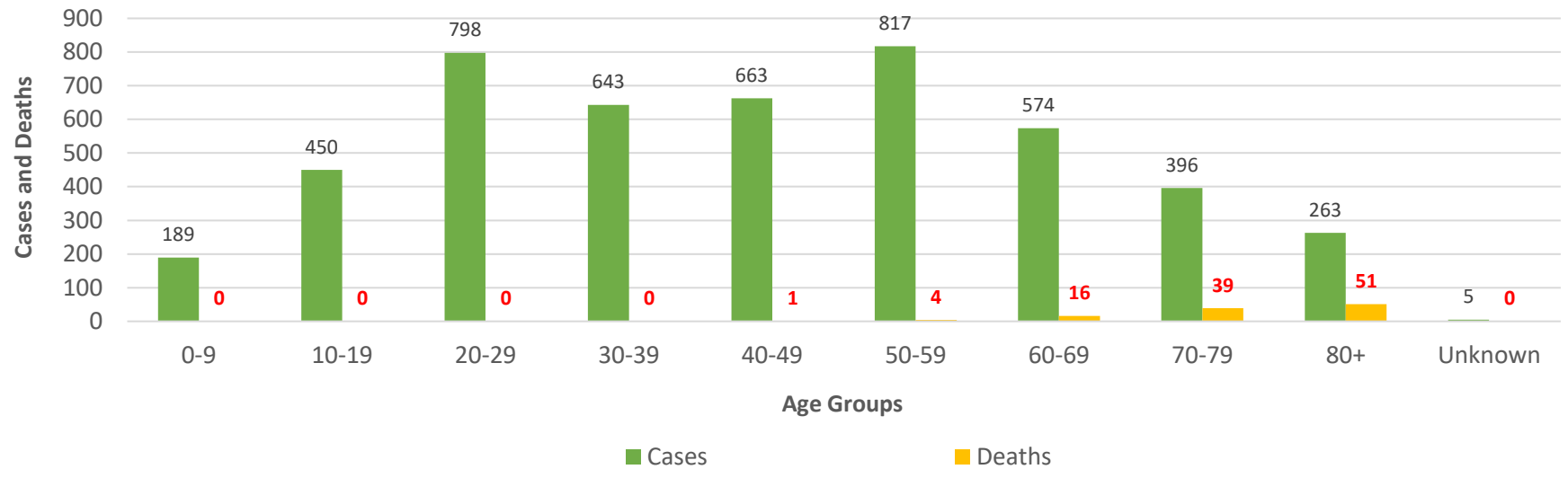
Tuesday, February 2, 2021



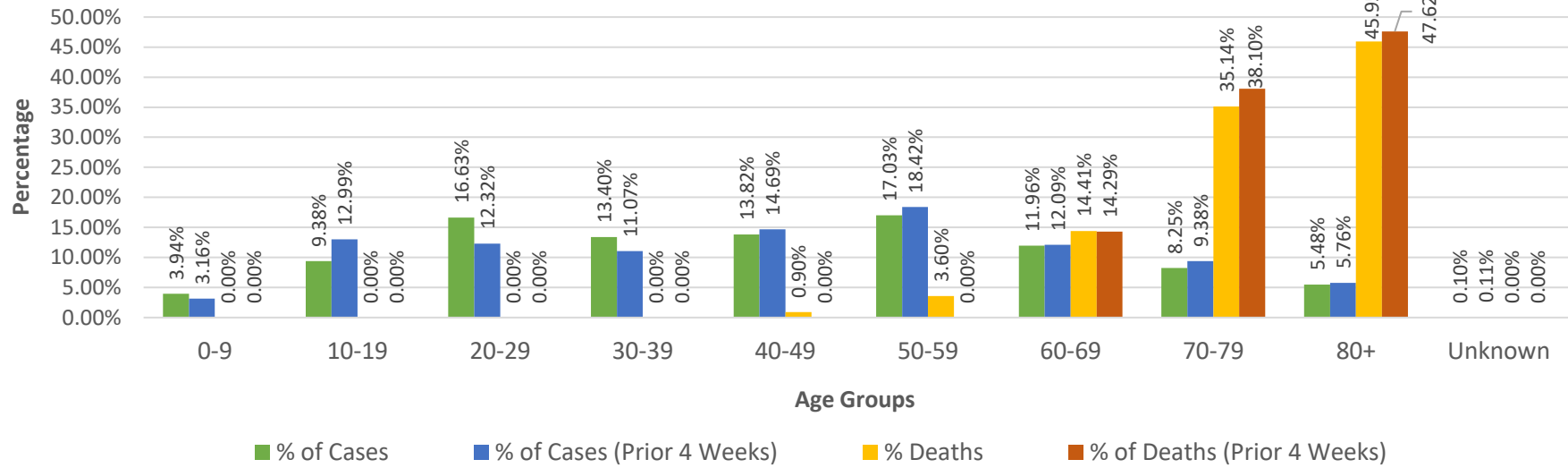
### Cecil County COVID-19 Daily and Cumulative Deaths



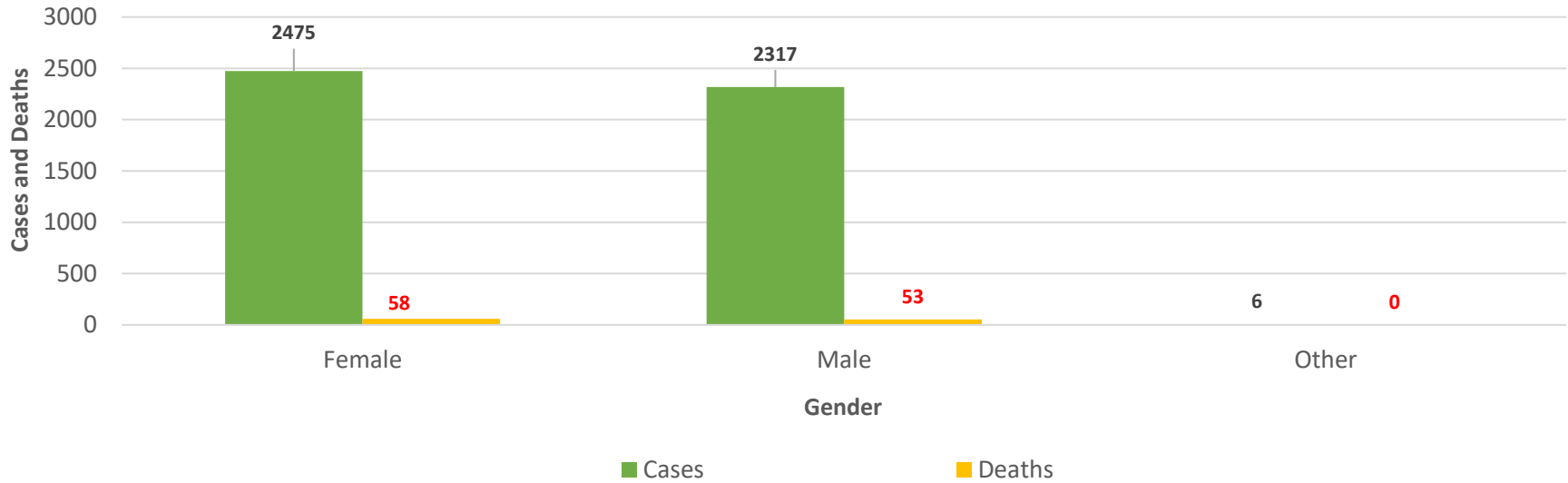
### Cecil County COVID-19 Cases and Deaths by Age Groups



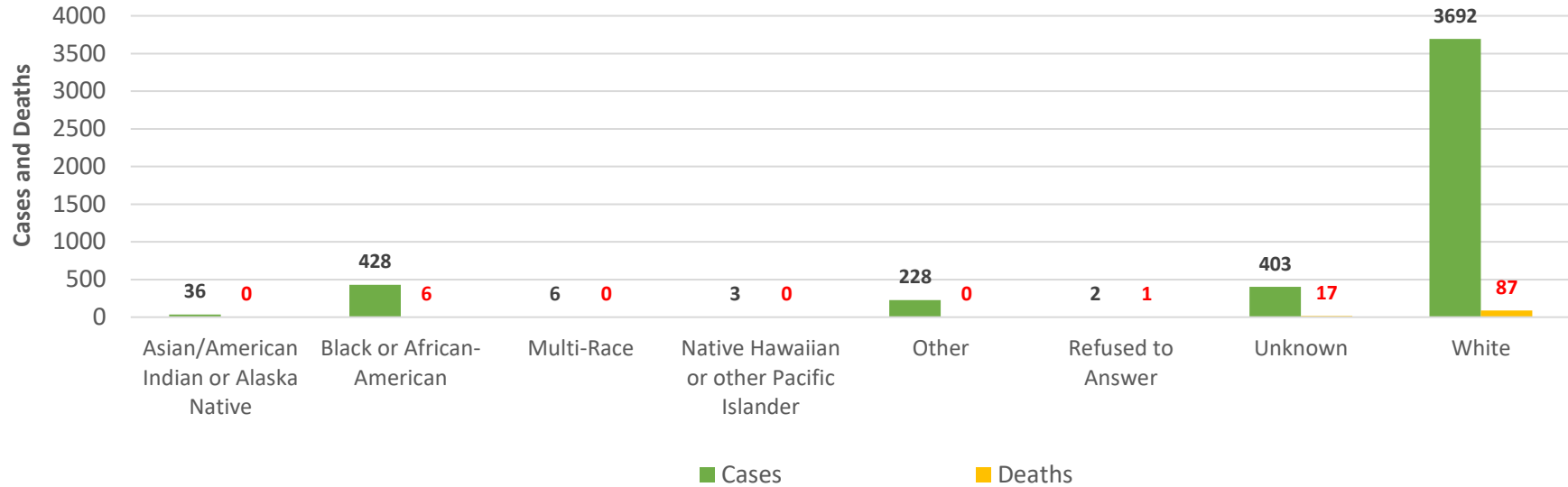
### Cecil County COVID-19 Percentage of Cases and Deaths by Age Groups



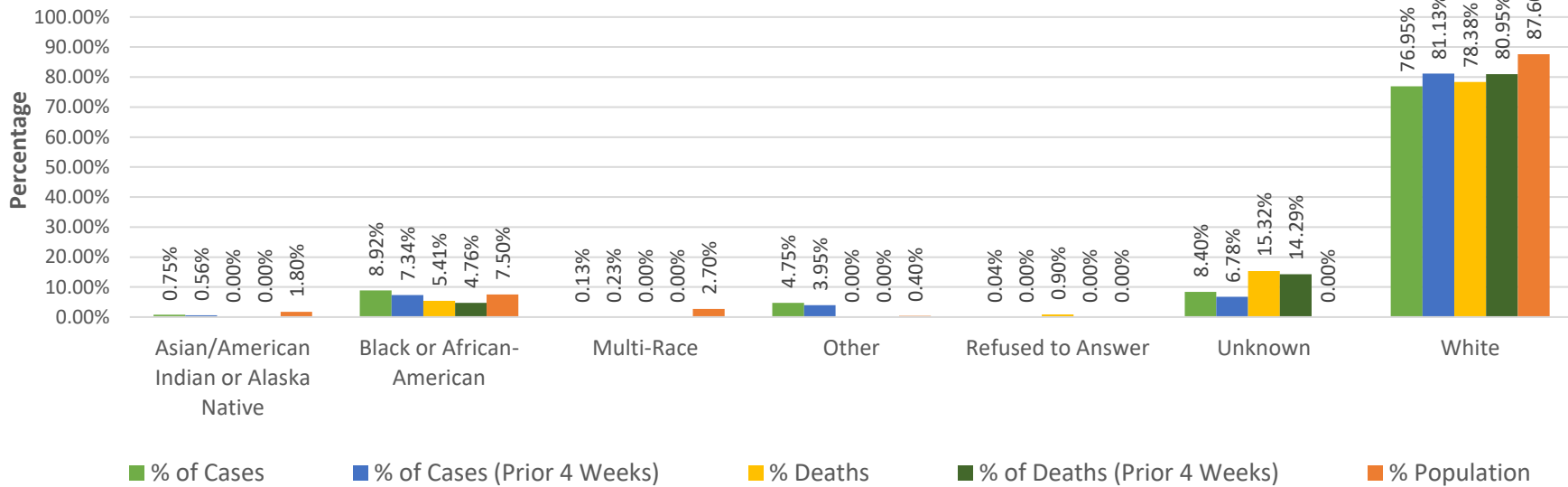
### Cecil County COVID-19 Cases and Deaths by Gender



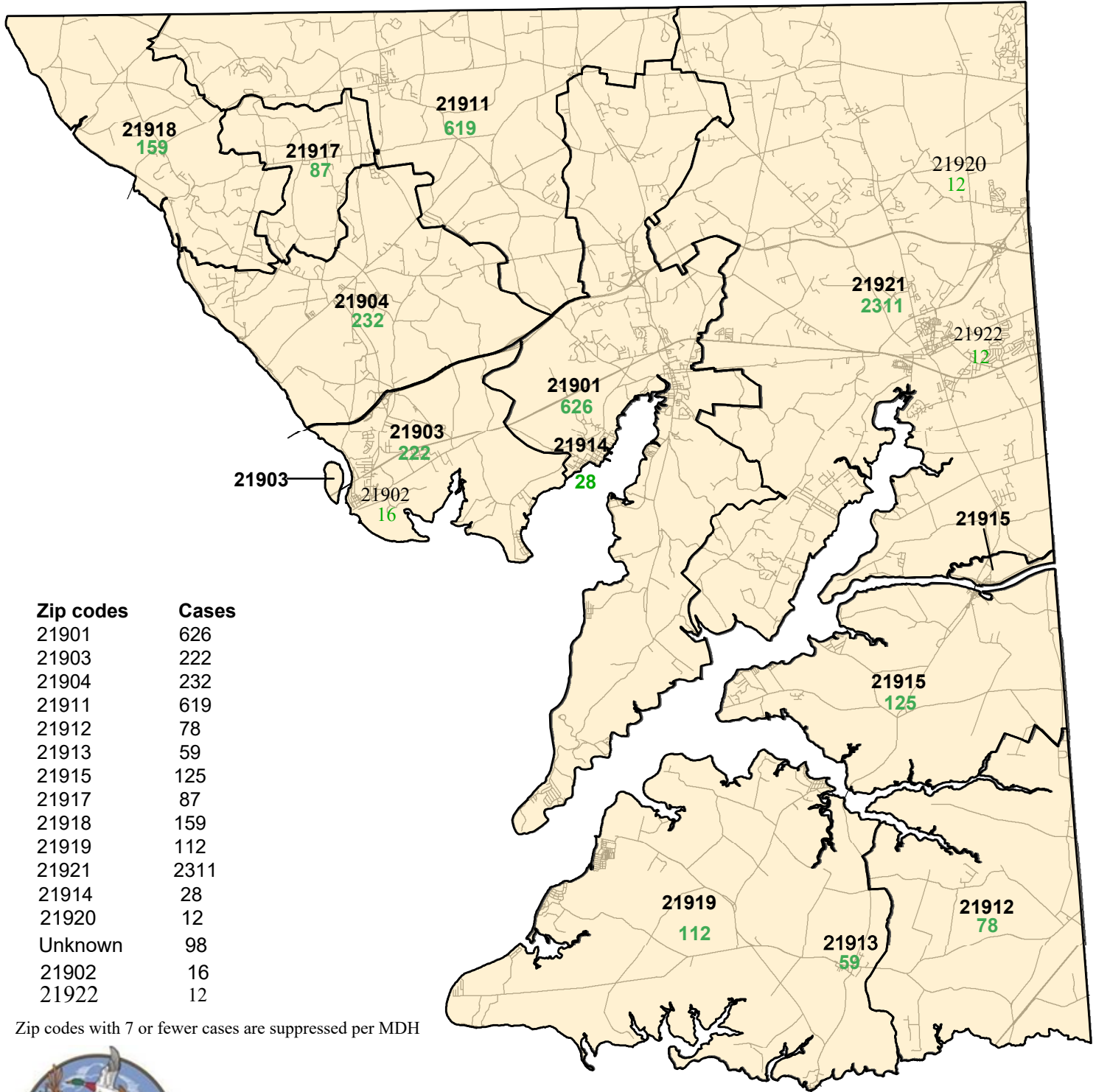
### Cecil County COVID-19 Cases and Deaths by Race



### Cecil County COVID-19 Percentage of Cases and Deaths by Race



# Cecil County COVID-19 Cases by Zip Codes as of 02/02/2021



Zip codes with 7 or fewer cases are suppressed per MDH



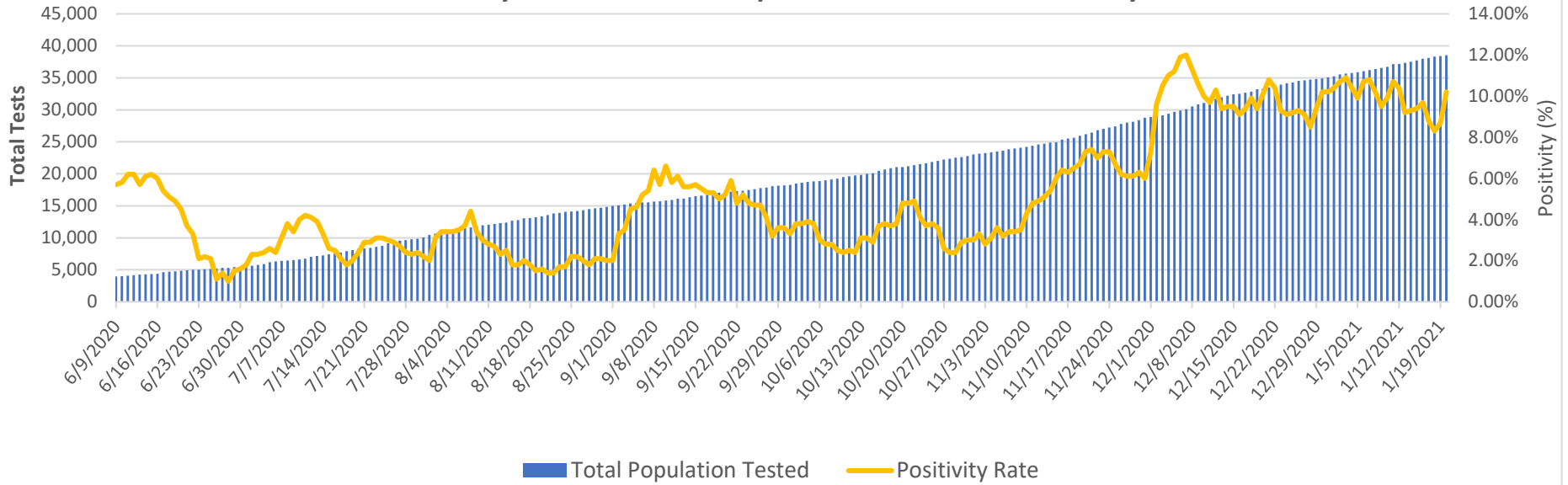
MARYLAND DEPARTMENT OF



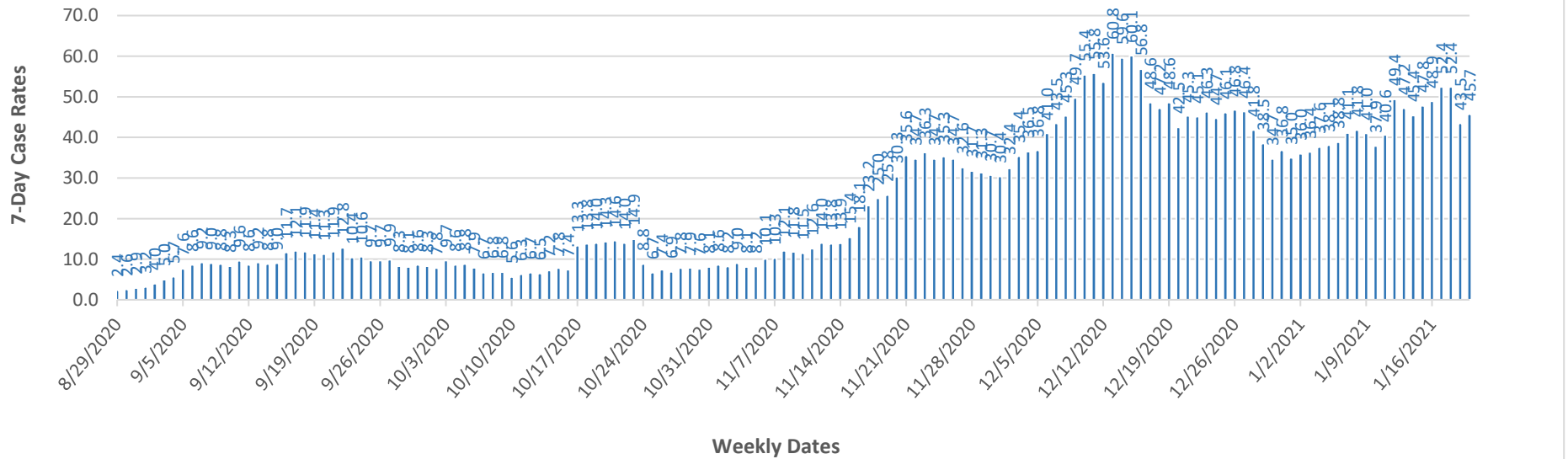
PREPARED BY THE MARYLAND DEPARTMENT OF PLANNING  
PLANNING SERVICES DIVISION

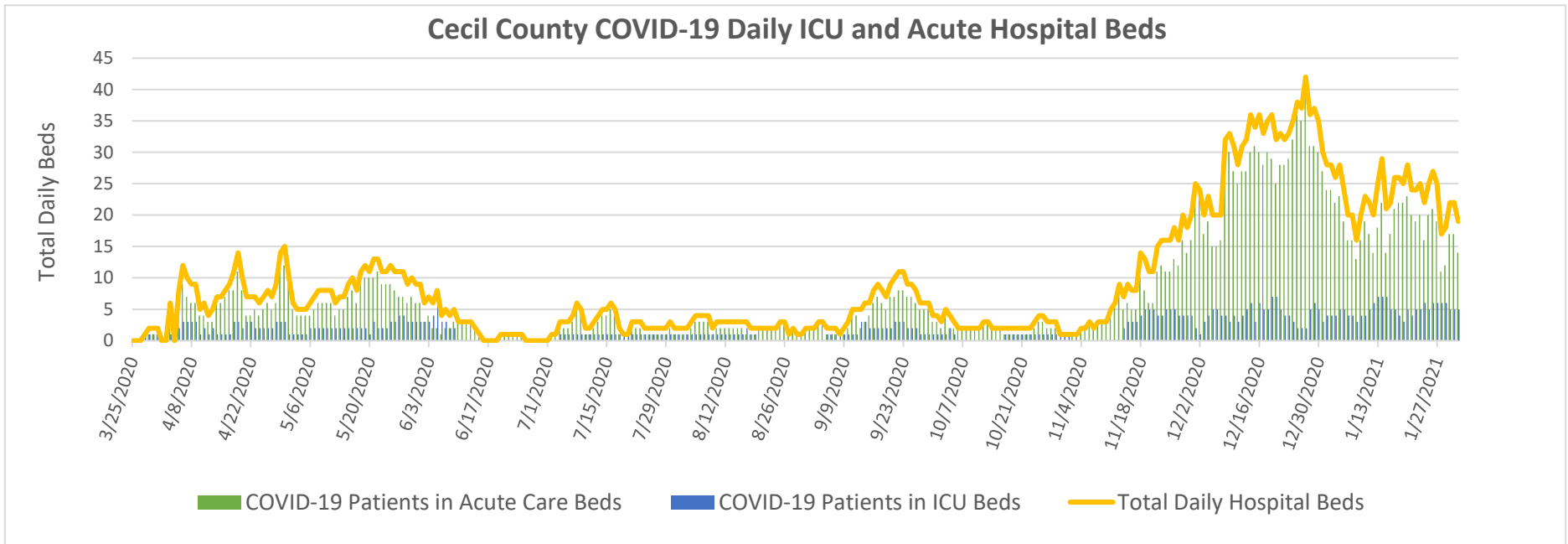


### Cecil County COVID-19 Total Population Tested and Positivity Rates



### Cecil County COVID-19 Seven-Day Case Rates





**Data sources:**

- Cecil County Health Department COVID-19 Tracking Systems (CCHDC19TS)
- Maryland Department of Health (MDH)
- Maryland Department of Planning Services (MDPS)
- Chesapeake Regional Information Systems for our Patients (CRISP)
- Maryland Institute for Emergency Medical Services Systems (MIEMSS)
- United States Census Bureau-American Community Survey

**Notes: Data in these charts show:**

- Confirmed cases measured by positive test result and result date on the daily basis since March 21, 2020;
- Confirmed deaths by a last status of close-deceased and death date from COVID-19;
- Total daily beds as sums of daily ICU & acute beds for Union Hospital-Cecil County only;
- Hospitalization data as self-reported cases to MIEMSS that reflected point in time counts;
- Zip codes with  $\leq 7$  cases are suppressed according to MDH;
- Previous 4-week period: 1/5/21- 2/2/21; COVID-19 testing data as of 01/20/21.

Jurisdiction - Cecil	# of Unique ELRs	Turn Around Time (days)	Turn Around Time (days)	Turn Around Time (days)
Reporting Facility		Median	25th Percentile	75th Percentile
UNIVERSITY OF MD PATH ASSOC - MD GENOMICS	101	2.0	2.0	2.0
MDPHL	108	2.0	2.0	2.0
QUEST TETERBORO	108	2.0	2.0	2.0
GENETIC TECHNOLOGICAL INNOVATIONS	113	4.0	4.0	5.0
GENETWORX	144	2.0	1.0	2.0
STS Lab 2 LLC	201	3.0	2.0	3.0
Cian Diagnostics	274	1.0	1.0	2.0
Mako Medical Laboratories	285	2.0	2.0	2.0
Curative DC	317	1.0	1.0	2.0
LABCORP	548	2.0	2.0	3.0
Total	2850	2.0	2.0	3.0

From ELRs received: 1/25/2021-1/31/2021

Total is summary of all tests/labs - not just the high volume labs.

Turn around time is the difference in reported date of collection and date reported to public health. Note that this includes time specimens that are held at a collecting location and transit time to the lab. Therefore, it is not solely a marker of capacity and response at a lab.