



HEALTHY people. HEALTHY community. HEALTHY future.

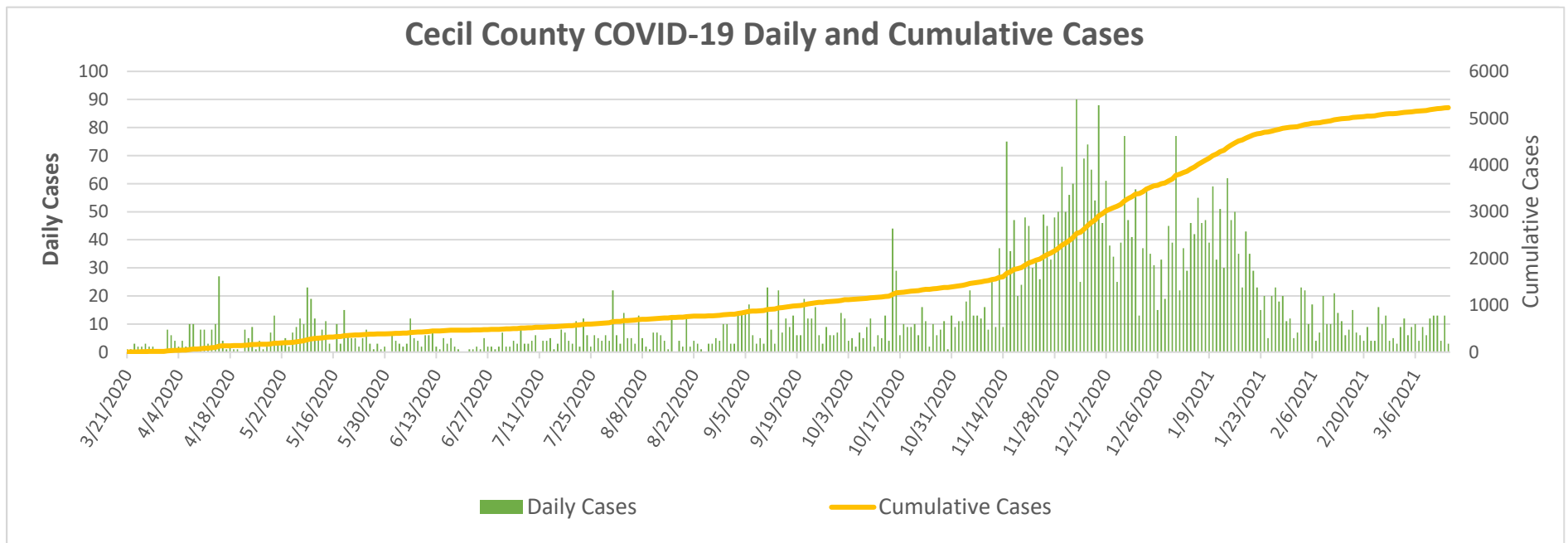
LAUREN LEVY, JD, MPH, HEALTH OFFICER
 JOHN M. BYERS HEALTH CENTER
 401 BOW ST., ELKTON, MD 21921
 Tel.: 410-996-5550
www.cecilcountyhealth.org
info@cecilcountyhealth.org

Cecil County COVID-19 Weekly Report

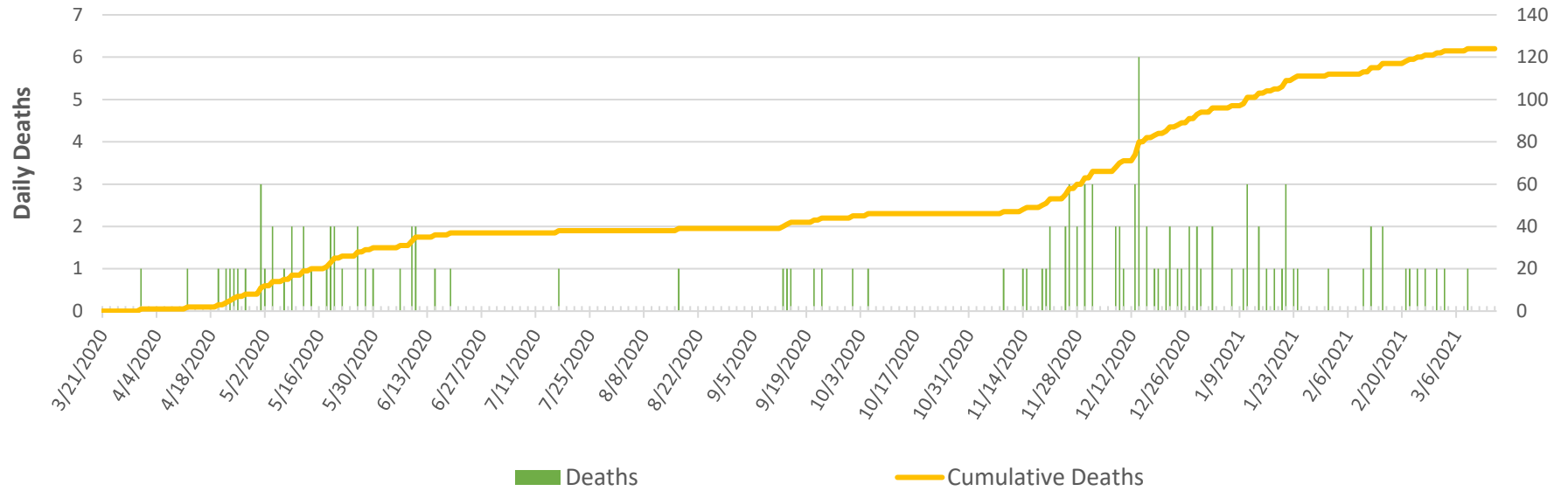
Number of Confirmed Cases	5,225
Number of Confirmed Deaths	124
Released from Isolation	4,732

Data as of:

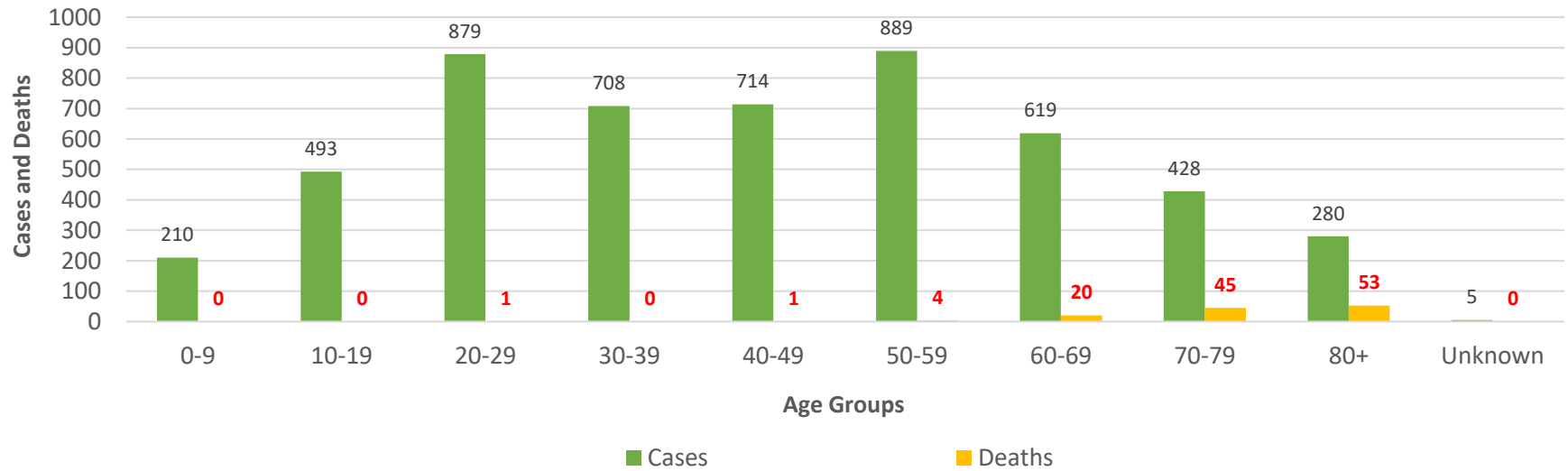
Tuesday, March 16, 2021



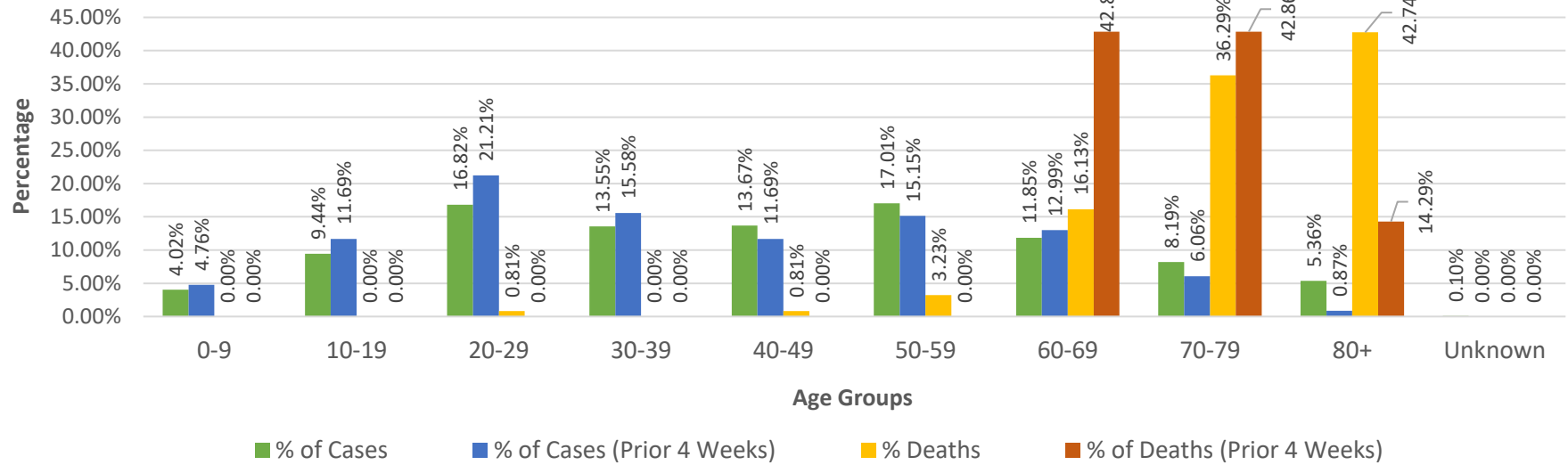
Cecil County COVID-19 Daily and Cumulative Deaths



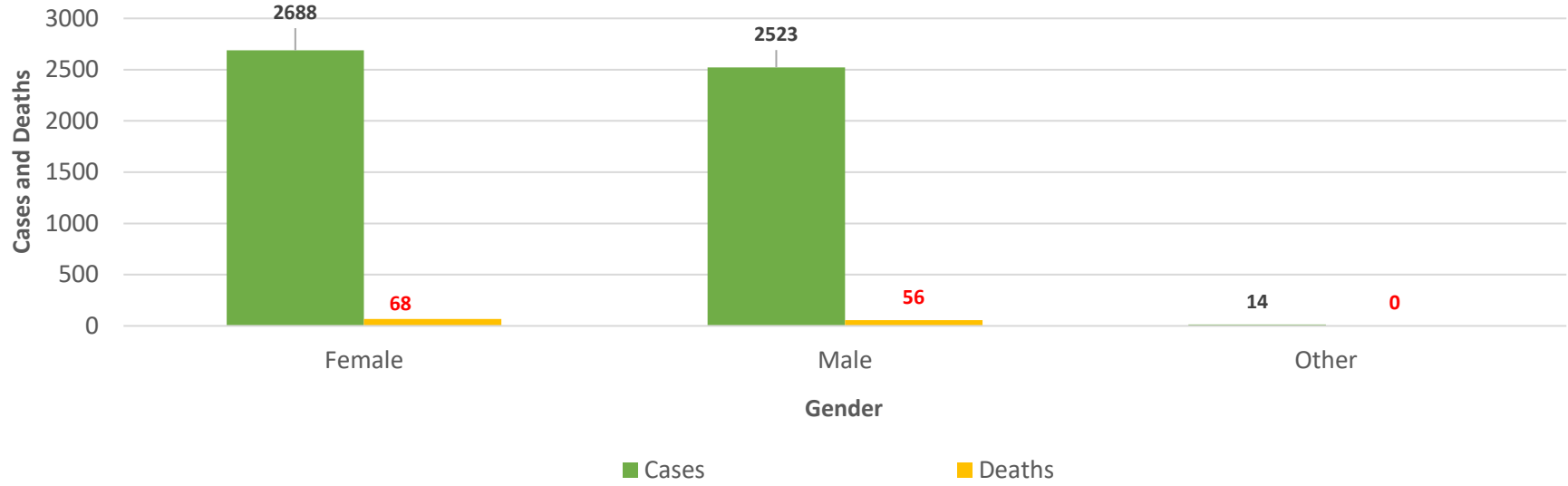
Cecil County COVID-19 Cases and Deaths by Age Groups



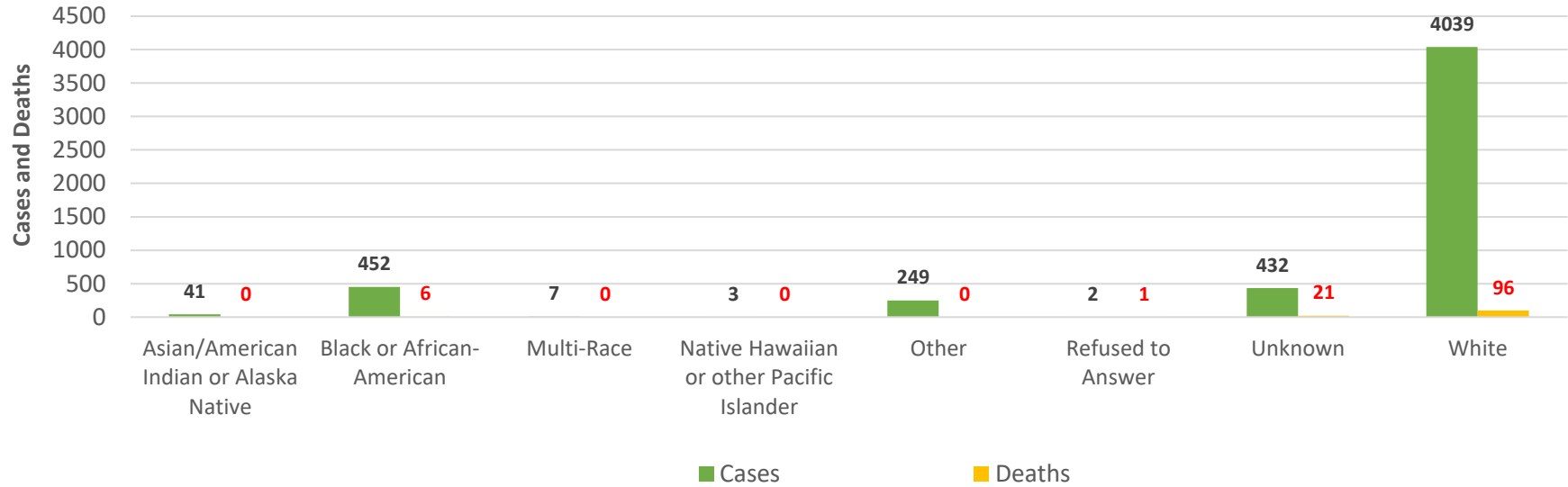
Cecil County COVID-19 Percentage of Cases and Deaths by Age Groups



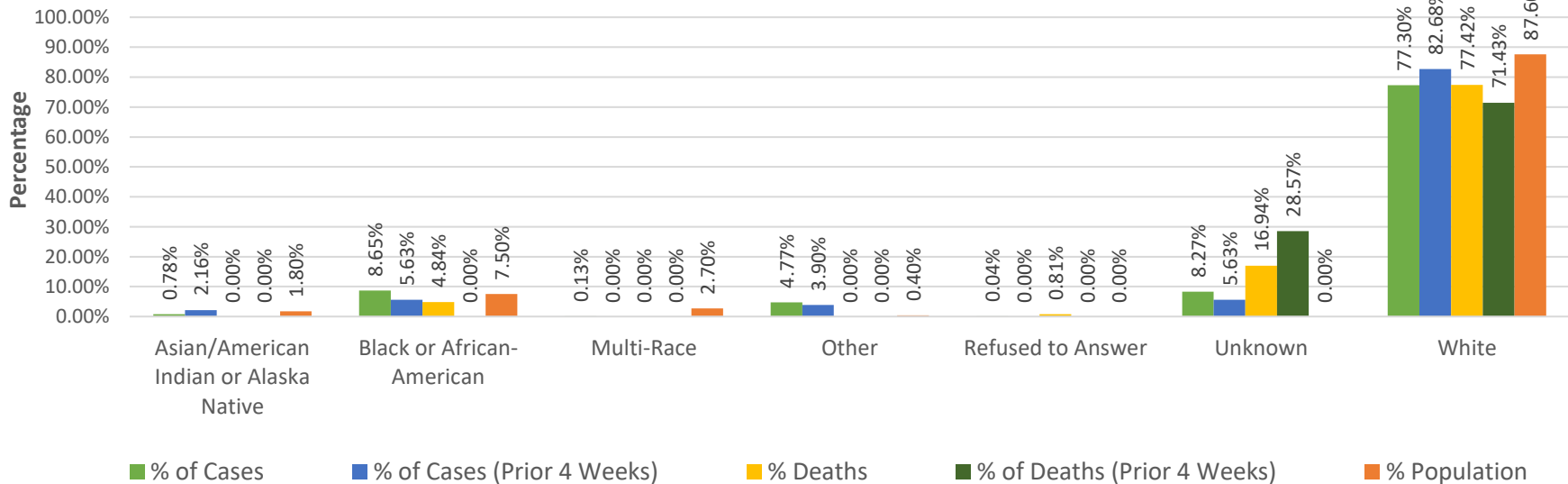
Cecil County COVID-19 Cases and Deaths by Gender



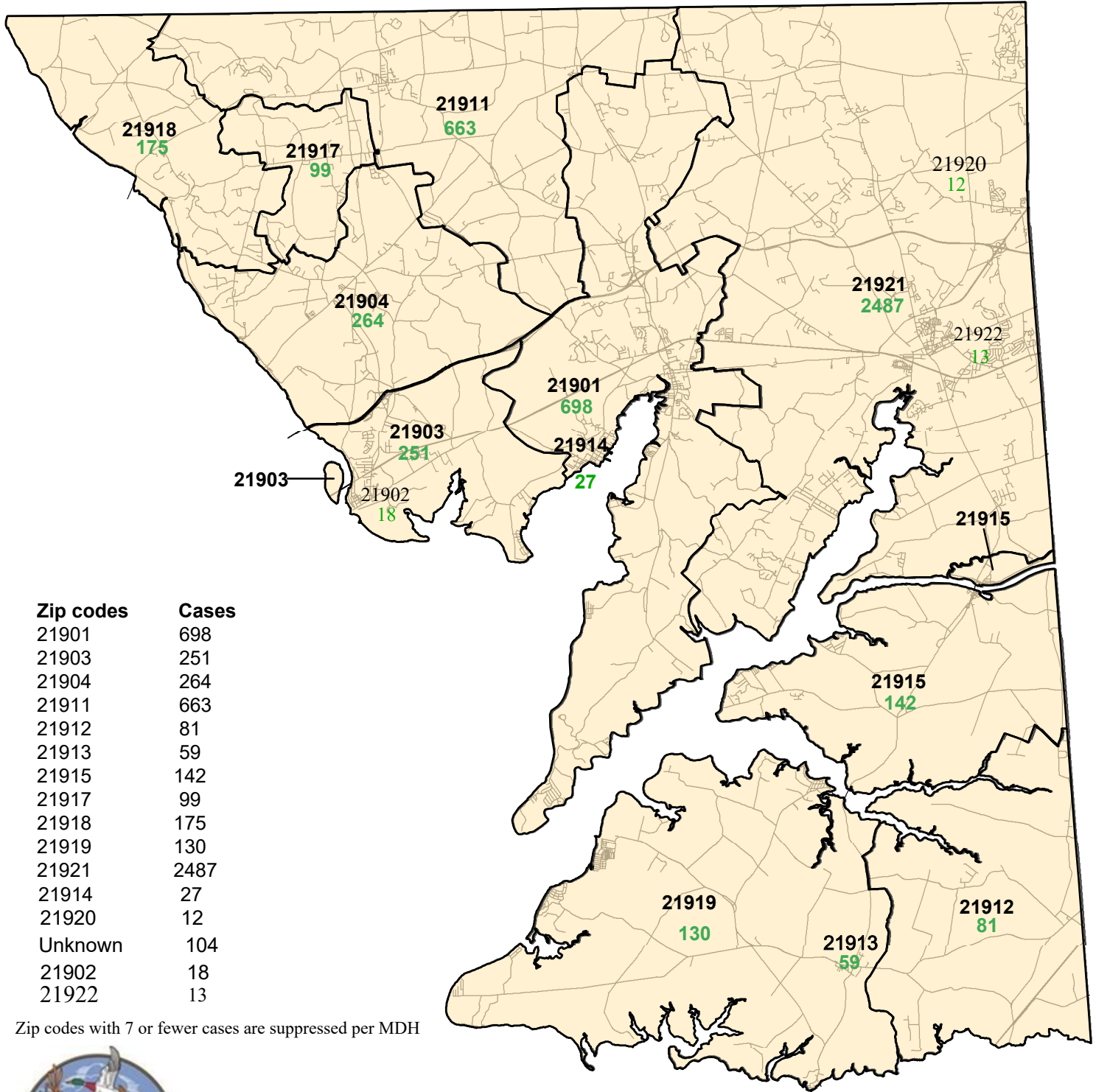
Cecil County COVID-19 Cases and Deaths by Race



Cecil County COVID-19 Percentage of Cases and Deaths by Race



Cecil County COVID-19 Cases by Zip Codes as of 03/16/2021



Zip codes with 7 or fewer cases are suppressed per MDH



MARYLAND DEPARTMENT OF



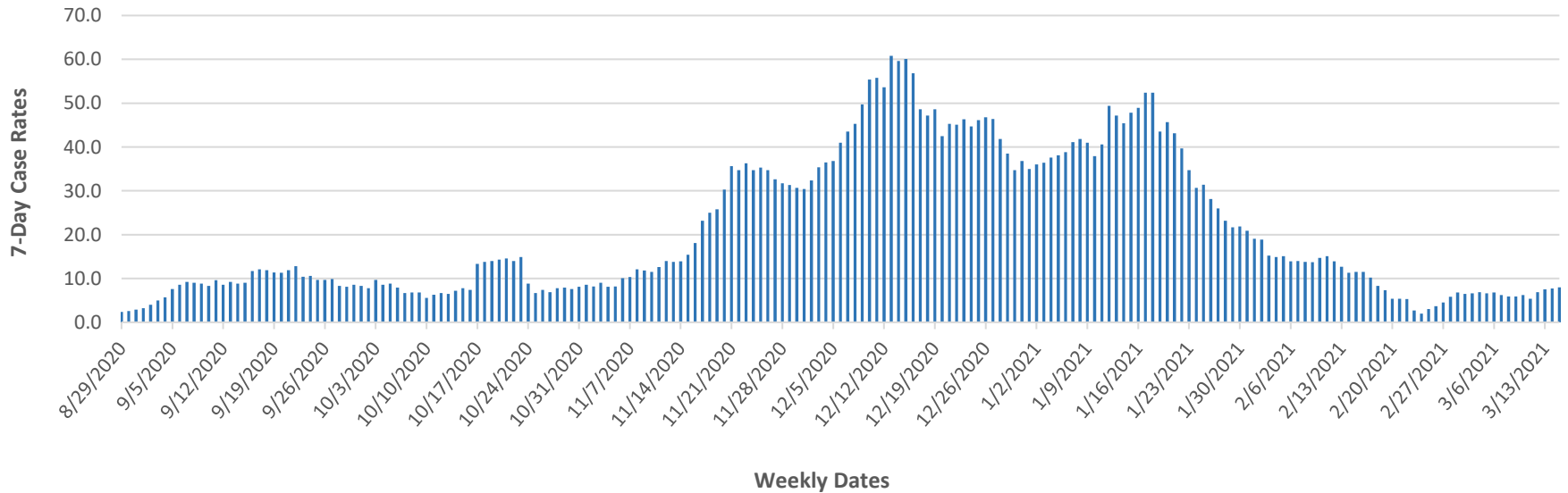
PREPARED BY THE MARYLAND DEPARTMENT OF PLANNING
PLANNING SERVICES DIVISION

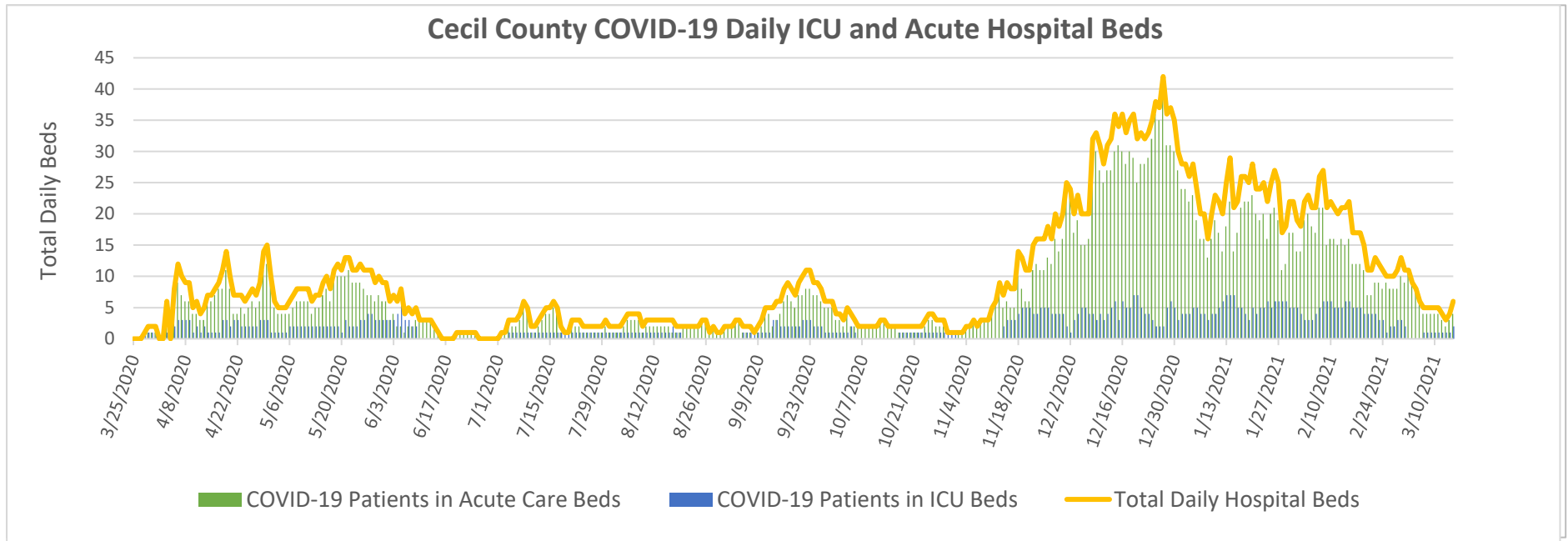


Cecil County COVID-19 Positivity Rates



Cecil County COVID-19 Seven-Day Case Rates





Data sources:

- Cecil County Health Department COVID-19 Tracking Systems (CCHDC19TS)
- Maryland Department of Health (MDH)
- Maryland Department of Planning Services (MDPS)
- Chesapeake Regional Information Systems for our Patients (CRISP)
- Maryland Institute for Emergency Medical Services Systems (MIEMSS)
- United States Census Bureau-American Community Survey

Notes: Data in these charts show:

- Confirmed cases measured by positive test result and result date on the daily basis since March 21, 2020;
- Confirmed deaths by a last status of close-deceased and death date from COVID-19;
- Total daily beds as sums of daily ICU & acute beds for Union Hospital-Cecil County only;
- Hospitalization data as self-reported cases to MIEMSS that reflected point in time counts;
- Zip codes with ≤ 7 cases are suppressed according to MDH;
- Previous 4-week period: 2/16/21- 3/16/21.

Jurisdiction - Cecil	# of Unique ELRs	Turn Around Time (days)	Turn Around Time (days)	Turn Around Time (days)
Reporting Facility		Median	25th Percentile	75th Percentile
QUEST TETERBORO	71	2.0	2.0	2.0
GENETWORX	72	1.0	1.0	1.0
MDPHL	75	2.0	2.0	3.0
GENETIC TECHNOLOGICAL INNOVATIONS	101	4.0	3.0	4.0
AVALON LABORATORY SOLUTIONS	112	1.0	1.0	1.0
AHALABS	117	4.0	4.0	5.0
STS Lab 2 LLC	180	2.0	2.0	3.0
Cian Diagnostics	239	2.0	2.0	2.0
Curative DC	256	1.0	1.0	2.0
LABCORP	298	2.0	2.0	2.0
Total	2149	2.0	2.0	3.0

From ELRs received: 3/8/2021-3/14/2021

Total is summary of all tests/labs - not just the high volume labs.

Turn around time is the difference in reported date of collection and date reported to public health. Note that this includes time specimens that are held at a collecting location and transit time to the lab. Therefore, it is not solely a marker of capacity and response at a lab.